

DIE CAST  
MACHINERY  
LLC

(847) 360-9170

*World Leader in Used Die Casting Machinery!*

HOME

RECENT  
ADDITIONS

INDUSTRY  
SERVICES

JOIN OUR  
MAILING LIST

SELL US  
YOUR MACHINE

If we can be of any assistance or if you have any questions,  
please don't hesitate to contact us at (847) 360-9170.

You may also visit our website at  
<https://www.diecastmachinery.com>

Thank you!

DIA 2000 SE - Analyses management system [ Quanton / Basic ]

FileEditViewFormatsExtrasBasic filesConfigurationHelp

Files

Print

Statistics

Export

Filter

View

Details

Login

Help

Home

Web

DIA 2000

Standard

<no Selection>

Start

↓ Date	↓ Time	SampleNo	Comments	Quality	Method	Si	Fe	Cu	Mn	Mg	Cr	Ni	Zn	Ti	Cd	Pb	Sn	Al	SF	
10/12/2016	12:47:20 PM	40915	INCOMINI KB 380 CH	AI100New	8.74	0.908	3.42	0.247	0.00599	0.0470	0.0739	1.46	0.0447	<0.00050	0.0595	0.0321	85.0			
10/12/2016	12:07:47 PM	IST-M---19 ---328	KB 380 CH	AI100New	8.68	0.931	3.32	0.251	0.0121	0.0506	0.0752	1.58	0.0465	0.00076	0.0620	0.0330	85.0			
10/12/2016	12:05:40 PM	IST-M---14 ---37778-07	KB 380 CH	AI100New	8.76	0.940	3.31	0.255	0.00736	0.0514	0.0755	1.57	0.0457	0.00058	0.0610	0.0325	84.9			
10/12/2016	12:03:03 PM	IST-M-7 ---2990	KB 380 CH	AI100New	8.88	0.955	3.40	0.255	0.0116	0.0509	0.0776	1.60	0.0444	0.00062	0.0643	0.0341	84.6			
10/12/2016	12:00:46 PM	IST-M-6 ---90-BE	KB 380 CH	AI100New	8.84	0.952	3.37	0.249	<0.00100	0.0516	0.0768	1.54	0.0460	0.00091	0.0612	0.0328	84.8			
10/12/2016	11:58:35 AM	IST-M-5---40566-07	KB 380 CH	AI100New	8.70	0.931	3.34	0.249	0.00965	0.0499	0.0763	1.57	0.0460	0.00069	0.0626	0.0334	84.9			
10/12/2016	11:56:14 AM	IST-M---21 ---	MACH---2 SS-390 BD	AI100New	15.95	0.857	4.74	0.247	0.276	0.0500	0.0361	0.780	0.0646	<0.00050	0.0264	0.0494	76.9			
10/12/2016	11:53:50 AM	IST-M---18 ---242664-R	SS-390 BD	AI100New	16.83	0.850	4.62	0.215	0.524	0.0460	0.0474	0.777	0.0625	<0.00050	0.0297	0.0373	76.0			
10/12/2016	11:49:37 AM	IST-M---17 ---1650	SS-390 BD	AI100New	16.79	0.838	4.59	0.212	0.505	0.0452	0.0468	0.751	0.0620	0.00053	0.0293	0.0360	76.1			
10/12/2016	11:45:11 AM	IST-M-16 ---4180-034-0560	MACH---11 SS-390 BD	AI100New	15.00	0.880	4.80	0.213	0.510	0.0475	0.0505	0.802	0.0644	<0.00050	0.0306	0.0366	77.6			
10/12/2016	11:42:36 AM	IST-M---15 ---8344	SS-390 BD	AI100New	16.20	0.850	4.74	0.208	0.500	0.0457	0.0507	0.771	0.0632	0.00056	0.0302	0.0366	76.5			
10/12/2016	11:34:14 AM	IST-M-10 ---4026	SS-390 BD	AI100New	16.66	0.849	4.71	0.207	0.521	0.0452	0.0510	0.773	0.0621	<0.00050	0.0307	0.0348	76.1			
10/12/2016	11:32:07 AM	IST-M---8 ---4026	MACH-D SS-390 BD	AI100New	15.95	0.845	4.65	0.220	0.426	0.0477	0.0356	0.749	0.0644	<0.00050	0.0270	0.0402	76.9			
10/12/2016	11:29:32 AM	IST-M-2 -1130-034-0562	SS-390 BD	AI100New	16.15	0.857	4.60	0.213	0.544	0.0467	0.0473	0.811	0.0632	<0.00050	0.0309	0.0356	76.6			
10/12/2016	11:26:26 AM		IST-M---1 SS-390 BD	AI100New	15.78	0.880	4.61	0.219	0.523	0.0477	0.0455	0.792	0.0635	<0.00050	0.0294	0.0359	77.0			
10/12/2016	11:23:53 AM		IST---RF8 KB 380 CH	AI100New	8.62	0.930	3.38	0.245	0.00827	0.0503	0.0760	1.58	0.0471	<0.00050	0.0637	0.0338	85.0			
10/12/2016	11:21:52 AM	IST---RF4	KB 380 CH	AI100New	8.89	0.977	3.42	0.254	0.00879	0.0520	0.0774	1.59	0.0456	0.00069	0.0652	0.0334	84.6			
10/12/2016	11:19:44 AM	IST---RF7	SS-390 BD	AI100New	16.54	0.863	4.78	0.207	0.507	0.0455	0.0507	0.779	0.0626	<0.00050	0.0314	0.0364	76.1			
10/12/2016	11:17:41 AM	IST RF6	SS-390 BD	AI100New	16.05	0.869	4.80	0.208	0.508	0.0466	0.0496	0.787	0.0636	<0.00050	0.0305	0.0363	76.6			
10/12/2016	10:50:25 AM	IST---RF6	SS-390 BD	AI100New	16.61	0.859	4.77	0.210	0.511	0.0467	0.0488	0.778	0.0627	<0.00050	0.0303	0.0366	76.0			
10/12/2016	10:47:45 AM	SS-390 BD		AI100New	17.45	0.848	4.50	0.239	0.620	0.0505	0.117	0.449	0.0828	<0.00050	0.0778	0.0857	75.5			
10/12/2016	10:45:28 AM	KB 380 CH		AI100New	7.77	0.607	4.13	0.568	0.0525	0.0309	0.109	0.870	0.0336	<0.00050	0.180	0.0757	85.6			
10/12/2016	10:40:55 AM	RF6		SS-390 BD	AI100New	16.40	0.785	4.77	0.195	0.487	0.0429	0.0464	0.767	0.0566	<0.00050	0.0295	0.0354	76.4		
10/12/2016	10:09:18 AM	TRIALCO	HT# J104	SS-390 BD	AI100New	16.50	0.785	4.43	0.259	0.579	0.0421	0.0190	0.654	0.0974	<0.00050	0.0142	0.00771	76.6		
10/12/2016	12:15:59 AM	DCM19 RFBC3P7L328AE 3RD		KB 380 CH	AI100New	8.71	0.845	3.12	0.253	0.00637	0.0487	0.0682	1.47	0.0436	0.00094	0.0587	0.0221	85.4		
10/12/2016	12:14:38 AM	DCM14 37778-07 3RD.		KB 380 CH	AI100New	8.69	0.846	3.16	0.251	0.00385	0.0483	0.0690	1.47	0.0433	0.00105	0.0595	0.0222	85.3		
10/12/2016	12:13:15 AM	DCM7 04752990AB 3RD.		KB 380 CH	AI100New	8.63	0.847	3.15	0.252	0.00539	0.0487	0.0695	1.47	0.0440	0.00063	0.0601	0.0223	85.4		
10/12/2016	12:11:47 AM	DCM6 SET-UP 3RD.		KB 380 CH	AI100New	8.79	0.875	3.21	0.254	<0.00100	0.0499	0.0701	1.46	0.0427	0.00085	0.0603	0.0233	85.2		
10/12/2016	12:10:26 AM	DCM5 40566-07 3RD.		KB 380 CH	AI100New	8.75	0.857	3.17	0.252	0.00414	0.0486	0.0687	1.47	0.0435	0.00068	0.0598	0.0228	85.2		
10/12/2016	12:08:54 AM	DCM21 SET-UP 3RD.	DOWN.	SS-390 BD	AI100New	16.14	0.768	4.54	0.221	0.332	0.0445	0.0356	1.38	0.0575	0.00066	0.0256	0.0422	77.1		
10/12/2016	12:03:20 AM	DCM18 242664R 3RD.		SS-390 BD	AI100New	16.66	0.757	4.60	0.198	0.482	0.0413	0.0475	0.740	0.0558	<0.00050	0.0288	0.0337	76.4		
10/12/2016	12:01:56 AM	DCM17 24231650 3RD.		SS-390 BD	AI100New	16.29	0.772	4.68	0.199	0.491	0.0419	0.0476	0.750	0.0559	<0.00050	0.0295	0.0341	76.6		
10/12/2016	12:01:16 AM	DCM16 4180-034-0560 3RD		SS-390 BD	AI100New	16.31	0.770	4.66	0.198	0.478	0.0419	0.0472	0.741	0.0560	0.00066	0.0288	0.0352	76.6		
10/11/2016	11:59:15 PM	DCM15 24268344R 3RD.		SS-390 BD	AI100New	16.45	0.756	4.67	0.197	0.482	0.0415	0.0468	0.746	0.0559	<0.00050	0.0290	0.0346	76.5		
10/11/2016	11:55:18 PM	DCM10 24224026 3RD.		SS-390 BD	AI100New	16.90	0.750	4.41	0.188	0.463	0.0405	0.0428	0.731	0.0544	<0.00050	0.0261	0.0304	76.4		
10/11/2016	11:52:29 PM	DCM8 24224026 3RD.	DOWN.	SS-390 BD	AI100New	16.45	0.745	4.51	0.200	0.394	0.0428	0.0319	0.718	0.0560	<0.00050	0.0245	0.0373	76.8		
10/11/2016	11:49:26 PM	DCM2 1130-034-0562 3RD.		SS-390 BD	AI100New	16.17	0.761	4.49	0.199	0.465	0.0424	0.0439	0.786	0.0560	0.00063	0.0291	0.0331	76.9		
10/11/2016	11:47:25 PM	DCM1 24224026 3RD.		SS-390 BD	AI100New	16.68	0.772	4.38	0.194	0.455	0.0419	0.0418	0.746	0.0551	<0.00050	0.0269	0.0298	76.6		
10/11/2016	11:39:43 PM	RF=7 3RD		SS-390 BD	AI100New	16.38	0.753	4.53	0.194	0.474	0.0412	0.0455	0.739	0.0556	0.00072	0.0279	0.0322	76.7		
10/11/2016	11:36:56 PM	RF=6 3RD		SS-390 BD	AI100New	16.57	0.751	4.54	0.195	0.456	0.0415	0.0453	0.749	0.0553	<0.00050	0.0283	0.0329	76.5		
10/11/2016	11:35:28 PM	RF=8 3RD		KB 380 CH	AI100New	8.58	0.823	3.11	0.252	<0.00100	0.0508	0.0678	1.45	0.0455	0.00064	0.0589	0.0218	85.5		
10/11/2016	11:34:05 PM	RF=4 3RD		KB 380 CH	AI100New	8.60	0.826	3.14	0.245	0.00664	0.0479	0.0668	1.51	0.0432	<0.00050	0.0577	0.0221	85.4		
10/11/2016	9:46:30 PM	MACH 19 2ND 7L328		KB 380 CH	AI100New	9.11	0.894	3.25	0.262	0.00615	0.0483	0.0725	1.62	0.0452	0.00106	0.0656	0.0241	84.6		
10/11/2016	9:44:48 PM	MACH 14 2ND 3778-07		KB 380 CH	AI100New	9.11	0.888	3.22	0.259	0.00207	0.0497	0.0705	1.55	0.0449	0.00117	0.0638	0.0232	84.7		

102761 Analyses

1 marked analyses

SUPER

Num

Basic

Terminal:1

DIA 2000 SE - Analyses management system [ Quantron / Basic ]

FileEditViewFormatsExtrasBasic filesConfigurationHelp

FilesPrintStatisticsExportFilterViewDetailsLoginHelpHomeWeb

DIA 2000

Standard<no Selection>Start

Date	Time	SampleNo	Comments	Quality	Method	Si	Fe	Cu	Mn	Mg	Cr	Ni	Zn	Ti	Cd	Pb	Sn	Al	SF
10/12/2016	12:47:20 PM	40915		INCOMINI	KB 380 CH	AI100New	8.74	0.908	3.42	0.247	0.00599	0.0470	0.0739	1.46	0.0447	<0.00050	0.0595	0.0321	85.0
10/12/2016	12:07:47 PM	IST--M--19 ---328			KB 380 CH	AI100New	8.68	0.931	3.32	0.251	0.0121	0.0506	0.0752	1.58	0.0465	0.00076	0.0620	0.0330	85.0
10/12/2016	12:05:40 PM	IST--M--14 ---37778--07			KB 380 CH	AI100New	8.76	0.940	3.31	0.255	0.00736	0.0514	0.0755	1.57	0.0457	0.00058	0.0610	0.0325	84.9
10/12/2016	12:03:03 PM	IST--M--7			KB 380 CH	AI100New	8.68	0.931	3.32	0.251	0.0121	0.0506	0.0752	1.58	0.0465	0.00076	0.0620	0.0330	85.0
10/12/2016	12:00:46 PM	IST--M--4			KB 380 CH	AI100New	8.74	0.908	3.42	0.247	0.00599	0.0470	0.0739	1.46	0.0447	<0.00050	0.0595	0.0321	85.0
10/12/2016	11:58:35 AM	IST--M--5			KB 380 CH	AI100New	8.68	0.931	3.32	0.251	0.0121	0.0506	0.0752	1.58	0.0465	0.00076	0.0620	0.0330	85.0
10/12/2016	11:56:14 AM	IST--M--			KB 380 CH	AI100New	8.76	0.940	3.31	0.255	0.00736	0.0514	0.0755	1.57	0.0457	0.00058	0.0610	0.0325	84.9
10/12/2016	11:53:50 AM	IST--M--			KB 380 CH	AI100New	8.68	0.931	3.32	0.251	0.0121	0.0506	0.0752	1.58	0.0465	0.00076	0.0620	0.0330	85.0
10/12/2016	11:49:37 AM	IST--M--			KB 380 CH	AI100New	8.74	0.908	3.42	0.247	0.00599	0.0470	0.0739	1.46	0.0447	<0.00050	0.0595	0.0321	85.0
10/12/2016	11:45:11 AM	IST--M--1			KB 380 CH	AI100New	8.68	0.931	3.32	0.251	0.0121	0.0506	0.0752	1.58	0.0465	0.00076	0.0620	0.0330	85.0
10/12/2016	11:42:36 AM	IST--M--			KB 380 CH	AI100New	8.76	0.940	3.31	0.255	0.00736	0.0514	0.0755	1.57	0.0457	0.00058	0.0610	0.0325	84.9
10/12/2016	11:34:14 AM	IST--M--			KB 380 CH	AI100New	8.68	0.931	3.32	0.251	0.0121	0.0506	0.0752	1.58	0.0465	0.00076	0.0620	0.0330	85.0
10/12/2016	11:32:07 AM	IST--M--			KB 380 CH	AI100New	8.74	0.908	3.42	0.247	0.00599	0.0470	0.0739	1.46	0.0447	<0.00050	0.0595	0.0321	85.0
10/12/2016	11:29:32 AM	IST--M--2			KB 380 CH	AI100New	8.68	0.931	3.32	0.251	0.0121	0.0506	0.0752	1.58	0.0465	0.00076	0.0620	0.0330	85.0
10/12/2016	11:26:26 AM				KB 380 CH	AI100New	8.76	0.940	3.31	0.255	0.00736	0.0514	0.0755	1.57	0.0457	0.00058	0.0610	0.0325	84.9
10/12/2016	11:23:53 AM				KB 380 CH	AI100New	8.68	0.931	3.32	0.251	0.0121	0.0506	0.0752	1.58	0.0465	0.00076	0.0620	0.0330	85.0
10/12/2016	11:21:52 AM	IST--RF4			KB 380 CH	AI100New	8.74	0.908	3.42	0.247	0.00599	0.0470	0.0739	1.46	0.0447	<0.00050	0.0595	0.0321	85.0
10/12/2016	11:19:44 AM	IST--RF7			KB 380 CH	AI100New	8.68	0.931	3.32	0.251	0.0121	0.0506	0.0752	1.58	0.0465	0.00076	0.0620	0.0330	85.0
10/12/2016	11:17:41 AM	IST--RF6			KB 380 CH	AI100New	8.76	0.940	3.31	0.255	0.00736	0.0514	0.0755	1.57	0.0457	0.00058	0.0610	0.0325	84.9
10/12/2016	10:50:25 AM	IST--RF6			KB 380 CH	AI100New	8.68	0.931	3.32	0.251	0.0121	0.0506	0.0752	1.58	0.0465	0.00076	0.0620	0.0330	85.0
10/12/2016	10:47:45 AM	SS-390			KB 380 CH	AI100New	8.74	0.908	3.42	0.247	0.00599	0.0470	0.0739	1.46	0.0447	<0.00050	0.0595	0.0321	85.0
10/12/2016	10:45:28 AM	KB 380			KB 380 CH	AI100New	8.68	0.931	3.32	0.251	0.0121	0.0506	0.0752	1.58	0.0465	0.00076	0.0620	0.0330	85.0
10/12/2016	10:40:55 AM	RF6			KB 380 CH	AI100New	8.76	0.940	3.31	0.255	0.00736	0.0514	0.0755	1.57	0.0457	0.00058	0.0610	0.0325	84.9
10/12/2016	10:09:18 AM	TRIALCO			KB 380 CH	AI100New	8.68	0.931	3.32	0.251	0.0121	0.0506	0.0752	1.58	0.0465	0.00076	0.0620	0.0330	85.0
10/12/2016	12:15:59 AM	DCM19			KB 380 CH	AI100New	8.74	0.908	3.42	0.247	0.00599	0.0470	0.0739	1.46	0.0447	<0.00050	0.0595	0.0321	85.0
10/12/2016	12:14:38 AM	DCM14			KB 380 CH	AI100New	8.68	0.931	3.32	0.251	0.0121	0.0506	0.0752	1.58	0.0465	0.00076	0.0620	0.0330	85.0
10/12/2016	12:13:15 AM	DCM7			KB 380 CH	AI100New	8.76	0.940	3.31	0.255	0.00736	0.0514	0.0755	1.57	0.0457	0.00058	0.0610	0.0325	84.9
10/12/2016	12:11:47 AM	DCM6			KB 380 CH	AI100New	8.68	0.931	3.32	0.251	0.0121	0.0506	0.0752	1.58	0.0465	0.00076	0.0620	0.0330	85.0
10/12/2016	12:10:26 AM	DCM5			KB 380 CH	AI100New	8.74	0.908	3.42	0.247	0.00599	0.0470	0.0739	1.46	0.0447	<0.00050	0.0595	0.0321	85.0
10/12/2016	12:08:54 AM	DCM21			KB 380 CH	AI100New	8.68	0.931	3.32	0.251	0.0121	0.0506	0.0752	1.58	0.0465	0.00076	0.0620	0.0330	85.0
10/12/2016	12:03:20 AM	DCM18			KB 380 CH	AI100New	8.76	0.940	3.31	0.255	0.00736	0.0514	0.0755	1.57	0.0457	0.00058	0.0610	0.0325	84.9
10/12/2016	12:01:56 AM	DCM17			KB 380 CH	AI100New	8.68	0.931	3.32	0.251	0.0121	0.0506	0.0752	1.58	0.0465	0.00076	0.0620	0.0330	85.0
10/12/2016	12:01:16 AM	DCM16			KB 380 CH	AI100New	8.74	0.908	3.42	0.247	0.00599	0.0470	0.0739	1.46	0.0447	<0.00050	0.0595	0.0321	85.0
10/11/2016	11:59:15 PM	DCM15			KB 380 CH	AI100New	8.68	0.931	3.32	0.251	0.0121	0.0506	0.0752	1.58	0.0465	0.00076	0.0620	0.0330	85.0
10/11/2016	11:55:18 PM	DCM10			KB 380 CH	AI100New	8.76	0.940	3.31	0.255	0.00736	0.0514	0.0755	1.57	0.0457	0.00058	0.0610	0.0325	84.9
10/11/2016	11:52:29 PM	DCM8			KB 380 CH	AI100New	8.68	0.931	3.32	0.251	0.0121	0.0506	0.0752	1.58	0.0465	0.00076	0.0620	0.0330	85.0
10/11/2016	11:49:26 PM	DCM2			KB 380 CH	AI100New	8.74	0.908	3.42	0.247	0.00599	0.0470	0.0739	1.46	0.0447	<0.00050	0.0595	0.0321	85.0
10/11/2016	11:47:25 PM	DCM1	24224026	3RD.	SS-390 BD	AI100New	16.68	0.772	4.38	0.194	0.455	0.0419	0.0418	0.746	0.0551	<0.00050	0.0269	0.0298	76.6
10/11/2016	11:39:43 PM	RF=7	3RD		SS-390 BD	AI100New	16.38	0.753	4.53	0.194	0.474	0.0412	0.0455	0.739	0.0556	0.00072	0.0279	0.0322	76.7
10/11/2016	11:36:56 PM	RF=6	3RD		SS-390 BD	AI100New	16.57	0.751	4.54	0.195	0.456	0.0415	0.0453	0.749	0.0553	<0.00050	0.0283	0.0329	76.5
10/11/2016	11:35:28 PM	RF=8	3RD		KB 380 CH	AI100New	8.58	0.823	3.11	0.252	<0.00100	0.0508	0.0678	1.45	0.0455	0.00064	0.0589	0.0218	85.5
10/11/2016	11:34:05 PM	RF=4	3RD		KB 380 CH	AI100New	8.60	0.826	3.14	0.245	0.00664	0.0479	0.0668	1.51	0.0432	<0.00050	0.0577	0.0221	85.4
10/11/2016	9:46:30 PM	MACH 19 2ND	7L328		KB 380 CH	AI100New	9.11	0.894	3.25	0.262	0.00615	0.0483	0.0725	1.62	0.0452	0.00106	0.0656	0.0241	84.6
10/11/2016	9:44:48 PM	MACH 14 2ND	3778-07		KB 380 CH	AI100New	9.11	0.888	3.22	0.259	0.00207	0.0497	0.0705	1.55	0.0449	0.00117	0.0638	0.0232	84.7

Detail of analysis 10/12/2016 12:47:20 PM

NameValue

Date10/12/2016

InstrumentQM

ProgramAI100New

QualityOKT

QualityKB 380 CH

QualityVersion1

SampleNo40915

CommentsINCOMING METAL

StatusElement Concentr. Type c

Time12:47:20 PM

TypeAverage

QMPrint0

AverOutN

QMDelete

AI100New

Al%

ext Max

int Max

85.0

Cd%

ext Max

int Max

<0.00050

Cr%

ext Max

int Max

0.0470

Cu%

ext Max

int Max

3.42

Fe%

ext Max

int Max

0.908

Mg%

ext Max

int Max

0.00599

Mn%

ext Max

int Max

0.5

Ni%

ext Max

int Max

0.0739

Pb%

ext Max

int Max

0.0595

Si%

ext Max

int Max

9.5

Sludge%

ext Max

int Max

8.74

Sn%

ext Max

int Max

0.35

Ti%

ext Max

int Max

0.0447

Zn%

ext Max

int Max

1.46

Additional display:

Print

<Audit Trail>

Close

102761 Analyses1 marked analysesSUPERNumBasicTerminal:1

2:06 PM8/6/2018

DIA 2000 SE - Analyses management system [ Quantron / Basic ]

FileEditViewFormatsExtrasBasic filesConfigurationHelp

FilesPrintStatisticsExportFilterViewDetailsLoginHelpHomeWeb

DIA 2000

Standard<no Selection>Start

Date	Time	SampleNo	Comments	Quality	Method	Si	Fe	Cu	Mn	Mg	Cr	Ni	Zn	Ti	Cd	Pb	Sn	Al	SF
10/12/2016	12:47:20 PM	40915	INCOMINI	KB 380 CH	AI100New	8.74	0.908	3.42	0.247	0.00539	0.0470	0.0739	1.46	0.0447	<0.00050	0.0595	0.0321	85.0	
10/12/2016	12:07:47 PM	IST--M---19 ---328		KB 380 CH	AI100New	8.68	0.931	3.32	0.251	0.0121	0.0506	0.0752	1.58	0.0465	0.00076	0.0620	0.0330	85.0	
10/12/2016	12:05:40 PM	IST--M---14 ---37778-07		KB 380 CH	AI100New	8.76	0.940	3.31	0.255	0.00736	0.0514	0.0755	1.57	0.0457	0.00058	0.0610	0.0325	84.9	
10/12/2016	12:03:03 PM	IST--M---7 ---2990		KB 380 CH	AI100New	8.80	0.955	3.40	0.255	0.0116	0.0500	0.0776	1.60	0.0444	0.00062	0.0643	0.0341	84.6	
10/12/2016	12:00:46 PM	IST--M---6 ---90		KB 380 CH	AI100New	8.76	0.940	3.31	0.255	0.00736	0.0514	0.0755	1.57	0.0457	0.00058	0.0610	0.0325	84.9	
10/12/2016	11:58:35 AM	IST--M---5 ---405		KB 380 CH	AI100New	8.76	0.940	3.31	0.255	0.00736	0.0514	0.0755	1.57	0.0457	0.00058	0.0610	0.0325	84.9	
10/12/2016	11:56:14 AM	IST--M---21 ---		KB 380 CH	AI100New	8.76	0.940	3.31	0.255	0.00736	0.0514	0.0755	1.57	0.0457	0.00058	0.0610	0.0325	84.9	
10/12/2016	11:53:50 AM	IST--M---18 ---2		KB 380 CH	AI100New	8.76	0.940	3.31	0.255	0.00736	0.0514	0.0755	1.57	0.0457	0.00058	0.0610	0.0325	84.9	
10/12/2016	11:49:37 AM	IST--M---17 ---1		KB 380 CH	AI100New	8.76	0.940	3.31	0.255	0.00736	0.0514	0.0755	1.57	0.0457	0.00058	0.0610	0.0325	84.9	
10/12/2016	11:45:11 AM	IST--M---16 ---416		KB 380 CH	AI100New	8.76	0.940	3.31	0.255	0.00736	0.0514	0.0755	1.57	0.0457	0.00058	0.0610	0.0325	84.9	
10/12/2016	11:42:36 AM	IST--M---15 ---6		KB 380 CH	AI100New	8.76	0.940	3.31	0.255	0.00736	0.0514	0.0755	1.57	0.0457	0.00058	0.0610	0.0325	84.9	
10/12/2016	11:34:14 AM	IST--M---10 ---40		KB 380 CH	AI100New	8.76	0.940	3.31	0.255	0.00736	0.0514	0.0755	1.57	0.0457	0.00058	0.0610	0.0325	84.9	
10/12/2016	11:32:07 AM	IST--M---8 ---40		KB 380 CH	AI100New	8.76	0.940	3.31	0.255	0.00736	0.0514	0.0755	1.57	0.0457	0.00058	0.0610	0.0325	84.9	
10/12/2016	11:29:32 AM	IST--M---2 ---1130		KB 380 CH	AI100New	8.76	0.940	3.31	0.255	0.00736	0.0514	0.0755	1.57	0.0457	0.00058	0.0610	0.0325	84.9	
10/12/2016	11:26:26 AM			KB 380 CH	AI100New	8.76	0.940	3.31	0.255	0.00736	0.0514	0.0755	1.57	0.0457	0.00058	0.0610	0.0325	84.9	
10/12/2016	11:23:53 AM			KB 380 CH	AI100New	8.76	0.940	3.31	0.255	0.00736	0.0514	0.0755	1.57	0.0457	0.00058	0.0610	0.0325	84.9	
10/12/2016	11:21:52 AM	IST--RF4		KB 380 CH	AI100New	8.76	0.940	3.31	0.255	0.00736	0.0514	0.0755	1.57	0.0457	0.00058	0.0610	0.0325	84.9	
10/12/2016	11:19:44 AM	IST--RF7		KB 380 CH	AI100New	8.76	0.940	3.31	0.255	0.00736	0.0514	0.0755	1.57	0.0457	0.00058	0.0610	0.0325	84.9	
10/12/2016	11:17:41 AM	IST--RF6		KB 380 CH	AI100New	8.76	0.940	3.31	0.255	0.00736	0.0514	0.0755	1.57	0.0457	0.00058	0.0610	0.0325	84.9	
10/12/2016	10:50:25 AM	IST--RF6		KB 380 CH	AI100New	8.76	0.940	3.31	0.255	0.00736	0.0514	0.0755	1.57	0.0457	0.00058	0.0610	0.0325	84.9	
10/12/2016	10:47:45 AM	SS-390 BD		KB 380 CH	AI100New	8.76	0.940	3.31	0.255	0.00736	0.0514	0.0755	1.57	0.0457	0.00058	0.0610	0.0325	84.9	
10/12/2016	10:45:28 AM	KB 380 CH		KB 380 CH	AI100New	8.76	0.940	3.31	0.255	0.00736	0.0514	0.0755	1.57	0.0457	0.00058	0.0610	0.0325	84.9	
10/12/2016	10:40:55 AM	RF6		KB 380 CH	AI100New	8.76	0.940	3.31	0.255	0.00736	0.0514	0.0755	1.57	0.0457	0.00058	0.0610	0.0325	84.9	
10/12/2016	10:09:18 AM	TRIALCO		KB 380 CH	AI100New	8.76	0.940	3.31	0.255	0.00736	0.0514	0.0755	1.57	0.0457	0.00058	0.0610	0.0325	84.9	
10/12/2016	12:15:59 AM	DCM19 RF80		KB 380 CH	AI100New	8.76	0.940	3.31	0.255	0.00736	0.0514	0.0755	1.57	0.0457	0.00058	0.0610	0.0325	84.9	
10/12/2016	12:14:38 AM	DCM14 3777		KB 380 CH	AI100New	8.76	0.940	3.31	0.255	0.00736	0.0514	0.0755	1.57	0.0457	0.00058	0.0610	0.0325	84.9	
10/12/2016	12:13:15 AM	DCM7 04752		KB 380 CH	AI100New	8.76	0.940	3.31	0.255	0.00736	0.0514	0.0755	1.57	0.0457	0.00058	0.0610	0.0325	84.9	
10/12/2016	12:11:47 AM	DCM6 SET-L		KB 380 CH	AI100New	8.76	0.940	3.31	0.255	0.00736	0.0514	0.0755	1.57	0.0457	0.00058	0.0610	0.0325	84.9	
10/12/2016	12:10:26 AM	DCM5 40566		KB 380 CH	AI100New	8.76	0.940	3.31	0.255	0.00736	0.0514	0.0755	1.57	0.0457	0.00058	0.0610	0.0325	84.9	
10/12/2016	12:08:54 AM	DCM21 SET-L		KB 380 CH	AI100New	8.76	0.940	3.31	0.255	0.00736	0.0514	0.0755	1.57	0.0457	0.00058	0.0610	0.0325	84.9	
10/12/2016	12:03:20 AM	DCM18 2426		KB 380 CH	AI100New	8.76	0.940	3.31	0.255	0.00736	0.0514	0.0755	1.57	0.0457	0.00058	0.0610	0.0325	84.9	
10/12/2016	12:01:56 AM	DCM17 2423		KB 380 CH	AI100New	8.76	0.940	3.31	0.255	0.00736	0.0514	0.0755	1.57	0.0457	0.00058	0.0610	0.0325	84.9	
10/12/2016	12:01:16 AM	DCM16 4180		KB 380 CH	AI100New	8.76	0.940	3.31	0.255	0.00736	0.0514	0.0755	1.57	0.0457	0.00058	0.0610	0.0325	84.9	
10/11/2016	11:59:15 PM	DCM15 2426		KB 380 CH	AI100New	8.76	0.940	3.31	0.255	0.00736	0.0514	0.0755	1.57	0.0457	0.00058	0.0610	0.0325	84.9	
10/11/2016	11:55:18 PM	DCM10 2422		KB 380 CH	AI100New	8.76	0.940	3.31	0.255	0.00736	0.0514	0.0755	1.57	0.0457	0.00058	0.0610	0.0325	84.9	
10/11/2016	11:52:29 PM	DCM8 24224		KB 380 CH	AI100New	8.76	0.940	3.31	0.255	0.00736	0.0514	0.0755	1.57	0.0457	0.00058	0.0610	0.0325	84.9	
10/11/2016	11:49:26 PM	DCM2 1130-034-0362 3RD.		SS-390 BD	AI100New	16.68	0.772	4.38	0.194	0.455	0.0419	0.0418	0.746	0.0551	<0.00050	0.0269	0.0298	76.6	
10/11/2016	11:47:25 PM	DCM1 24224026 3RD.		SS-390 BD	AI100New	16.38	0.753	4.53	0.194	0.474	0.0412	0.0455	0.739	0.0556	0.00072	0.0279	0.0322	76.7	
10/11/2016	11:39:43 PM	RF=7 3RD.		SS-390 BD	AI100New	16.57	0.751	4.54	0.195	0.456	0.0415	0.0453	0.749	0.0553	<0.00050	0.0283	0.0329	76.5	
10/11/2016	11:36:56 PM	RF=6 3RD.		KB 380 CH	AI100New	8.58	0.823	3.11	0.252	<0.00100	0.0508	0.0678	1.45	0.0455	0.00064	0.0589	0.0218	85.5	
10/11/2016	11:35:28 PM	RF=8 3RD.		KB 380 CH	AI100New	8.60	0.826	3.14	0.245	0.00664	0.0479	0.0668	1.51	0.0432	<0.00050	0.0577	0.0221	85.4	
10/11/2016	11:34:05 PM	RF=4 3RD.		KB 380 CH	AI100New	9.11	0.894	3.25	0.262	0.00615	0.0483	0.0725	1.62	0.0452	0.00106	0.0656	0.0241	84.6	
10/11/2016	9:46:30 PM	MACH 19 2ND 7L328		KB 380 CH	AI100New	9.11	0.888	3.22	0.259	0.00207	0.0497	0.0705	1.55	0.0449	0.00117	0.0638	0.0232	84.7	
10/11/2016	9:44:48 PM	MACH 14 2ND 3778-07		KB 380 CH	AI100New	9.11	0.888	3.22	0.259	0.00207	0.0497	0.0705	1.55	0.0449	0.00117	0.0638	0.0232	84.7	

102761 Analyses1 marked analysesSUPERNumBasicTerminal:1

System - Setup

General system fieldsQuality parametersLogins

Auto-Backup to ASCII

Prevent duplicate analyses

Excel file extension

Displayformat Extrafields

Default archive

Marker for "Text in Analysisvalue"

Displaytext for "Text in Analysisvalue"

Statistic Ident

Statistic Ident Default

Save

Exit

Windows Taskbar

2:08 PM 8/6/2018



DIA 2000 SE - Analyses management system [Quatron / Basic]

FileEditViewFormatsExtrasBasic filesConfigurationHelp

FilesPrintStatisticsExportFilterViewDetailsLoginHelpHomeWeb

DIA 2000

Standard<no Selection>Start

Date	Time	SampleNo	Comments	Quality	Method	Si	Fe	Cu	Mn	Mg	Cr	Ni	Zn	Ti	Cd	Pb	Sn	Al	SF
10/12/2016	12:47:20 PM	40915	INCOMINI	KB 380 CH	Alt00New	8.74	0.908	3.42	0.247	0.00599	0.0470	0.0739	1.46	0.0447	<0.00050	0.0595	0.0321	85.0	
10/12/2016	12:07:47 PM	IST--M---19 ---328		KB 380 CH	Alt00New	8.68	0.931	3.32	0.251	0.0121	0.0506	0.0752	1.58	0.0465	0.00076	0.0620	0.0330	85.0	
10/12/2016	12:05:40 PM	IST--M---14 ---37778-07		KB 380 CH	Alt00New	8.76	0.940	3.31	0.255	0.00736	0.0514	0.0755	1.57	0.0457	0.00058	0.0610	0.0325	84.9	
10/12/2016	12:03:03 PM	IST--M--7 ---2990		KB 380 CH	Alt00New	8.60	0.955	3.40	0.255	0.0116	0.0500	0.0776	1.60	0.0444	0.00062	0.0643	0.0341	84.6	
10/12/2016	12:00:46 PM	IST--M-6 ---904														0.0612	0.0328	84.8	
10/12/2016	11:58:35 AM	IST--M---5---405														0.0626	0.0334	84.9	
10/12/2016	11:56:14 AM	IST--M---21 ---														0.0264	0.0494	76.9	
10/12/2016	11:53:50 AM	IST--M---18 ---2														0.0297	0.0373	76.0	
10/12/2016	11:49:37 AM	IST--M---17 ---1														0.0293	0.0360	76.1	
10/12/2016	11:45:11 AM	IST--M-16 ---418														0.0306	0.0366	77.6	
10/12/2016	11:42:36 AM	IST--M---15 ---8														0.0302	0.0366	76.5	
10/12/2016	11:34:14 AM	IST--M---10 ---40														0.0307	0.0348	76.1	
10/12/2016	11:32:07 AM	IST--M---8 ---40														0.0270	0.0402	76.9	
10/12/2016	11:29:32 AM	IST--M-2 ---1130														0.0309	0.0356	76.6	
10/12/2016	11:26:26 AM															0.0294	0.0359	77.0	
10/12/2016	11:23:53 AM															0.0637	0.0338	85.0	
10/12/2016	11:21:52 AM	IST--RF4														0.0652	0.0334	84.6	
10/12/2016	11:19:44 AM	IST--RF7														0.0314	0.0364	76.1	
10/12/2016	11:17:41 AM	IST RF6														0.0305	0.0363	76.6	
10/12/2016	10:50:25 AM	IST--RF6														0.0303	0.0366	76.0	
10/12/2016	10:47:45 AM	SS-390 BD														0.0778	0.0857	75.5	
10/12/2016	10:45:28 AM	KB 380 CH														0.180	0.0757	85.6	
10/12/2016	10:40:55 AM	RF6														0.0295	0.0354	76.4	
10/12/2016	10:09:18 AM	TRIALCO														0.0142	0.00771	76.6	
10/12/2016	12:15:59 AM	DCM19 RF6														0.0587	0.0221	85.4	
10/12/2016	12:14:38 AM	DCM14 3777														0.0595	0.0222	85.3	
10/12/2016	12:13:15 AM	DCM7 04752														0.0601	0.0223	85.4	
10/12/2016	12:11:47 AM	DCM6 SET-U														0.0603	0.0233	85.2	
10/12/2016	12:10:26 AM	DCM5 40566														0.0598	0.0228	85.2	
10/12/2016	12:08:54 AM	DCM21 SET-U														0.0256	0.0422	77.1	
10/12/2016	12:03:20 AM	DCM18 2426														0.0288	0.0337	76.4	
10/12/2016	12:01:56 AM	DCM17 2423														0.0295	0.0341	76.6	
10/12/2016	12:01:16 AM	DCM16 4180														0.0288	0.0352	76.6	
10/11/2016	11:59:15 PM	DCM15 2426														0.0290	0.0346	76.5	
10/11/2016	11:55:18 PM	DCM10 2422														0.0261	0.0304	76.4	
10/11/2016	11:52:29 PM	DCM8 24224														0.0245	0.0373	76.8	
10/11/2016	11:49:26 PM	DCM2 1130-03														0.0291	0.0331	76.9	
10/11/2016	11:47:25 PM	DCM1 24224026	3RD.		SS-390 BD	Alt00New	16.68	0.772	4.38	0.194	0.455	0.0419	0.0418	0.746	0.0551	<0.00050	0.0269	0.0298	76.6
10/11/2016	11:39:43 PM	RF=7	3RD		SS-390 BD	Alt00New	16.38	0.753	4.53	0.194	0.474	0.0412	0.0455	0.739	0.0556	0.00072	0.0279	0.0322	76.7
10/11/2016	11:36:56 PM	RF=6	3RD		SS-390 BD	Alt00New	16.57	0.751	4.54	0.195	0.456	0.0415	0.0453	0.749	0.0553	<0.00050	0.0283	0.0329	76.5
10/11/2016	11:35:28 PM	RF=8	3RD		KB 380 CH	Alt00New	8.58	0.823	3.11	0.252	<0.00100	0.0508	0.0678	1.45	0.0455	0.00064	0.0589	0.0218	85.5
10/11/2016	11:34:05 PM	RF=4	3RD		KB 380 CH	Alt00New	8.60	0.826	3.14	0.245	0.00664	0.0479	0.0668	1.51	0.0432	<0.00050	0.0577	0.0221	85.4
10/11/2016	9:46:30 PM	MACH 19 2ND 7L328			KB 380 CH	Alt00New	9.11	0.894	3.25	0.262	0.00615	0.0483	0.0725	1.62	0.0452	0.00106	0.0656	0.0241	84.6
10/11/2016	9:44:48 PM	MACH 14 2ND 3778-07			KB 380 CH	Alt00New	9.11	0.888	3.22	0.259	0.00207	0.0497	0.0705	1.55	0.0449	0.00117	0.0638	0.0232	84.7

102761 Analyses1 marked analysesSUPERNumBasicTerminal:1

2:08 PM8/6/2018

System - Setup

General system fieldsQuality parametersLogins

Which limits shall be used for "Quality identification" ?

internal

external

Setup which character should indicate a quality violation, also specify which limits to check?

!

internal

external

Check quality during import?

checked

Check quality of formula results?

unchecked

Elements, not (yet) analyzed will be marked as "not ok" during quality control check?

unchecked

Display colors are controlled by

Quality

Instrument

Specify type of quality flag (+, - is default)

<>

+-

Please choose the colors for violations of the internal and external quality limits

ExtMin

IntMin

Okay

IntMax

ExtMax

pen color

Background color

background color on print

Select quality additional field which contains the suffix for validation display:

Quality Groups

Edit

Quality Extrafields

Edit

Use alloy code

unchecked

Extrafield for alloy codeQualitygroup for alloy code

Save

Exit

DIA 2000 SE - Analyses management system [ Quantron / Basic ]

FileEditViewFormatsExtrasBasic filesConfigurationHelp

Files

Print

Statistics

Export

Filter

View

Details

Login

Help

Home

Web

DIA 2000

Standard

<no Selection>

Start

Date	Time	SampleNo	Comment	Quality	Method	Si	Fe	Cu	Mn	Mg	Cr	Ni	Zn	Ti	Cd	Pb	Sn	Al	SF
10/12/2016	12:47:20 PM	40915	INCOMIN	KB 380 CH	AI100New	8.74	0.908	3.42	0.247	0.00599	0.0470	0.0739	1.46	0.0447	<0.00050	0.0595	0.0321	85.0	
10/12/2016	12:07:47 PM	IST--M---19 ---328		KB 380 CH	AI100New	8.68	0.931	3.32	0.251	0.0121	0.0506	0.0752	1.58	0.0465	0.00076	0.0620	0.0330	85.0	
10/12/2016	12:05:40 PM	IST--M---14 ---37778-07		KB 380 CH	AI100New	8.76	0.940	3.31	0.255	0.00736	0.0514	0.0755	1.57	0.0457	0.00058	0.0610	0.0325	84.9	
10/12/2016	12:03:03 PM	IST--M--7 ---2990		KB 380 CH	AI100New	8.80	0.955	3.40	0.255	0.0116	0.0500	0.0770	1.60	0.0444	0.00062	0.0643	0.0341	84.6	
10/12/2016	12:00:46 PM	IST--M--6 ---90		KB 380 CH	AI100New	8.76	0.940	3.31	0.255	0.00736	0.0514	0.0755	1.57	0.0457	0.00058	0.0610	0.0325	84.9	
10/12/2016	11:58:35 AM	IST--M---5---409		KB 380 CH	AI100New	8.76	0.940	3.31	0.255	0.00736	0.0514	0.0755	1.57	0.0457	0.00058	0.0610	0.0325	84.9	
10/12/2016	11:56:14 AM	IST--M---21 ---		KB 380 CH	AI100New	8.76	0.940	3.31	0.255	0.00736	0.0514	0.0755	1.57	0.0457	0.00058	0.0610	0.0325	84.9	
10/12/2016	11:53:50 AM	IST--M---18 ---2		KB 380 CH	AI100New	8.76	0.940	3.31	0.255	0.00736	0.0514	0.0755	1.57	0.0457	0.00058	0.0610	0.0325	84.9	
10/12/2016	11:49:37 AM	IST--M---17 ---1		KB 380 CH	AI100New	8.76	0.940	3.31	0.255	0.00736	0.0514	0.0755	1.57	0.0457	0.00058	0.0610	0.0325	84.9	
10/12/2016	11:45:11 AM	IST--M--16 ---418		KB 380 CH	AI100New	8.76	0.940	3.31	0.255	0.00736	0.0514	0.0755	1.57	0.0457	0.00058	0.0610	0.0325	84.9	
10/12/2016	11:42:36 AM	IST--M---15 ---8		KB 380 CH	AI100New	8.76	0.940	3.31	0.255	0.00736	0.0514	0.0755	1.57	0.0457	0.00058	0.0610	0.0325	84.9	
10/12/2016	11:34:14 AM	IST--M---10 ---40		KB 380 CH	AI100New	8.76	0.940	3.31	0.255	0.00736	0.0514	0.0755	1.57	0.0457	0.00058	0.0610	0.0325	84.9	
10/12/2016	11:32:07 AM	IST--M---8 ---40		KB 380 CH	AI100New	8.76	0.940	3.31	0.255	0.00736	0.0514	0.0755	1.57	0.0457	0.00058	0.0610	0.0325	84.9	
10/12/2016	11:29:32 AM	IST--M--2 ---1130		KB 380 CH	AI100New	8.76	0.940	3.31	0.255	0.00736	0.0514	0.0755	1.57	0.0457	0.00058	0.0610	0.0325	84.9	
10/12/2016	11:26:26 AM			KB 380 CH	AI100New	8.76	0.940	3.31	0.255	0.00736	0.0514	0.0755	1.57	0.0457	0.00058	0.0610	0.0325	84.9	
10/12/2016	11:23:53 AM			KB 380 CH	AI100New	8.76	0.940	3.31	0.255	0.00736	0.0514	0.0755	1.57	0.0457	0.00058	0.0610	0.0325	84.9	
10/12/2016	11:21:52 AM	IST--RF4		KB 380 CH	AI100New	8.76	0.940	3.31	0.255	0.00736	0.0514	0.0755	1.57	0.0457	0.00058	0.0610	0.0325	84.9	
10/12/2016	11:19:44 AM	IST--RF7		KB 380 CH	AI100New	8.76	0.940	3.31	0.255	0.00736	0.0514	0.0755	1.57	0.0457	0.00058	0.0610	0.0325	84.9	
10/12/2016	11:17:41 AM	IST RF6		KB 380 CH	AI100New	8.76	0.940	3.31	0.255	0.00736	0.0514	0.0755	1.57	0.0457	0.00058	0.0610	0.0325	84.9	
10/12/2016	10:50:25 AM	IST--RF6		KB 380 CH	AI100New	8.76	0.940	3.31	0.255	0.00736	0.0514	0.0755	1.57	0.0457	0.00058	0.0610	0.0325	84.9	
10/12/2016	10:47:45 AM	SS-390 BD		KB 380 CH	AI100New	8.76	0.940	3.31	0.255	0.00736	0.0514	0.0755	1.57	0.0457	0.00058	0.0610	0.0325	84.9	
10/12/2016	10:45:28 AM	KB 380 CH		KB 380 CH	AI100New	8.76	0.940	3.31	0.255	0.00736	0.0514	0.0755	1.57	0.0457	0.00058	0.0610	0.0325	84.9	
10/12/2016	10:40:55 AM	RF6		KB 380 CH	AI100New	8.76	0.940	3.31	0.255	0.00736	0.0514	0.0755	1.57	0.0457	0.00058	0.0610	0.0325	84.9	
10/12/2016	10:09:18 AM	TRIALCO		KB 380 CH	AI100New	8.76	0.940	3.31	0.255	0.00736	0.0514	0.0755	1.57	0.0457	0.00058	0.0610	0.0325	84.9	
10/12/2016	12:15:59 AM	DCM19 RF6		KB 380 CH	AI100New	8.76	0.940	3.31	0.255	0.00736	0.0514	0.0755	1.57	0.0457	0.00058	0.0610	0.0325	84.9	
10/12/2016	12:14:38 AM	DCM14 3777		KB 380 CH	AI100New	8.76	0.940	3.31	0.255	0.00736	0.0514	0.0755	1.57	0.0457	0.00058	0.0610	0.0325	84.9	
10/12/2016	12:13:15 AM	DCM7 04752		KB 380 CH	AI100New	8.76	0.940	3.31	0.255	0.00736	0.0514	0.0755	1.57	0.0457	0.00058	0.0610	0.0325	84.9	
10/12/2016	12:11:47 AM	DCM6 SET-L		KB 380 CH	AI100New	8.76	0.940	3.31	0.255	0.00736	0.0514	0.0755	1.57	0.0457	0.00058	0.0610	0.0325	84.9	
10/12/2016	12:10:26 AM	DCM5 40566		KB 380 CH	AI100New	8.76	0.940	3.31	0.255	0.00736	0.0514	0.0755	1.57	0.0457	0.00058	0.0610	0.0325	84.9	
10/12/2016	12:08:54 AM	DCM21 SET-L		KB 380 CH	AI100New	8.76	0.940	3.31	0.255	0.00736	0.0514	0.0755	1.57	0.0457	0.00058	0.0610	0.0325	84.9	
10/12/2016	12:03:20 AM	DCM18 2426		KB 380 CH	AI100New	8.76	0.940	3.31	0.255	0.00736	0.0514	0.0755	1.57	0.0457	0.00058	0.0610	0.0325	84.9	
10/12/2016	12:01:56 AM	DCM17 2423		KB 380 CH	AI100New	8.76	0.940	3.31	0.255	0.00736	0.0514	0.0755	1.57	0.0457	0.00058	0.0610	0.0325	84.9	
10/12/2016	12:01:16 AM	DCM16 4180		KB 380 CH	AI100New	8.76	0.940	3.31	0.255	0.00736	0.0514	0.0755	1.57	0.0457	0.00058	0.0610	0.0325	84.9	
10/11/2016	11:59:15 PM	DCM15 2428		KB 380 CH	AI100New	8.76	0.940	3.31	0.255	0.00736	0.0514	0.0755	1.57	0.0457	0.00058	0.0610	0.0325	84.9	
10/11/2016	11:55:18 PM	DCM10 2422		KB 380 CH	AI100New	8.76	0.940	3.31	0.255	0.00736	0.0514	0.0755	1.57	0.0457	0.00058	0.0610	0.0325	84.9	
10/11/2016	11:52:29 PM	DCM8 2422		KB 380 CH	AI100New	8.76	0.940	3.31	0.255	0.00736	0.0514	0.0755	1.57	0.0457	0.00058	0.0610	0.0325	84.9	
10/11/2016	11:49:26 PM	DCM2 1130-03-0302 3RD.		SS-390 BD	AI100New	16.17	0.701	4.43	0.133	0.483	0.0424	0.0433	0.700	0.0300	0.00063	0.0291	0.0331	76.9	
10/11/2016	11:47:25 PM	DCM1 24224026 3RD.		SS-390 BD	AI100New	16.68	0.772	4.38	0.194	0.455	0.0419	0.0418	0.746	0.0551	<0.00050	0.0269	0.0298	76.6	
10/11/2016	11:39:43 PM	RF=7 3RD		SS-390 BD	AI100New	16.38	0.753	4.53	0.194	0.474	0.0412	0.0455	0.739	0.0556	0.00072	0.0279	0.0322	76.7	
10/11/2016	11:36:56 PM	RF=6 3RD		SS-390 BD	AI100New	16.57	0.751	4.54	0.195	0.456	0.0415	0.0453	0.749	0.0553	<0.00050	0.0283	0.0329	76.5	
10/11/2016	11:35:28 PM	RF=8 3RD		KB 380 CH	AI100New	8.58	0.823	3.11	0.252	<0.00100	0.0508	0.0678	1.45	0.0455	0.00064	0.0589	0.0218	85.5	
10/11/2016	11:34:05 PM	RF=4 3RD		KB 380 CH	AI100New	8.60	0.826	3.14	0.245	0.00664	0.0479	0.0668	1.51	0.0432	<0.00050	0.0577	0.0221	85.4	
10/11/2016	9:46:30 PM	MACH 19 2ND 7L328		KB 380 CH	AI100New	9.11	0.894	3.25	0.262	0.00615	0.0483	0.0725	1.62	0.0452	0.00106	0.0656	0.0241	84.6	
10/11/2016	9:44:48 PM	MACH 14 2ND 3778-07		KB 380 CH	AI100New	9.11	0.888	3.22	0.259	0.00207	0.0497	0.0705	1.55	0.0449	0.00117	0.0638	0.0232	84.7	

System - Setup

General system fields

Quality parameters

Logins

Number of licenses: 1

Current no. of logins: 1

Terminal number	User	Actual Date+Time
1	SUPERVISOR	8/6/2018 2:05:29 PM

Save

Exit

102761 Analyses

1 marked analyses

SUPER

Num

Basic

Terminal:1

2:09 PM

8/6/2018

DIA 2000 SE - Analyses management system [ Quantron / Basic ]

FileEditViewFormatsExtrasBasic filesConfigurationHelp

FilesPrintStatisticsExportFilterViewDetailsLoginHelpHomeWeb

DIA 2000

Standard<no Selection>Start

Date	Time	SampleNo	Comments	Quality	Method	Si	Fe	Cu	Mn	Mg	Cr	Ni	Zn	Ti	Cd	Pb	Sn	Al	SF
10/12/2016	12:47:20 PM	40915	INCOMIN	KB 380 CH	AI100New	8.74	0.908	3.42	0.247	0.00599	0.0470	0.0739	1.46	0.0447	<0.00050	0.0595	0.0321	85.0	
10/12/2016	12:07:47 PM	IST-M---19 ---328		KB 380 CH	AI100New	8.68	0.931	3.32	0.251	0.0121	0.0506	0.0752	1.58	0.0465	0.00076	0.0620	0.0330	85.0	
10/12/2016	12:05:40 PM	IST-M---14 ---37778													0.00058	0.0610	0.0325	84.9	
10/12/2016	12:03:03 PM	IST-M--7 ---2990													0.00062	0.0643	0.0341	84.6	
10/12/2016	12:00:46 PM	IST-M--6 ---90-BE													0.00091	0.0612	0.0328	84.8	
10/12/2016	11:58:35 AM	IST-M--5---40566-0													0.00069	0.0626	0.0334	84.9	
10/12/2016	11:56:14 AM	IST-M--21 ---													0.00050	0.0264	0.0494	76.9	
10/12/2016	11:53:50 AM	IST-M--18 ---24266													0.00050	0.0297	0.0373	76.0	
10/12/2016	11:49:37 AM	IST-M--17 ---1650													0.00053	0.0293	0.0360	76.1	
10/12/2016	11:45:11 AM	IST-M--16 --4180-034													0.00050	0.0306	0.0366	77.6	
10/12/2016	11:42:36 AM	I8ST-M--15 ---8344													0.00056	0.0302	0.0366	76.5	
10/12/2016	11:34:14 AM	IST-M--10 ---4026													0.00050	0.0307	0.0348	76.1	
10/12/2016	11:32:07 AM	IST-M--8 ---4026													0.00050	0.0270	0.0402	76.9	
10/12/2016	11:29:32 AM	IST-M--2 --1130-034													0.00050	0.0309	0.0356	76.6	
10/12/2016	11:26:26 AM														0.00050	0.0294	0.0359	77.0	
10/12/2016	11:23:53 AM														0.00050	0.0637	0.0338	85.0	
10/12/2016	11:21:52 AM	IST--RF4													0.00069	0.0652	0.0334	84.6	
10/12/2016	11:19:44 AM	IST--RF7													0.00050	0.0314	0.0364	76.1	
10/12/2016	11:17:41 AM	IST RF6													0.00050	0.0305	0.0363	76.6	
10/12/2016	10:50:25 AM	IST--RF6													0.00050	0.0303	0.0366	76.0	
10/12/2016	10:47:45 AM	SS-390 BD													0.00050	0.0778	0.0857	75.5	
10/12/2016	10:45:28 AM	KB 380 CH													0.00050	0.180	0.0757	86.6	
10/12/2016	10:40:55 AM	RF6													0.00050	0.0295	0.0354	76.4	
10/12/2016	10:09:18 AM	TRIALCO													0.00050	0.0142	0.00771	76.6	
10/12/2016	12:15:59 AM	DCM19 RFBC3P7L													0.00094	0.0587	0.0221	85.4	
10/12/2016	12:14:38 AM	DCM14 37778-07													0.00105	0.0595	0.0222	86.3	
10/12/2016	12:13:15 AM	DCM7 04752990AE													0.00063	0.0601	0.0223	85.4	
10/12/2016	12:11:47 AM	DCM6 SET-UP													0.00085	0.0603	0.0233	85.2	
10/12/2016	12:10:26 AM	DCM5 40566-07													0.00068	0.0598	0.0228	85.2	
10/12/2016	12:08:54 AM	DCM21 SET-UP													0.00066	0.0256	0.0422	77.1	
10/12/2016	12:03:20 AM	DCM18 242664R													0.00050	0.0288	0.0337	76.4	
10/12/2016	12:01:56 AM	DCM17 24231650													0.00050	0.0295	0.0341	76.6	
10/12/2016	12:01:16 AM	DCM16 4180-034-0													0.00066	0.0288	0.0352	76.6	
10/11/2016	11:59:15 PM	DCM15 24268344													0.00050	0.0290	0.0346	76.5	
10/11/2016	11:55:18 PM	DCM10 24224026													0.00050	0.0261	0.0304	76.4	
10/11/2016	11:52:29 PM	DCM8 24224026													0.00050	0.0245	0.0373	76.8	
10/11/2016	11:49:26 PM	DCM2 1130-034-05													0.00063	0.0291	0.0331	76.9	
10/11/2016	11:47:25 PM	DCM1 24224026													0.00050	0.0269	0.0298	76.6	
10/11/2016	11:39:43 PM	RF=7 3RD		SS-390 BD	AI100New	16.38	0.753	4.53	0.194	0.474	0.0412	0.0455	0.739	0.0556	0.00072	0.0279	0.0322	76.7	
10/11/2016	11:36:56 PM	RF=6 3RD		SS-390 BD	AI100New	16.57	0.751	4.54	0.195	0.456	0.0415	0.0453	0.749	0.0553	<0.00050	0.0283	0.0329	76.5	
10/11/2016	11:35:28 PM	RF=8 3RD		KB 380 CH	AI100New	8.58	0.823	3.11	0.252	<0.00100	0.0508	0.0678	1.45	0.0455	0.00064	0.0589	0.0218	85.5	
10/11/2016	11:34:05 PM	RF=4 3RD		KB 380 CH	AI100New	8.60	0.826	3.14	0.245	0.00664	0.0479	0.0668	1.51	0.0432	<0.00050	0.0577	0.0221	85.4	
10/11/2016	9:46:30 PM	MACH 19 2ND 7L328		KB 380 CH	AI100New	9.11	0.894	3.25	0.262	0.00615	0.0483	0.0725	1.62	0.0452	0.00106	0.0656	0.0241	84.6	
10/11/2016	9:44:48 PM	MACH 14 2ND 3778-07		KB 380 CH	AI100New	9.11	0.888	3.22	0.259	0.00207	0.0497	0.0705	1.55	0.0449	0.00117	0.0638	0.0232	84.7	

Terminal setup

Word processing programC:\Program Files\Microsoft Office\Office14\WINWORD.EXE

Spreadsheet programC:\Program Files\Microsoft Office\Office14\EXCEL.EXE

LanguageENG

Job server

Dimension%

If new analysis comes in

refresh screen

notify with message box

none

Font titleArial8Select

Font detailsMS Sans Serif8Select

Max. Number of analyses0

Usage Default

Use marked analysis only

Spark Analyzer Quality Exchange

Synchronize Qualities

Quality Exchange File

IP Address

Port at Server0

Port at DIA52800

Preceding text

5 CQual

Trailing text

#1

Logging

Changes will be active after restart.

Active

Log level

Logfile path

Save

Customize menu

Exit

102761 Analyses1 marked analysesSUPERNumBasicTerminal:1

2:09 PM8/6/2018

DIA 2000 SE - Analyses management system

FileEditViewFormatsExtrasBasic filesConfigurationHelp

Files

Print

Statistics

Export

Filter

View

Details

Login

Help

Home

Web

Standard

<no Selection>

Start

Date	Time	SampleNo	Comment	Quality	Methode	Si	Fe	Cu	Mn	Mg	Cr	Ni	Zn	Ti	Cd	Pb	Sn	Al	SF
10/12/2016	12:47:20 PM	40915	INCOMINI KB 380 CH	AI100New	8.74	0.908	3.42	0.247	0.00599	0.0470	0.0739	1.46	0.0447	<0.00050	0.0595	0.0321	85.0		
10/12/2016	12:07:47 PM	IST--M--19 ---328		KB 380 CH	AI100New	8.68	0.931	3.32	0.251	0.0121	0.0506	0.0752	1.58	0.0465	0.00076	0.0620	0.0330	85.0	
10/12/2016	12:05:40 PM	IST--M--14 ---37778--07		KB 380 CH	AI100New	8.76	0.940	3.31	0.255	0.00736	0.0514	0.0755	1.57	0.0457	0.00058	0.0610	0.0325	84.9	
10/12/2016	12:03:03 PM	IST--M--7 ---2990		KB 380 CH	AI100New	8.88	0.955	3.40	0.255	0.0116	0.0509	0.0776	1.60	0.0444	0.00062	0.0643	0.0341	84.6	
10/12/2016	12:00:46 PM	IST--M--6 ---90-BE		KB 380 CH	AI100New	8.84	0.952	3.37	0.249	<0.00100	0.0516	0.0768	1.54	0.0460	0.00091	0.0612	0.0328	84.8	
10/12/2016	11:58:35 AM	IST--M--5--- 40566--07		KB 380 CH	AI100New	8.70	0.931	3.34	0.249	0.00965	0.0499	0.0763	1.57	0.0460	0.00069	0.0626	0.0334	84.9	
10/12/2016	11:56:14 AM	IST--M--21 ---														0.0264	0.0494	76.9	
10/12/2016	11:53:50 AM	IST--M--18 ---														0.0297	0.0373	76.0	
10/12/2016	11:49:37 AM	IST--M--17 ---														0.0293	0.0360	76.1	
10/12/2016	11:45:11 AM	IST--M--16 --4														0.0306	0.0366	77.6	
10/12/2016	11:42:36 AM	IST--M--15 ---														0.0302	0.0366	76.5	
10/12/2016	11:34:14 AM	IST--M--10 ---														0.0307	0.0348	76.1	
10/12/2016	11:32:07 AM	IST--M--8 ---														0.0270	0.0402	76.9	
10/12/2016	11:29:32 AM	IST--M--2 ---11														0.0309	0.0356	76.6	
10/12/2016	11:26:26 AM															0.0294	0.0359	77.0	
10/12/2016	11:23:53 AM															0.0637	0.0338	85.0	
10/12/2016	11:21:52 AM	IST--RF4														0.0652	0.0334	84.6	
10/12/2016	11:19:44 AM	IST--RF7														0.0314	0.0364	76.1	
10/12/2016	11:17:41 AM	IST RF6														0.0305	0.0363	76.6	
10/12/2016	10:50:25 AM	IST--RF6														0.0303	0.0366	76.0	
10/12/2016	10:47:45 AM	SS-390 BD														0.0778	0.0857	75.5	
10/12/2016	10:45:28 AM	KB 380 CH														0.180	0.0757	85.6	
10/12/2016	10:40:55 AM	RF6														0.0295	0.0354	76.4	
10/12/2016	10:09:18 AM	TRIALCO														0.0142	0.00771	76.6	
10/12/2016	12:15:59 AM	DCM19 RF6														0.0587	0.0221	85.4	
10/12/2016	12:14:38 AM	DCM14 37														0.0595	0.0222	85.3	
10/12/2016	12:13:15 AM	DCM7 0475														0.0601	0.0223	85.4	
10/12/2016	12:11:47 AM	DCM6 SET														0.0603	0.0233	85.2	
10/12/2016	12:10:26 AM	DCM5 4056														0.0598	0.0228	85.2	
10/12/2016	12:08:54 AM	DCM21 SET														0.0256	0.0422	77.1	
10/12/2016	12:03:20 AM	DCM18 242														0.0288	0.0337	76.4	
10/12/2016	12:01:56 AM	DCM17 242														0.0295	0.0341	76.6	
10/12/2016	12:01:16 AM	DCM16 418														0.0288	0.0352	76.6	
10/11/2016	11:59:15 PM	DCM15 24														0.0290	0.0346	76.5	
10/11/2016	11:55:18 PM	DCM10 24224026 3RD.			SS-390 BD	AI100New	16.90	0.750	4.41	0.188	0.463	0.0405	0.0428	0.731	0.0544	<0.00050	0.0261	0.0304	76.4
10/11/2016	11:52:29 PM	DCM8 24224026 3RD.	DOWN.		SS-390 BD	AI100New	16.45	0.745	4.51	0.200	0.394	0.0428	0.0319	0.718	0.0560	<0.00050	0.0245	0.0373	76.8
10/11/2016	11:49:26 PM	DCM2 1130-034-0562 3RD.			SS-390 BD	AI100New	16.17	0.761	4.49	0.199	0.465	0.0424	0.0439	0.786	0.0560	0.00063	0.0291	0.0331	76.9
10/11/2016	11:47:25 PM	DCM1 24224026 3RD.			SS-390 BD	AI100New	16.68	0.772	4.38	0.194	0.455	0.0419	0.0418	0.746	0.0551	<0.00050	0.0269	0.0298	76.6
10/11/2016	11:39:43 PM	RF=7 3RD			SS-390 BD	AI100New	16.38	0.753	4.53	0.194	0.474	0.0412	0.0455	0.739	0.0556	0.00072	0.0279	0.0322	76.7
10/11/2016	11:36:56 PM	RF=6 3RD			SS-390 BD	AI100New	16.57	0.751	4.54	0.195	0.456	0.0415	0.0453	0.749	0.0553	<0.00050	0.0283	0.0329	76.5
10/11/2016	11:35:28 PM	RF=8 3RD			KB 380 CH	AI100New	8.58	0.823	3.11	0.252	<0.00100	0.0508	0.0678	1.45	0.0455	0.00064	0.0589	0.0218	85.5
10/11/2016	11:34:05 PM	RF=4 3RD			KB 380 CH	AI100New	8.60	0.826	3.14	0.245	0.00664	0.0479	0.0668	1.51	0.0432	<0.00050	0.0577	0.0221	85.4
10/11/2016	9:46:30 PM	MACH 19 2ND 7L328			KB 380 CH	AI100New	9.11	0.894	3.25	0.262	0.00615	0.0483	0.0725	1.62	0.0452	0.00106	0.0656	0.0241	84.6
10/11/2016	9:44:48 PM	MACH 14 2ND 3778-07			KB 380 CH	AI100New	9.11	0.888	3.22	0.259	0.00207	0.0497	0.0705	1.55	0.0449	0.00117	0.0638	0.0232	84.7

102761 Analyses

1 marked analyses

SUPER

Num

Basic

Terminal:1

2:10 PM  
8/6/2018

Sample ID

Order	ID	Field Name	Length	Plausi	Upper Case	Numeric	Must	Modifiable
1	Date	Date	30					X
2	Time	Time	30					X
3	SampleNo	SampleNo	30					X
4	Quality	Quality	30	X				X
5	QualOK	QualityOK	30	X				X
8	Methode	Program	30					X
9	Instr	Instrument	30					X
10	Type	Type	30	X				X
11	Status	Status	30	X				X
12	QualVer	QualityVersion	5					X
14	QMPrint	QMPrint	30					X
15	AverOutN	AverOutN	30					X
16	QMDelete	QMDelete	30					X
17	Comments	Comments	30					X

New

De-Activate

Plausibility

Properties

Close

DIA 2000 SE - Analyses management system

File Edit View Formats Extras Basic files Configuration Help

Files Print Statistics Export Filter View Details Login Help Home Web

Standard [no Selection] Start

Date	Time	SampleNo	Comment	Quality	Method	Si	Fe	Cu	Mn	Mg	Cr	Ni	Zn	Ti	Cd	Pb	Sn	Al	SF
10/12/2016	12:47:20 PM	40915	INCOMINI KB 380 CH	AI100New	8.74	0.908	3.42	0.247	0.00599	0.0470	0.0739	1.46	0.0447	<0.00050	0.0595	0.0321	85.0		
10/12/2016	12:07:47 PM	IST-M-19-328	KB 380 CH	AI100New	8.69	0.931	3.32	0.251	0.0121	0.0506	0.0752	1.58	0.0465	0.00076	0.0620	0.0330	85.0		
10/12/2016	12:05:40 PM	IST-M-14-37778-07	KB 380 CH	AI100New	8.76	0.940	3.31	0.255	0.00736	0.0514	0.0755	1.57	0.0457	0.00058	0.0610	0.0325	84.9		
10/12/2016	12:03:03 PM	IST-M-7-2990	KB 380 CH	AI100New	8.88	0.955	3.40	0.255	0.0116	0.0509	0.0776	1.60	0.0444	0.00062	0.0643	0.0341	84.6		
10/12/2016	12:00:46 PM	IST-M-6-90-BE	KB 380 CH	AI100New	8.84	0.952	3.37	0.249	<0.00100	0.0516	0.0768	1.54	0.0460	0.00091	0.0612	0.0328	84.8		
10/12/2016	11:58:35 AM	IST-M-5-40566-07	KB 380 CH	AI100New	8.70	0.931	3.34	0.249	0.00365	0.0499	0.0763	1.57	0.0460	0.00069	0.0626	0.0334	84.9		
10/12/2016	11:56:14 AM	IST-M-21-...	KB 380 CH	AI100New	8.70	0.931	3.34	0.249	0.00365	0.0499	0.0763	1.57	0.0460	0.00069	0.0626	0.0334	84.9		
10/12/2016	11:53:50 AM	IST-M-18-...	KB 380 CH	AI100New	8.70	0.931	3.34	0.249	0.00365	0.0499	0.0763	1.57	0.0460	0.00069	0.0626	0.0334	84.9		
10/12/2016	11:49:37 AM	IST-M-17-...	KB 380 CH	AI100New	8.70	0.931	3.34	0.249	0.00365	0.0499	0.0763	1.57	0.0460	0.00069	0.0626	0.0334	84.9		
10/12/2016	11:45:11 AM	IST-M-16-418	KB 380 CH	AI100New	8.70	0.931	3.34	0.249	0.00365	0.0499	0.0763	1.57	0.0460	0.00069	0.0626	0.0334	84.9		
10/12/2016	11:42:36 AM	IST-M-15-4	KB 380 CH	AI100New	8.70	0.931	3.34	0.249	0.00365	0.0499	0.0763	1.57	0.0460	0.00069	0.0626	0.0334	84.9		
10/12/2016	11:34:14 AM	IST-M-10-40	KB 380 CH	AI100New	8.70	0.931	3.34	0.249	0.00365	0.0499	0.0763	1.57	0.0460	0.00069	0.0626	0.0334	84.9		
10/12/2016	11:32:07 AM	IST-M-9-40	KB 380 CH	AI100New	8.70	0.931	3.34	0.249	0.00365	0.0499	0.0763	1.57	0.0460	0.00069	0.0626	0.0334	84.9		
10/12/2016	11:29:32 AM	IST-M-2-1136	KB 380 CH	AI100New	8.70	0.931	3.34	0.249	0.00365	0.0499	0.0763	1.57	0.0460	0.00069	0.0626	0.0334	84.9		
10/12/2016	11:26:26 AM	IST-M-2-1136	KB 380 CH	AI100New	8.70	0.931	3.34	0.249	0.00365	0.0499	0.0763	1.57	0.0460	0.00069	0.0626	0.0334	84.9		
10/12/2016	11:23:53 AM	IST-M-2-1136	KB 380 CH	AI100New	8.70	0.931	3.34	0.249	0.00365	0.0499	0.0763	1.57	0.0460	0.00069	0.0626	0.0334	84.9		
10/12/2016	11:21:52 AM	IST-RF4	KB 380 CH	AI100New	8.70	0.931	3.34	0.249	0.00365	0.0499	0.0763	1.57	0.0460	0.00069	0.0626	0.0334	84.9		
10/12/2016	11:19:44 AM	IST-RF7	KB 380 CH	AI100New	8.70	0.931	3.34	0.249	0.00365	0.0499	0.0763	1.57	0.0460	0.00069	0.0626	0.0334	84.9		
10/12/2016	11:17:41 AM	IST-RF6	KB 380 CH	AI100New	8.70	0.931	3.34	0.249	0.00365	0.0499	0.0763	1.57	0.0460	0.00069	0.0626	0.0334	84.9		
10/12/2016	10:50:25 AM	IST-RF6	KB 380 CH	AI100New	8.70	0.931	3.34	0.249	0.00365	0.0499	0.0763	1.57	0.0460	0.00069	0.0626	0.0334	84.9		
10/12/2016	10:47:45 AM	SS-390 BD	KB 380 CH	AI100New	8.70	0.931	3.34	0.249	0.00365	0.0499	0.0763	1.57	0.0460	0.00069	0.0626	0.0334	84.9		
10/12/2016	10:45:28 AM	KB 380 CH	KB 380 CH	AI100New	8.70	0.931	3.34	0.249	0.00365	0.0499	0.0763	1.57	0.0460	0.00069	0.0626	0.0334	84.9		
10/12/2016	10:40:55 AM	RF6	KB 380 CH	AI100New	8.70	0.931	3.34	0.249	0.00365	0.0499	0.0763	1.57	0.0460	0.00069	0.0626	0.0334	84.9		
10/12/2016	10:09:18 AM	TRIALCD	KB 380 CH	AI100New	8.70	0.931	3.34	0.249	0.00365	0.0499	0.0763	1.57	0.0460	0.00069	0.0626	0.0334	84.9		
10/12/2016	12:15:59 AM	DCM19 RF6	KB 380 CH	AI100New	8.70	0.931	3.34	0.249	0.00365	0.0499	0.0763	1.57	0.0460	0.00069	0.0626	0.0334	84.9		
10/12/2016	12:14:38 AM	DCM14 3777	KB 380 CH	AI100New	8.70	0.931	3.34	0.249	0.00365	0.0499	0.0763	1.57	0.0460	0.00069	0.0626	0.0334	84.9		
10/12/2016	12:13:15 AM	DCM7 04752	KB 380 CH	AI100New	8.70	0.931	3.34	0.249	0.00365	0.0499	0.0763	1.57	0.0460	0.00069	0.0626	0.0334	84.9		
10/12/2016	12:11:47 AM	DCM6 SET-L	KB 380 CH	AI100New	8.70	0.931	3.34	0.249	0.00365	0.0499	0.0763	1.57	0.0460	0.00069	0.0626	0.0334	84.9		
10/12/2016	12:10:26 AM	DCM5 40566	KB 380 CH	AI100New	8.70	0.931	3.34	0.249	0.00365	0.0499	0.0763	1.57	0.0460	0.00069	0.0626	0.0334	84.9		
10/12/2016	12:08:54 AM	DCM21 SET-L	KB 380 CH	AI100New	8.70	0.931	3.34	0.249	0.00365	0.0499	0.0763	1.57	0.0460	0.00069	0.0626	0.0334	84.9		
10/12/2016	12:03:20 AM	DCM18 2426	KB 380 CH	AI100New	8.70	0.931	3.34	0.249	0.00365	0.0499	0.0763	1.57	0.0460	0.00069	0.0626	0.0334	84.9		
10/12/2016	12:01:56 AM	DCM17 2423	KB 380 CH	AI100New	8.70	0.931	3.34	0.249	0.00365	0.0499	0.0763	1.57	0.0460	0.00069	0.0626	0.0334	84.9		
10/12/2016	12:01:16 AM	DCM16 4180	KB 380 CH	AI100New	8.70	0.931	3.34	0.249	0.00365	0.0499	0.0763	1.57	0.0460	0.00069	0.0626	0.0334	84.9		
10/11/2016	11:59:15 PM	DCM15 2426	KB 380 CH	AI100New	8.70	0.931	3.34	0.249	0.00365	0.0499	0.0763	1.57	0.0460	0.00069	0.0626	0.0334	84.9		
10/11/2016	11:55:18 PM	DCM10 24224026 3RD.	DOWN.	SS-390 BD	AI100New	16.90	0.750	4.41	0.188	0.463	0.0405	0.0428	0.731	0.0544	<0.00050	0.0261	0.0304	76.4	
10/11/2016	11:52:29 PM	DCM8 24224026 3RD.	DOWN.	SS-390 BD	AI100New	16.45	0.745	4.51	0.200	0.394	0.0428	0.0319	0.718	0.0560	<0.00050	0.0245	0.0373	76.8	
10/11/2016	11:49:26 PM	DCM2 1130-034-0562 3RD.		SS-390 BD	AI100New	16.17	0.761	4.49	0.199	0.465	0.0424	0.0439	0.786	0.0560	0.00063	0.0291	0.0331	76.9	
10/11/2016	11:47:25 PM	DCM1 24224026 3RD.		SS-390 BD	AI100New	16.68	0.772	4.38	0.194	0.455	0.0419	0.0418	0.746	0.0551	<0.00050	0.0269	0.0298	76.6	
10/11/2016	11:39:43 PM	RF=7 3RD		SS-390 BD	AI100New	16.38	0.753	4.53	0.194	0.474	0.0412	0.0455	0.739	0.0556	0.00072	0.0279	0.0322	76.7	
10/11/2016	11:36:56 PM	RF=6 3RD		SS-390 BD	AI100New	16.57	0.751	4.54	0.195	0.456	0.0415	0.0453	0.749	0.0553	<0.00050	0.0283	0.0329	76.5	
10/11/2016	11:35:28 PM	RF=8 3RD		KB 380 CH	AI100New	8.58	0.823	3.11	0.252	<0.00100	0.0508	0.0678	1.45	0.0455	0.00064	0.0589	0.0218	85.5	
10/11/2016	11:34:05 PM	RF=4 3RD		KB 380 CH	AI100New	8.60	0.826	3.14	0.245	0.00664	0.0479	0.0668	1.51	0.0432	<0.00050	0.0577	0.0221	85.4	
10/11/2016	9:46:30 PM	MACH 19 2ND 7L328		KB 380 CH	AI100New	9.11	0.894	3.25	0.262	0.00615	0.0483	0.0725	1.62	0.0452	0.00106	0.0656	0.0241	84.6	
10/11/2016	9:44:48 PM	MACH 14 2ND 3778-07		KB 380 CH	AI100New	9.11	0.888	3.22	0.259	0.00207	0.0497	0.0705	1.55	0.0449	0.00117	0.0638	0.0232	84.7	

102761 Analyses 1 marked analyses SUPER Num Basic Terminal:1

2:11 PM 8/6/2018

DIA 2000 SE - Analyses management system

File Edit View Formats Extras Basic files Configuration Help

Files Print Statistics Export Filter View Details Login Help Home Web

Standard [no Selection] Start

Date	Time	SampleNo	Comment	Quality	Method	Si	Fe	Cu	Mn	Mg	Cr	Ni	Zn	Ti	Cd	Pb	Sn	Al	SF
10/12/2016	12:47:20 PM	40915	INCOMIN KB 380 CH	AI100New	8.74	0.908	3.42	0.247	0.00599	0.0470	0.0739	1.46	0.0447	<0.00050	0.0595	0.0321	85.0		
10/12/2016	12:07:47 PM	IST-M-19-328	KB 380 CH	AI100New	8.68	0.931	3.32	0.251	0.0121	0.0506	0.0752	1.58	0.0465	0.00076	0.0620	0.0330	85.0		
10/12/2016	12:05:40 PM	IST-M-14-37778-07	KB 380 CH	AI100New	8.76	0.940	3.31	0.255	0.00736	0.0514	0.0755	1.57	0.0457	0.00058	0.0610	0.0325	84.9		
10/12/2016	12:03:03 PM	IST-M-7-2990	KB 380 CH	AI100New	8.88	0.955	3.40	0.255	0.0116	0.0509	0.0776	1.60	0.0444	0.00062	0.0643	0.0341	84.6		
10/12/2016	12:00:46 PM	IST-M-6-90-BE	KB 380 CH	AI100New	8.84	0.952	3.37	0.249	<0.00100	0.0516	0.0768	1.54	0.0460	0.00091	0.0612	0.0328	84.8		
10/12/2016	11:58:35 AM	IST-M-5-40568-07	KB 380 CH	AI100New	8.70	0.931	3.34	0.249	0.00365	0.0499	0.0763	1.57	0.0460	0.00069	0.0626	0.0334	84.9		
10/12/2016	11:56:14 AM	IST-M-21													0.0264	0.0494	76.9		
10/12/2016	11:53:50 AM	IST-M-18													0.0297	0.0373	76.0		
10/12/2016	11:49:37 AM	IST-M-17													0.0293	0.0360	76.1		
10/12/2016	11:45:11 AM	IST-M-16													0.0306	0.0366	77.6		
10/12/2016	11:42:36 AM	IST-M-15													0.0302	0.0366	76.5		
10/12/2016	11:34:14 AM	IST-M-10													0.0307	0.0348	76.1		
10/12/2016	11:32:07 AM	IST-M-9													0.0270	0.0402	76.9		
10/12/2016	11:29:32 AM	IST-M-2													0.0309	0.0356	76.6		
10/12/2016	11:26:26 AM														0.0294	0.0359	77.0		
10/12/2016	11:23:53 AM														0.0637	0.0338	85.0		
10/12/2016	11:21:52 AM	IST-RF4													0.0652	0.0334	84.6		
10/12/2016	11:19:44 AM	IST-RF7													0.0314	0.0364	76.1		
10/12/2016	11:17:41 AM	IST-RF6													0.0305	0.0363	76.6		
10/12/2016	10:50:25 AM	IST-RF6													0.0303	0.0366	76.0		
10/12/2016	10:47:45 AM	SS-390 BD													0.0778	0.0857	75.5		
10/12/2016	10:45:28 AM	KB 380 CH													0.190	0.0757	85.6		
10/12/2016	10:40:55 AM	RF6													0.0295	0.0354	76.4		
10/12/2016	10:09:18 AM	TRIALCD													0.0142	0.00771	76.6		
10/12/2016	12:15:59 AM	DCM19 RF													0.0587	0.0221	85.4		
10/12/2016	12:14:38 AM	DCM14 3													0.0595	0.0222	85.3		
10/12/2016	12:13:15 AM	DCM7 047													0.0601	0.0223	85.4		
10/12/2016	12:11:47 AM	DCM6 SE													0.0603	0.0233	85.2		
10/12/2016	12:10:26 AM	DCM5 405													0.0598	0.0228	85.2		
10/12/2016	12:08:54 AM	DCM21 SE													0.0256	0.0422	77.1		
10/12/2016	12:03:20 AM	DCM18 24													0.0288	0.0337	76.4		
10/12/2016	12:01:56 AM	DCM17 24													0.0295	0.0341	76.6		
10/12/2016	12:01:16 AM	DCM16 41													0.0288	0.0352	76.6		
10/11/2016	11:59:15 PM	DCM15 2													0.0290	0.0346	76.5		
10/11/2016	11:55:18 PM	DCM10 24224026 3RD			SS-390 BD	AI100New	16.90	0.750	4.41	0.188	0.463	0.0405	0.0428	0.731	0.0544	<0.00050	0.0261	0.0304	76.4
10/11/2016	11:52:29 PM	DCM8 24224026 3RD	DOWN		SS-390 BD	AI100New	16.45	0.745	4.51	0.200	0.394	0.0428	0.0319	0.718	0.0560	<0.00050	0.0245	0.0373	76.8
10/11/2016	11:49:26 PM	DCM2 1130-034-0562 3RD			SS-390 BD	AI100New	16.17	0.761	4.49	0.199	0.465	0.0424	0.0439	0.786	0.0560	0.00063	0.0291	0.0331	76.9
10/11/2016	11:47:25 PM	DCM1 24224026 3RD			SS-390 BD	AI100New	16.68	0.772	4.38	0.194	0.455	0.0419	0.0418	0.746	0.0551	<0.00050	0.0269	0.0298	76.6
10/11/2016	11:39:43 PM	RF=7 3RD			SS-390 BD	AI100New	16.38	0.753	4.53	0.194	0.474	0.0412	0.0455	0.739	0.0556	0.00072	0.0279	0.0322	76.7
10/11/2016	11:36:56 PM	RF=6 3RD			SS-390 BD	AI100New	16.57	0.751	4.54	0.195	0.456	0.0415	0.0453	0.749	0.0553	<0.00050	0.0283	0.0329	76.5
10/11/2016	11:35:28 PM	RF=8 3RD			KB 380 CH	AI100New	8.58	0.823	3.11	0.252	<0.00100	0.0508	0.0678	1.45	0.0455	0.00064	0.0589	0.0218	85.5
10/11/2016	11:34:05 PM	RF=4 3RD			KB 380 CH	AI100New	8.60	0.826	3.14	0.245	0.00664	0.0479	0.0668	1.51	0.0432	<0.00050	0.0577	0.0221	85.4
10/11/2016	9:46:30 PM	MACH 19 2ND 7L328			KB 380 CH	AI100New	9.11	0.894	3.25	0.262	0.00615	0.0483	0.0725	1.62	0.0452	0.00106	0.0656	0.0241	84.6
10/11/2016	9:44:48 PM	MACH 14 2ND 3778-07			KB 380 CH	AI100New	9.11	0.888	3.22	0.259	0.00207	0.0497	0.0705	1.55	0.0449	0.00117	0.0638	0.0232	84.7

102761 Analyses 1 marked analyses SUPER Num Basic Terminal:1

2:12 PM 8/6/2018



DIA 2000 SE - Analyses management system

File Edit View Formats Extras Basic files Configuration Help

Files Print Statistics Export Filter View Details Login Help Home Web

Standard (no Selection) Start

Date	Time	SampleNo	Comment	Quality	Method	Si	Fe	Cu	Mn	Mg	Cr	Ni	Zn	Ti	Cd	Pb	Sn	Al	SF
10/12/2016	12:47:20 PM	40915	INCOMINI KB 380 CH		AI100New	8.74	0.908	3.42	0.247	0.00599	0.0470	0.0739	1.46	0.0447	<0.00050	0.0595	0.0321	85.0	
10/12/2016	12:07:47 PM	IST-M-19-328	KB 380 CH		AI100New	8.68	0.931	3.32	0.251	0.0121	0.0506	0.0752	1.58	0.0465	0.00076	0.0620	0.0330	85.0	
10/12/2016	12:05:40 PM	IST-M-14-37778-07	KB 380 CH		AI100New	8.76	0.940	3.31	0.255	0.00736	0.0514	0.0755	1.57	0.0457	0.00058	0.0610	0.0325	84.9	
10/12/2016	12:03:03 PM	IST-M-7-2990	KB 380 CH		AI100New	8.88	0.955	3.40	0.255	0.0116	0.0509	0.0776	1.60	0.0444	0.00062	0.0643	0.0341	84.6	
10/12/2016	12:00:46 PM	IST-M-6-90-BE	KB 380 CH		AI100New	8.84	0.952	3.37	0.249	<0.00100	0.0516	0.0768	1.54	0.0460	0.00091	0.0612	0.0328	84.8	
10/12/2016	11:58:35 AM	IST-M-5-40566-07	KB 380 CH		AI100New	8.70	0.931	3.34	0.249	0.00365	0.0499	0.0763	1.57	0.0460	0.00069	0.0626	0.0334	84.9	
10/12/2016	11:56:14 AM	IST-M-21-...	MACH-2/SS-390 BD		AI100New	15.95	0.857	4.74	0.247	0.276	0.0500	0.0361	0.780	0.0546	<0.00050	0.0264	0.0494	76.9	
10/12/2016	11:53:50 AM	IST-M-18-242664-R																	
10/12/2016	11:49:37 AM	IST-M-17-1650																	
10/12/2016	11:45:11 AM	IST-M-16-4180-034-05																	
10/12/2016	11:42:36 AM	IST-M-15-8344																	
10/12/2016	11:34:14 AM	IST-M-10-4026																	
10/12/2016	11:32:07 AM	IST-M-9-4026																	
10/12/2016	11:29:32 AM	IST-M-2-1130-034-056																	
10/12/2016	11:26:26 AM																		
10/12/2016	11:23:53 AM																		
10/12/2016	11:21:52 AM	IST-RF4																	
10/12/2016	11:19:44 AM	IST-RF7																	
10/12/2016	11:17:41 AM	IST RF6																	
10/12/2016	10:50:25 AM	IST-RF6																	
10/12/2016	10:47:45 AM	SS-390 BD																	
10/12/2016	10:45:28 AM	KB 380 CH																	
10/12/2016	10:40:55 AM	RF6																	
10/12/2016	10:09:18 AM	TRIALCD																	
10/12/2016	12:15:59 AM	DCM19 RFBC3P7L3284																	
10/12/2016	12:14:38 AM	DCM14 37778-07 3R																	
10/12/2016	12:13:15 AM	DCM7 04752990AB 3R																	
10/12/2016	12:11:47 AM	DCM6 SET-UP 3RD																	
10/12/2016	12:10:26 AM	DCM5 40566-07 3RD																	
10/12/2016	12:08:54 AM	DCM21 SET-UP 3RD																	
10/12/2016	12:03:20 AM	DCM18 242664R 3R																	
10/12/2016	12:01:56 AM	DCM17 24231650 3R																	
10/12/2016	12:01:16 AM	DCM16 4180-034-0560																	
10/11/2016	11:59:15 PM	DCM15 24269344R 3RD																	
10/11/2016	11:55:18 PM	DCM10 24224026 3RD																	
10/11/2016	11:52:29 PM	DCM8 24224026 3RD	DOWN.		SS-390 BD	AI100New	16.45	0.745	4.51	0.200	0.394	0.0428	0.0319	0.718	0.0560	<0.00050	0.0261	0.0304	76.4
10/11/2016	11:49:26 PM	DCM2 1130-034-0562 3RD			SS-390 BD	AI100New	16.17	0.761	4.49	0.199	0.465	0.0424	0.0439	0.786	0.0560	0.00063	0.0291	0.0331	76.9
10/11/2016	11:47:25 PM	DCM1 24224026 3RD			SS-390 BD	AI100New	16.68	0.772	4.38	0.194	0.455	0.0419	0.0418	0.746	0.0551	<0.00050	0.0269	0.0298	76.6
10/11/2016	11:39:43 PM	RF=7 3RD			SS-390 BD	AI100New	16.38	0.753	4.53	0.194	0.474	0.0412	0.0455	0.739	0.0556	0.00072	0.0279	0.0322	76.7
10/11/2016	11:36:56 PM	RF=6 3RD			SS-390 BD	AI100New	16.57	0.751	4.54	0.195	0.456	0.0415	0.0453	0.749	0.0553	<0.00050	0.0283	0.0329	76.5
10/11/2016	11:35:28 PM	RF=8 3RD			KB 380 CH	AI100New	8.58	0.823	3.11	0.252	<0.00100	0.0508	0.0678	1.45	0.0455	0.00064	0.0589	0.0218	85.5
10/11/2016	11:34:05 PM	RF=4 3RD			KB 380 CH	AI100New	8.60	0.826	3.14	0.245	0.00664	0.0479	0.0668	1.51	0.0432	<0.00050	0.0577	0.0221	85.4
10/11/2016	9:46:30 PM	MACH 19 2ND 7L328			KB 380 CH	AI100New	9.11	0.894	3.25	0.262	0.00615	0.0483	0.0725	1.62	0.0452	0.00106	0.0656	0.0241	84.6
10/11/2016	9:44:48 PM	MACH 14 2ND 3778-07			KB 380 CH	AI100New	9.11	0.888	3.22	0.259	0.00207	0.0497	0.0705	1.55	0.0449	0.00117	0.0638	0.0232	84.7

102761 Analyses 1 marked analyses SUPER Num Basic Terminal:1

2:12 PM 8/6/2018

DIA 2000 SE - Analyses management system

File Edit View Formats Extras Basic files Configuration Help

Files Print Statistics Export Filter View Details Login Help Home Web

Standard [no Selection] Start

Date	Time	SampleNo	Comment	Quality	Methode	Si	Fe	Cu	Mn	Mg	Cr	Ni	Zn	Ti	Cd	Pb	Sn	Al	SF
10/12/2016	12:47:20 PM	40915	INCOMINI KB 380 CH		AI100New	8.74	0.908	3.42	0.247	0.00599	0.0470	0.0739	1.46	0.0447	<0.00050	0.0595	0.0321	85.0	
10/12/2016	12:07:47 PM	IST-M-19-328	KB 380 CH		AI100New	8.68	0.931	3.32	0.251	0.0121	0.0506	0.0752	1.58	0.0465	0.00076	0.0620	0.0330	85.0	
10/12/2016	12:05:40 PM	IST-M-14-37778-07	KB 380 CH		AI100New	8.76	0.940	3.31	0.255	0.00736	0.0514	0.0755	1.57	0.0457	0.00058	0.0610	0.0325	84.9	
10/12/2016	12:03:03 PM	IST-M-7-297														0.0643	0.0341	84.6	
10/12/2016	12:00:46 PM	IST-M-6-4														0.0612	0.0328	84.8	
10/12/2016	11:58:35 AM	IST-M-5-4														0.0626	0.0334	84.9	
10/12/2016	11:56:14 AM	IST-M-21-4														0.0264	0.0494	76.9	
10/12/2016	11:53:50 AM	IST-M-18-4														0.0297	0.0373	76.0	
10/12/2016	11:49:37 AM	IST-M-17-4														0.0293	0.0360	76.1	
10/12/2016	11:45:11 AM	IST-M-16-4														0.0306	0.0366	77.6	
10/12/2016	11:42:36 AM	IBST-M-15-4														0.0302	0.0366	76.5	
10/12/2016	11:34:14 AM	IST-M-10-4														0.0307	0.0348	76.1	
10/12/2016	11:32:07 AM	IST-M-9-4														0.0270	0.0402	76.9	
10/12/2016	11:29:32 AM	IST-M-2-11														0.0309	0.0356	76.6	
10/12/2016	11:26:26 AM															0.0294	0.0359	77.0	
10/12/2016	11:23:53 AM															0.0637	0.0338	85.0	
10/12/2016	11:21:52 AM	IST-RF4														0.0652	0.0334	84.6	
10/12/2016	11:19:44 AM	IST-RF7														0.0314	0.0364	76.1	
10/12/2016	11:17:41 AM	IST RF6														0.0305	0.0363	76.6	
10/12/2016	10:50:25 AM	IST-RF6														0.0303	0.0366	76.0	
10/12/2016	10:47:45 AM	SS-390 BD														0.0778	0.0857	75.5	
10/12/2016	10:45:28 AM	KB 380 CH														0.190	0.0757	85.6	
10/12/2016	10:40:55 AM	RF6														0.0295	0.0354	76.4	
10/12/2016	10:09:18 AM	TRIALCO														0.0142	0.00771	76.6	
10/12/2016	12:15:59 AM	DCM19 RF8														0.0587	0.0221	85.4	
10/12/2016	12:14:38 AM	DCM14 377														0.0595	0.0222	85.3	
10/12/2016	12:13:15 AM	DCM7 0475														0.0601	0.0223	85.4	
10/12/2016	12:11:47 AM	DCM6 SET														0.0603	0.0233	85.2	
10/12/2016	12:10:26 AM	DCM5 4058														0.0598	0.0228	85.2	
10/12/2016	12:08:54 AM	DCM21 SET														0.0256	0.0422	77.1	
10/12/2016	12:03:20 AM	DCM18 242														0.0288	0.0337	76.4	
10/12/2016	12:01:56 AM	DCM17 242														0.0295	0.0341	76.6	
10/12/2016	12:01:16 AM	DCM16 418														0.0288	0.0352	76.6	
10/11/2016	11:59:15 PM	DCM15 242														0.0290	0.0346	76.5	
10/11/2016	11:55:18 PM	DCM10 242														0.0261	0.0304	76.4	
10/11/2016	11:52:29 PM	DCM8 242														0.0245	0.0373	76.8	
10/11/2016	11:49:26 PM	DCM2 1130														0.0291	0.0331	76.9	
10/11/2016	11:47:25 PM	DCM1 24224026	3RD.		SS-390 BD	AI100New	16.68	0.772	4.38	0.194	0.455	0.0419	0.0418	0.746	0.0551	<0.00050	0.0269	0.0298	76.6
10/11/2016	11:39:43 PM	RF=7	3RD		SS-390 BD	AI100New	16.38	0.753	4.53	0.194	0.474	0.0412	0.0455	0.739	0.0556	0.00072	0.0279	0.0322	76.7
10/11/2016	11:36:56 PM	RF=6	3RD		SS-390 BD	AI100New	16.57	0.751	4.54	0.195	0.456	0.0415	0.0453	0.749	0.0553	<0.00050	0.0283	0.0329	76.5
10/11/2016	11:35:28 PM	RF=8	3RD		KB 380 CH	AI100New	8.58	0.823	3.11	0.252	<0.00100	0.0508	0.0678	1.45	0.0455	0.00064	0.0589	0.0218	85.5
10/11/2016	11:34:05 PM	RF=4	3RD		KB 380 CH	AI100New	8.60	0.826	3.14	0.245	0.00664	0.0479	0.0668	1.51	0.0432	<0.00050	0.0577	0.0221	85.4
10/11/2016	9:46:30 PM	MACH 19 2ND 7L328			KB 380 CH	AI100New	9.11	0.894	3.25	0.262	0.00615	0.0483	0.0725	1.62	0.0452	0.00106	0.0656	0.0241	84.6
10/11/2016	9:44:48 PM	MACH 14 2ND 3778-07			KB 380 CH	AI100New	9.11	0.888	3.22	0.259	0.00207	0.0497	0.0705	1.55	0.0449	0.00117	0.0638	0.0232	84.7

102761 Analyses 1 marked analyses SUPER Num Basic Terminal:1

2:13 PM 8/6/2018

DIA 2000 SE - Analyses management system

File Edit View Formats Extras Basic files Configuration Help

Files Print Statistics Export Filter View Details Login Help Home Web

Standard (no Selection) Start

Date	Time	SampleNo	Comment	Quality	Method	Si	Fe	Cu	Mn	Mg	Cr	Ni	Zn	Ti	Cd	Pb	Sn	Al	SF	
10/12/2016	12:47:20 PM	40915	INCOMIN KB 380 CH		AI100New	8.74	0.908	3.42	0.247	0.00599	0.0470	0.0739	1.46	0.0447	<0.00050	0.0595	0.0321	85.0		
10/12/2016	12:07:47 PM	IST-M-19-328	KB 380 CH		AI100New	8.69	0.931	3.32	0.251	0.0121	0.0506	0.0752	1.58	0.0465	0.00076	0.0620	0.0330	85.0		
10/12/2016	12:05:40 PM	IST-M-14-37778-07	KB 380 CH		AI100New	8.76	0.940	3.31	0.255	0.00736	0.0514	0.0755	1.57	0.0457	0.00058	0.0610	0.0325	84.9		
10/12/2016	12:03:03 PM	IST-M-7-2990	KB 380 CH		AI100New	8.88	0.955	3.40	0.255	0.0116	0.0509	0.0776	1.60	0.0444	0.00062	0.0643	0.0341	84.6		
10/12/2016	12:00:46 PM	IST-M-6-90-BE	KB 380 CH		AI100New	8.84	0.952	3.37	0.249	<0.00100	0.0516	0.0768	1.54	0.0460	0.00091	0.0612	0.0328	84.8		
10/12/2016	11:58:35 AM	IST-M-5-40566-07	KB 380 CH		AI100New	8.70	0.931	3.34	0.249	0.00365	0.0499	0.0763	1.57	0.0460	0.00069	0.0626	0.0334	84.9		
10/12/2016	11:56:14 AM	IST-M-21...	MACH-2 SS-390 BD		AI100New	15.95	0.857	4.74	0.247	0.276	0.0500	0.0361	0.780	0.0646	<0.00050	0.0264	0.0494	76.9		
10/12/2016	11:53:50 AM	IST-M-18-24264-R												0.0625	<0.00050	0.0297	0.0373	76.0		
10/12/2016	11:49:37 AM	IST-M-17-1650												0.0620	<0.00053	0.0293	0.0360	76.1		
10/12/2016	11:45:11 AM	IST-M-16-4180-034-0560												0.0644	<0.00050	0.0306	0.0366	77.6		
10/12/2016	11:42:36 AM	IBST-M-15-8344												0.0632	<0.00056	0.0302	0.0366	76.5		
10/12/2016	11:34:14 AM	IST-M-10-4026												0.0621	<0.00050	0.0307	0.0348	76.1		
10/12/2016	11:32:07 AM	IST-M-9-4026												0.0644	<0.00050	0.0270	0.0402	76.9		
10/12/2016	11:29:32 AM	IST-M-2-1130-034-0562												0.0632	<0.00050	0.0309	0.0356	76.6		
10/12/2016	11:26:26 AM													0.0635	<0.00050	0.0294	0.0359	77.0		
10/12/2016	11:23:53 AM													0.0471	<0.00050	0.0637	0.0338	85.0		
10/12/2016	11:21:52 AM	IST-RF4												0.0456	<0.00069	0.0652	0.0334	84.6		
10/12/2016	11:19:44 AM	IST-RF7												0.0626	<0.00050	0.0314	0.0364	76.1		
10/12/2016	11:17:41 AM	IST-RF6												0.0636	<0.00050	0.0305	0.0363	76.6		
10/12/2016	10:50:25 AM	IST-RF6												0.0627	<0.00050	0.0303	0.0366	76.0		
10/12/2016	10:47:45 AM	SS-390 BD												0.0828	<0.00050	0.0778	0.0857	75.5		
10/12/2016	10:45:28 AM	KB 380 CH												0.0336	<0.00050	0.190	0.0757	85.6		
10/12/2016	10:40:55 AM	RF6												0.0566	<0.00050	0.0295	0.0354	76.4		
10/12/2016	10:09:18 AM	TRIALCD												0.0974	<0.00050	0.0142	0.00771	76.6		
10/12/2016	12:15:59 AM	DCM19 RFBC3P7L328AE 3RD												0.0436	0.00094	0.0587	0.0221	85.4		
10/12/2016	12:14:38 AM	DCM14 37778-07 3RD												0.0433	0.00105	0.0595	0.0222	85.3		
10/12/2016	12:13:15 AM	DCM7 04752990AB 3RD												0.0440	0.00063	0.0601	0.0223	85.4		
10/12/2016	12:11:47 AM	DCM6 SET-UP 3RD												0.0427	0.00085	0.0603	0.0233	85.2		
10/12/2016	12:10:26 AM	DCM5 40566-07 3RD												0.0435	0.00068	0.0598	0.0228	85.2		
10/12/2016	12:08:54 AM	DCM21 SET-UP 3RD												0.0575	0.00066	0.0256	0.0422	77.1		
10/12/2016	12:03:20 AM	DCM18 242664R 3RD												0.0558	<0.00050	0.0288	0.0337	76.4		
10/12/2016	12:01:56 AM	DCM17 24231650 3RD												0.0559	<0.00050	0.0295	0.0341	76.6		
10/12/2016	12:01:16 AM	DCM16 4180-034-0560 3RD												0.0560	0.00066	0.0288	0.0352	76.6		
10/11/2016	11:59:15 PM	DCM15 24268344R 3RD												0.0559	<0.00050	0.0290	0.0346	76.5		
10/11/2016	11:55:18 PM	DCM10 24224026 3RD												0.0544	<0.00050	0.0261	0.0304	76.4		
10/11/2016	11:52:29 PM	DCM8 24224026 3RD	DOWN		SS-390 BD	AI100New	16.45	0.745	4.51	0.200	0.394	0.0428	0.0319	0.718	0.0560	<0.00050	0.0245	0.0373	76.8	
10/11/2016	11:49:26 PM	DCM2 1130-034-0562 3RD			SS-390 BD	AI100New	16.17	0.761	4.49	0.199	0.465	0.0424	0.0439	0.786	0.0560	0.00063	0.0291	0.0331	76.9	
10/11/2016	11:47:25 PM	DCM1 24224026 3RD			SS-390 BD	AI100New	16.68	0.772	4.38	0.194	0.455	0.0419	0.0418	0.746	0.0551	<0.00050	0.0269	0.0298	76.6	
10/11/2016	11:39:43 PM	RF=7 3RD			SS-390 BD	AI100New	16.38	0.753	4.53	0.194	0.474	0.0412	0.0455	0.739	0.0556	0.00072	0.0279	0.0322	76.7	
10/11/2016	11:36:56 PM	RF=6 3RD			SS-390 BD	AI100New	16.57	0.751	4.54	0.195	0.456	0.0415	0.0453	0.749	0.0553	<0.00050	0.0283	0.0329	76.5	
10/11/2016	11:35:28 PM	RF=8 3RD			KB 380 CH	AI100New	8.58	0.823	3.11	0.252	<0.00100	0.0508	0.0678	1.45	0.0455	0.00064	0.0589	0.0218	85.5	
10/11/2016	11:34:05 PM	RF=4 3RD			KB 380 CH	AI100New	8.60	0.826	3.14	0.245	0.00664	0.0479	0.0668	1.51	0.0432	<0.00050	0.0577	0.0221	85.4	
10/11/2016	9:46:30 PM	MACH 19 2ND 7L328			KB 380 CH	AI100New	9.11	0.894	3.25	0.262	0.00615	0.0483	0.0725	1.62	0.0452	0.00106	0.0656	0.0241	84.6	
10/11/2016	9:44:48 PM	MACH 14 2ND 3778-07			KB 380 CH	AI100New	9.11	0.888	3.22	0.259	0.00207	0.0497	0.0705	1.55	0.0449	0.00117	0.0638	0.0232	84.7	

102761 Analyses 1 marked analyses SUPER Num Basic Terminal1

2:14 PM 8/6/2018

102761 Analyses 1 marked analyses SUPER Num Basic Terminal:1 2:15 PM 8/6/2018

DIA 2000 SE - Analyses management system

File Edit View Formats Extras Basic files Configuration Help

Files Print Statistics Export Filter View Details Login Help Home Web

Standard [no Selection] Start

Date	Time	SampleNo	Comment	Quality	Method	Si	Fe	Cu	Mn	Mg	Cr	Ni	Zn	Ti	Cd	Pb	Sn	Al	SF	
10/12/2016	12:07:47 PM	40915	INCOMINI KB 380 CH		AI100New	8.74	0.908	3.42	0.247	0.00599	0.0470	0.0739	1.46	0.0447	<0.00050	0.0595	0.0321	85.0		
10/12/2016	12:07:47 PM	IST-M-19-328		KB 380 CH	AI100New	8.69	0.931	3.32	0.251	0.0121	0.0506	0.0752	1.58	0.0465	0.00076	0.0620	0.0330	85.0		
10/12/2016	12:05:40 PM	IST-M-14-37778-07		KB 380 CH	AI100New	8.76	0.940	3.31	0.255	0.00736	0.0514	0.0755	1.57	0.0457	0.00058	0.0610	0.0325	84.9		
10/12/2016	12:03:03 PM	IST-M-7-2990		KB 380 CH	AI100New	8.88	0.955	3.40	0.255	0.0116	0.0509	0.0776	1.60	0.0444	0.00062	0.0643	0.0341	84.6		
10/12/2016	12:00:46 PM	IST-M-6-90-BE		KB 380 CH	AI100New	8.84	0.952	3.37	0.249	<0.00100	0.0516	0.0768	1.54	0.0460	0.00091	0.0612	0.0328	84.8		
10/12/2016	11:58:35 AM	IST-M-5-40566-07		KB 380 CH	AI100New	8.70	0.931	3.34	0.248	0.00965	0.0493	0.0763	1.57	0.0460	0.00069	0.0626	0.0334	84.9		
10/12/2016	11:56:14 AM	IST-M-21-...													0.00050	0.0264	0.0494	76.9		
10/12/2016	11:53:50 AM	IST-M-18-242664													0.00050	0.0297	0.0373	76.0		
10/12/2016	11:49:37 AM	IST-M-17-1650													0.00053	0.0293	0.0360	76.1		
10/12/2016	11:45:11 AM	IST-M-16-4180-034													0.00050	0.0306	0.0366	77.6		
10/12/2016	11:42:36 AM	IST-M-15-8344													0.00056	0.0302	0.0366	76.5		
10/12/2016	11:34:14 AM	IST-M-10-4026													0.00050	0.0307	0.0348	76.1		
10/12/2016	11:32:07 AM	IST-M-9-4026													0.00050	0.0270	0.0402	76.9		
10/12/2016	11:29:32 AM	IST-M-2-1130-034													0.00050	0.0309	0.0356	76.6		
10/12/2016	11:26:26 AM														0.00050	0.0294	0.0359	77.0		
10/12/2016	11:23:53 AM														0.00050	0.0637	0.0338	85.0		
10/12/2016	11:21:52 AM	IST-RF4													0.00069	0.0652	0.0334	84.6		
10/12/2016	11:19:44 AM	IST-RF7													0.00050	0.0314	0.0364	76.1		
10/12/2016	11:17:41 AM	IST RF6													0.00050	0.0305	0.0363	76.6		
10/12/2016	10:50:25 AM	IST-RF6													0.00050	0.0303	0.0366	76.0		
10/12/2016	10:47:45 AM	SS-390 BD													0.00050	0.0778	0.0857	75.5		
10/12/2016	10:45:28 AM	KB 380 CH													0.00050	0.190	0.0757	85.6		
10/12/2016	10:40:55 AM	RF6													0.00050	0.0295	0.0354	76.4		
10/12/2016	10:09:18 AM	TRIALCD													0.00050	0.0142	0.00771	76.6		
10/12/2016	12:15:59 AM	DCM19 RFBC3P7L													0.00094	0.0587	0.0221	85.4		
10/12/2016	12:14:38 AM	DCM14 37778-07													0.00105	0.0595	0.0222	85.3		
10/12/2016	12:13:15 AM	DCM7 0475299048													0.00063	0.0601	0.0223	85.4		
10/12/2016	12:11:47 AM	DCM6 SET-UP													0.00085	0.0603	0.0233	85.2		
10/12/2016	12:10:26 AM	DCM5 40566-07													0.00068	0.0598	0.0228	85.2		
10/12/2016	12:08:54 AM	DCM21 SET-UP													0.00066	0.0256	0.0422	77.1		
10/12/2016	12:03:20 AM	DCM18 242664R													0.00050	0.0288	0.0337	76.4		
10/12/2016	12:01:56 AM	DCM17 24231650													0.00050	0.0295	0.0341	76.6		
10/12/2016	12:01:16 AM	DCM16 4180-0340													0.00066	0.0288	0.0352	76.6		
10/11/2016	11:59:15 PM	DCM15 24268344R													0.00050	0.0290	0.0346	76.5		
10/11/2016	11:55:18 PM	DCM10 24224026	3RD.		SS-390 BD	AI100New	16.30	0.750	4.41	0.185	0.463	0.0405	0.0428	0.731	0.0544	<0.00050	0.0261	0.0304	76.4	
10/11/2016	11:52:29 PM	DCM8 24224026	3RD.	DOWN.	SS-390 BD	AI100New	16.45	0.745	4.51	0.200	0.394	0.0428	0.0319	0.718	0.0560	<0.00050	0.0245	0.0373	76.8	
10/11/2016	11:49:26 PM	DCM2 1130-034-0562	3RD.		SS-390 BD	AI100New	16.17	0.761	4.49	0.199	0.465	0.0424	0.0439	0.786	0.0560	0.00063	0.0291	0.0331	76.9	
10/11/2016	11:47:25 PM	DCM1 24224026	3RD.		SS-390 BD	AI100New	16.68	0.772	4.38	0.194	0.455	0.0419	0.0418	0.746	0.0551	<0.00050	0.0269	0.0298	76.6	
10/11/2016	11:39:43 PM	RF=7	3RD		SS-390 BD	AI100New	16.38	0.753	4.53	0.194	0.474	0.0412	0.0455	0.739	0.0556	0.00072	0.0279	0.0322	76.7	
10/11/2016	11:36:56 PM	RF=6	3RD		SS-390 BD	AI100New	16.57	0.751	4.54	0.195	0.456	0.0415	0.0453	0.749	0.0553	<0.00050	0.0283	0.0329	76.5	
10/11/2016	11:35:28 PM	RF=8	3RD		KB 380 CH	AI100New	8.58	0.823	3.11	0.252	<0.00100	0.0508	0.0678	1.45	0.0455	0.00064	0.0589	0.0218	85.5	
10/11/2016	11:34:05 PM	RF=4	3RD		KB 380 CH	AI100New	8.60	0.826	3.14	0.245	0.00664	0.0479	0.0668	1.51	0.0432	<0.00050	0.0577	0.0221	85.4	
10/11/2016	9:46:30 PM	MACH 19 2ND 7L328			KB 380 CH	AI100New	9.11	0.894	3.25	0.262	0.00615	0.0483	0.0725	1.62	0.0452	0.00106	0.0656	0.0241	84.6	
10/11/2016	9:44:48 PM	MACH 14 2ND 3778-07			KB 380 CH	AI100New	9.11	0.888	3.22	0.259	0.00207	0.0497	0.0705	1.55	0.0449	0.00117	0.0638	0.0232	84.7	

102761 Analyses 1 marked analyses SUPER Num Basic Terminal:1

2:15 PM 8/6/2018

DIA 2000 SE - Analyses management system

File Edit View Formats Extras Basic files Configuration Help

Files Print Statistics Export Filter View Details Login Help Home Web

Standard (no Selection) Start

Date	Time	SampleNo	Comment	Quality	Method	Si	Fe	Cu	Mn	Mg	Cr	Ni	Zn	Ti	Cd	Pb	Sn	Al	SF	
10/12/2016	12:47:20 PM	40915	INCOMINI	KB 380 CH	AI100New	8.74	0.908	3.42	0.247	0.00599	0.0470	0.0739	1.46	0.0447	<0.00050	0.0595	0.0321	85.0		
10/12/2016	12:07:47 PM	IST-M-19-328		KB 380 CH	AI100New	8.69	0.931	3.32	0.251	0.0121	0.0506	0.0752	1.58	0.0465	0.00076	0.0620	0.0330	85.0		
10/12/2016	12:05:40 PM	IST-M-14-37778-07		KB 380 CH	AI100New	8.76	0.940	3.31	0.255	0.00736	0.0514	0.0755	1.57	0.0457	0.00058	0.0610	0.0325	84.9		
10/12/2016	12:03:03 PM	IST-M-7-2990		KB 380 CH	AI100New	8.88	0.955	3.40	0.255	0.0116	0.0509	0.0776	1.60	0.0444	0.00062	0.0643	0.0341	84.6		
10/12/2016	12:00:46 PM	IST-M-6-90-BE		KB 380 CH	AI100New	8.84	0.952	3.37	0.249	<0.00100	0.0516	0.0768	1.54	0.0460	0.00091	0.0612	0.0328	84.8		
10/12/2016	11:58:35 AM	IST-M-5-40566-07		KB 380 CH	AI100New	8.70	0.931	3.34	0.249	0.00965	0.0499	0.0763	1.57	0.0460	0.00069	0.0626	0.0334	84.9		
10/12/2016	11:56:14 AM	IST-M-21-...		MACH-2	SS-390 BD	AI100New	15.95	0.857	4.74	0.247	0.276	0.0500	0.0361	0.780	0.0646	<0.00050	0.0264	0.0494	76.9	
10/12/2016	11:53:50 AM	IST-M-18-242664-R		SS-390 BD	AI100New	16.83	0.850	4.62	0.215	0.524	0.0460	0.0474	0.777	0.0625	<0.00050	0.0297	0.0373	76.0		
10/12/2016	11:49:37 AM	IST-M-17-1650		SS-390 BD	AI100New	16.79	0.838	4.59	0.212	0.505	0.0452	0.0468	0.751	0.0620	<0.00053	0.0293	0.0360	76.1		
10/12/2016	11:45:11 AM	IST-M-16-4180-034-0560		MACH-11	SS-390 BD	AI100New	15.00	0.880	4.80	0.213	0.510	0.0475	0.0505	0.802	0.0644	<0.00050	0.0306	0.0366	77.6	
10/12/2016	11:42:36 AM	IBST-M-15-8344		SS-390 BD	AI100New	16.20	0.850	4.74	0.208	0.500	0.0457	0.0507	0.771	0.0632	<0.00056	0.0302	0.0366	76.5		
10/12/2016	11:34:14 AM	IST-M-10-4026		SS-390 BD	AI100New	16.66	0.849	4.71	0.207	0.521	0.0452	0.0510	0.773	0.0621	<0.00050	0.0307	0.0348	76.1		
10/12/2016	11:32:07 AM	IST-M-9-4026		MACH-D	SS-390 BD	AI100New	15.95	0.845	4.65	0.220	0.426	0.0477	0.0356	0.749	0.0644	<0.00050	0.0270	0.0402	76.9	
10/12/2016	11:29:32 AM	IST-M-2-1130-034-0562		SS									0.0473	0.811	0.0632	<0.00050	0.0309	0.0356	76.6	
10/12/2016	11:26:26 AM	IST-M-1-SS		SS									0.0455	0.792	0.0635	<0.00050	0.0294	0.0359	77.0	
10/12/2016	11:23:53 AM	IST-RF8 KB		KB									0.0760	1.58	0.0471	<0.00050	0.0637	0.0338	85.0	
10/12/2016	11:21:52 AM	IST-RF4		KB									0.0774	1.59	0.0456	0.00069	0.0652	0.0334	84.6	
10/12/2016	11:19:44 AM	IST-RF7		SS									0.0507	0.779	0.0626	<0.00050	0.0314	0.0364	76.1	
10/12/2016	11:17:41 AM	IST-RF6		SS									0.0496	0.787	0.0636	<0.00050	0.0305	0.0363	76.6	
10/12/2016	10:50:25 AM	IST-RF6		SS									0.0488	0.778	0.0627	<0.00050	0.0303	0.0366	76.0	
10/12/2016	10:47:45 AM	SS-390 BD											0.117	0.449	0.0828	<0.00050	0.0778	0.0857	75.5	
10/12/2016	10:45:28 AM	KB 380 CH											0.109	0.870	0.0336	<0.00050	0.180	0.0757	85.6	
10/12/2016	10:40:55 AM	RF6		SS									0.0464	0.767	0.0566	<0.00050	0.0295	0.0354	76.4	
10/12/2016	10:09:18 AM	TRIALCD		HT# J10A SS									0.0190	0.654	0.0974	<0.00050	0.0142	0.00771	76.6	
10/12/2016	12:15:59 AM	DCM19 RF8C3P7L328AE 3RD		KB									0.0682	1.47	0.0436	0.00094	0.0587	0.0221	85.4	
10/12/2016	12:14:38 AM	DCM14 37778-07 3RD		KB									0.0690	1.47	0.0433	0.00105	0.0595	0.0222	85.3	
10/12/2016	12:13:15 AM	DCM7 04752990AB 3RD		KB									0.0695	1.47	0.0440	0.00063	0.0601	0.0223	85.4	
10/12/2016	12:11:47 AM	DCM6 SET-UP 3RD		KB 380 CH	AI100New	8.79	0.875	3.21	0.254	<0.00100	0.0499	0.0701	1.46	0.0427	0.00085	0.0603	0.0233	85.2		
10/12/2016	12:10:26 AM	DCM5 40566-07 3RD		KB 380 CH	AI100New	8.75	0.857	3.17	0.252	0.00414	0.0486	0.0687	1.47	0.0435	0.00068	0.0598	0.0228	85.2		
10/12/2016	12:08:54 AM	DCM21 SET-UP 3RD		SS-390 BD	AI100New	16.14	0.768	4.54	0.221	0.332	0.0445	0.0356	0.738	0.0575	0.00066	0.0256	0.0422	77.1		
10/12/2016	12:03:20 AM	DCM18 242664R 3RD		SS-390 BD	AI100New	16.66	0.757	4.60	0.198	0.482	0.0413	0.0475	0.740	0.0558	<0.00050	0.0288	0.0337	76.4		
10/12/2016	12:01:56 AM	DCM17 24231650 3RD		SS-390 BD	AI100New	16.29	0.772	4.68	0.199	0.491	0.0419	0.0476	0.750	0.0559	<0.00050	0.0295	0.0341	76.6		
10/12/2016	12:01:16 AM	DCM16 4180-034-0560 3RD		SS-390 BD	AI100New	16.31	0.770	4.66	0.198	0.478	0.0419	0.0472	0.741	0.0560	0.00066	0.0288	0.0352	76.6		
10/11/2016	11:59:15 PM	DCM15 24269344R 3RD		SS-390 BD	AI100New	16.45	0.756	4.67	0.197	0.482	0.0415	0.0468	0.746	0.0559	<0.00050	0.0290	0.0346	76.5		
10/11/2016	11:55:18 PM	DCM10 24224026 3RD		SS-390 BD	AI100New	16.90	0.750	4.41	0.188	0.463	0.0405	0.0428	0.731	0.0544	<0.00050	0.0261	0.0304	76.4		
10/11/2016	11:52:29 PM	DCM8 24224026 3RD		SS-390 BD	AI100New	16.45	0.745	4.51	0.200	0.394	0.0428	0.0319	0.718	0.0560	<0.00050	0.0245	0.0373	76.8		
10/11/2016	11:49:26 PM	DCM2 1130-034-0562 3RD		SS-390 BD	AI100New	16.17	0.761	4.49	0.199	0.465	0.0424	0.0439	0.786	0.0560	0.00063	0.0291	0.0331	76.9		
10/11/2016	11:47:25 PM	DCM1 24224026 3RD		SS-390 BD	AI100New	16.68	0.772	4.38	0.194	0.455	0.0419	0.0418	0.746	0.0551	<0.00050	0.0269	0.0298	76.6		
10/11/2016	11:39:43 PM	RF=7 3RD		SS-390 BD	AI100New	16.38	0.753	4.53	0.194	0.474	0.0412	0.0455	0.739	0.0556	0.00072	0.0279	0.0322	76.7		
10/11/2016	11:36:56 PM	RF=6 3RD		SS-390 BD	AI100New	16.57	0.751	4.54	0.195	0.456	0.0415	0.0453	0.749	0.0553	<0.00050	0.0283	0.0329	76.5		
10/11/2016	11:35:28 PM	RF=8 3RD		KB 380 CH	AI100New	8.58	0.823	3.11	0.252	<0.00100	0.0508	0.0678	1.45	0.0455	0.00064	0.0589	0.0218	85.5		
10/11/2016	11:34:05 PM	RF=4 3RD		KB 380 CH	AI100New	8.60	0.826	3.14	0.245	0.00664	0.0479	0.0668	1.51	0.0432	<0.00050	0.0577	0.0221	85.4		
10/11/2016	9:46:30 PM	MACH 19 2ND 7L328		KB 380 CH	AI100New	9.11	0.894	3.25	0.262	0.00615	0.0483	0.0725	1.62	0.0452	0.00106	0.0656	0.0241	84.6		
10/11/2016	9:44:48 PM	MACH 14 2ND 3778-07		KB 380 CH	AI100New	9.11	0.888	3.22	0.259	0.00207	0.0497	0.0705	1.55	0.0449	0.00117	0.0638	0.0232	84.7		

102761 Analyses 1 marked analyses SUPER Num Basic Terminal:1

2:16 PM 8/6/2018



DIA 2000 SE - Analyses management system

File Edit View Formats Extras Basic files Configuration Help

Files Print Statistics Export Filter View Details Login Help Home Web

Standard [no Selection] Start

Date	Time	SampleNo	Comment	Quality	Method	Si	Fe	Cu	Mn	Mg	Cr	Ni	Zn	Ti	Cd	Pb	Sn	Al	SF	
10/12/2016	12:47:20 PM	40915	INCOMINI	KB 380 CH	AI100New	8.74	0.908	3.42	0.247	0.00599	0.0470	0.0739	1.46	0.0447	<0.00050	0.0595	0.0321	85.0		
10/12/2016	12:07:47 PM	IST-M-19-328		KB 380 CH	AI100New	8.69	0.931	3.32	0.251	0.0121	0.0506	0.0752	1.58	0.0465	0.00076	0.0620	0.0330	85.0		
10/12/2016	12:05:40 PM	IST-M-14-37778-07		KB 380 CH	AI100New	8.76	0.940	3.31	0.255	0.00736	0.0514	0.0755	1.57	0.0457	0.00058	0.0610	0.0325	84.9		
10/12/2016	12:03:03 PM	IST-M-7-2990		KB 380 CH	AI100New	8.88	0.955	3.40	0.255	0.0116	0.0509	0.0776	1.60	0.0444	0.00062	0.0643	0.0341	84.6		
10/12/2016	12:00:46 PM	IST-M-6-90-BE		KB 380 CH	AI100New	8.84	0.952	3.37	0.249	<0.00100	0.0516	0.0768	1.54	0.0460	0.00091	0.0612	0.0328	84.8		
10/12/2016	11:58:35 AM	IST-M-5-40566-07		KB 380 CH	AI100New	8.70	0.931	3.34	0.249	0.00965	0.0499	0.0763	1.57	0.0460	0.00069	0.0626	0.0334	84.9		
10/12/2016	11:56:14 AM	IST-M-21...		MACH-2	SS-390 BD	AI100New	15.95	0.857	4.74	0.247	0.276	0.0500	0.0361	0.780	0.0646	<0.00050	0.0264	0.0494	76.9	
10/12/2016	11:53:50 AM	IST-M-18-242664-R		SS-390 BD	AI100New	16.83	0.850	4.62	0.215	0.524	0.0460	0.0474	0.777	0.0625	<0.00050	0.0297	0.0373	76.0		
10/12/2016	11:49:37 AM	IST-M-17-1650		SS-390 BD	AI100New	16.79	0.838	4.59	0.212	0.505	0.0452	0.0468	0.751	0.0620	<0.00053	0.0293	0.0360	76.1		
10/12/2016	11:45:11 AM	IST-M-16-4180-034-0560		MACH-11	SS-390 BD	AI100New	15.00	0.880	4.80	0.213	0.510	0.0475	0.0505	0.802	0.0644	<0.00050	0.0306	0.0366	77.6	
10/12/2016	11:42:36 AM	IST-M-15-8344		SS-390 BD	AI100New	16.20	0.850	4.74	0.208	0.500	0.0457	0.0507	0.771	0.0632	<0.00056	0.0302	0.0366	76.5		
10/12/2016	11:34:14 AM	IST-M-10-4026		SS-390 BD	AI100New	16.66	0.849	4.71	0.207	0.521	0.0452	0.0510	0.773	0.0621	<0.00050	0.0307	0.0348	76.1		
10/12/2016	11:32:07 AM	IST-M-9-4026		MACH										0.749	0.0644	<0.00050	0.0270	0.0402	76.9	
10/12/2016	11:29:32 AM	IST-M-2-1130-034-0562												0.811	0.0632	<0.00050	0.0309	0.0356	76.6	
10/12/2016	11:26:26 AM	IST-M-1												0.792	0.0635	<0.00050	0.0294	0.0359	77.0	
10/12/2016	11:23:53 AM	IST-M-1												1.58	0.0471	<0.00050	0.0637	0.0338	85.0	
10/12/2016	11:21:52 AM	IST-M-4												1.59	0.0456	<0.00069	0.0652	0.0334	84.6	
10/12/2016	11:19:44 AM	IST-M-7												0.779	0.0626	<0.00050	0.0314	0.0364	76.1	
10/12/2016	11:17:41 AM	IST-M-6												0.787	0.0636	<0.00050	0.0305	0.0363	76.6	
10/12/2016	10:50:25 AM	IST-M-6												0.778	0.0627	<0.00050	0.0303	0.0366	76.0	
10/12/2016	10:47:45 AM	SS-390 BD												0.449	0.0828	<0.00050	0.0778	0.0857	75.5	
10/12/2016	10:45:28 AM	KB 380 CH												0.870	0.0336	<0.00050	0.180	0.0757	85.6	
10/12/2016	10:40:55 AM	RF6												0.767	0.0566	<0.00050	0.0295	0.0354	76.4	
10/12/2016	10:09:18 AM	TRIALCD		HT#										0.654	0.0974	<0.00050	0.0142	0.00771	76.6	
10/12/2016	12:15:59 AM	DCM19 RF8C3P7L328AE 3RD												1.47	0.0436	0.00094	0.0587	0.0221	85.4	
10/12/2016	12:14:38 AM	DCM14 37778-07 3RD												1.47	0.0433	0.00105	0.0595	0.0222	85.3	
10/12/2016	12:13:15 AM	DCM7 04752990AB 3RD												1.47	0.0440	0.00063	0.0601	0.0223	85.4	
10/12/2016	12:11:47 AM	DCM6 SET-UP 3RD												1.46	0.0427	0.00085	0.0603	0.0233	85.2	
10/12/2016	12:10:26 AM	DCM5 40566-07 3RD		KB 380 CH	AI100New	8.75	0.857	3.17	0.252	0.00414	0.0486	0.0687	1.47	0.0435	0.00068	0.0598	0.0228	85.2		
10/12/2016	12:08:54 AM	DCM21 SET-UP 3RD		SS-390 BD	AI100New	16.14	0.768	4.54	0.221	0.332	0.0445	0.0356	0.738	0.0575	0.00066	0.0256	0.0422	77.1		
10/12/2016	12:03:20 AM	DCM18 242664R 3RD		SS-390 BD	AI100New	16.66	0.757	4.60	0.198	0.482	0.0413	0.0475	0.740	0.0558	<0.00050	0.0288	0.0337	76.4		
10/12/2016	12:01:56 AM	DCM17 24231650 3RD		SS-390 BD	AI100New	16.29	0.772	4.68	0.199	0.491	0.0419	0.0476	0.750	0.0559	<0.00050	0.0295	0.0341	76.6		
10/12/2016	12:01:16 AM	DCM16 4180-034-0560 3RD		SS-390 BD	AI100New	16.31	0.770	4.66	0.198	0.478	0.0419	0.0472	0.741	0.0560	0.00066	0.0288	0.0352	76.6		
10/11/2016	11:59:15 PM	DCM15 24268344R 3RD		SS-390 BD	AI100New	16.45	0.756	4.67	0.197	0.482	0.0415	0.0468	0.746	0.0559	<0.00050	0.0290	0.0346	76.5		
10/11/2016	11:55:18 PM	DCM10 24224026 3RD		SS-390 BD	AI100New	16.90	0.750	4.41	0.188	0.463	0.0405	0.0428	0.731	0.0544	<0.00050	0.0261	0.0304	76.4		
10/11/2016	11:52:29 PM	DCM8 24224026 3RD		SS-390 BD	AI100New	16.45	0.745	4.51	0.200	0.394	0.0428	0.0319	0.718	0.0560	<0.00050	0.0245	0.0373	76.8		
10/11/2016	11:49:26 PM	DCM2 1130-034-0562 3RD		SS-390 BD	AI100New	16.17	0.761	4.49	0.199	0.465	0.0424	0.0439	0.786	0.0560	0.00063	0.0291	0.0331	76.9		
10/11/2016	11:47:25 PM	DCM1 24224026 3RD		SS-390 BD	AI100New	16.68	0.772	4.38	0.194	0.455	0.0419	0.0418	0.746	0.0551	<0.00050	0.0269	0.0298	76.6		
10/11/2016	11:39:43 PM	RF=7 3RD		SS-390 BD	AI100New	16.38	0.753	4.53	0.194	0.474	0.0412	0.0455	0.739	0.0556	0.00072	0.0279	0.0322	76.7		
10/11/2016	11:36:56 PM	RF=6 3RD		SS-390 BD	AI100New	16.57	0.751	4.54	0.195	0.456	0.0415	0.0453	0.749	0.0553	<0.00050	0.0283	0.0329	76.5		
10/11/2016	11:35:28 PM	RF=8 3RD		KB 380 CH	AI100New	8.58	0.823	3.11	0.252	<0.00100	0.0508	0.0678	1.45	0.0455	0.00064	0.0589	0.0218	85.5		
10/11/2016	11:34:05 PM	RF=4 3RD		KB 380 CH	AI100New	8.60	0.826	3.14	0.245	0.00664	0.0479	0.0668	1.51	0.0432	<0.00050	0.0577	0.0221	85.4		
10/11/2016	9:46:30 PM	MACH 19 2ND 7L328		KB 380 CH	AI100New	9.11	0.894	3.25	0.262	0.00615	0.0483	0.0725	1.62	0.0452	0.00106	0.0656	0.0241	84.6		
10/11/2016	9:44:48 PM	MACH 14 2ND 3778-07		KB 380 CH	AI100New	9.11	0.888	3.22	0.259	0.00207	0.0497	0.0705	1.55	0.0449	0.00117	0.0638	0.0232	84.7		

102761 Analyses 1 marked analyses SUPER Num Basic Terminal1

2:16 PM 8/6/2018

DIA 2000 SE - Analyses management system

File Edit View Formats Extras Basic files Configuration Help

Files Print Statistics Export Filter View Details Login Help Home Web

Standard [no Selection] Start

Date	Time	SampleNo	Comment	Quality	Method	Si	Fe	Cu	Mn	Mg	Cr	Ni	Zn	Ti	Cd	Pb	Sn	Al	SF
10/12/2016	12:47:20 PM	40915	INCOMINI	KB 380 CH	AI100New	8.74	0.908	3.42	0.247	0.00599	0.0470	0.0739	1.46	0.0447	<0.00050	0.0595	0.0321	85.0	
10/12/2016	12:07:47 PM	IST-M-19-328		KB 380 CH	AI100New	8.69	0.931	3.32	0.251	0.0121	0.0506	0.0752	1.58	0.0465	0.00076	0.0620	0.0330	85.0	
10/12/2016	12:05:40 PM	IST-M-14-37778-07		KB 380 CH	AI100New	8.76	0.940	3.31	0.255	0.00736	0.0514	0.0755	1.57	0.0457	0.00058	0.0610	0.0325	84.9	
10/12/2016	12:03:03 PM	IST-M-7-295																	
10/12/2016	12:00:46 PM	IST-M-6-405																	
10/12/2016	11:58:35 AM	IST-M-5-405																	
10/12/2016	11:56:14 AM	IST-M-21-2																	
10/12/2016	11:53:50 AM	IST-M-18-2																	
10/12/2016	11:49:37 AM	IST-M-17-1																	
10/12/2016	11:45:11 AM	IST-M-16-418																	
10/12/2016	11:42:36 AM	IBST-M-15-3																	
10/12/2016	11:34:14 AM	IST-M-10-40																	
10/12/2016	11:32:07 AM	IST-M-9-40																	
10/12/2016	11:29:32 AM	IST-M-2-1136																	
10/12/2016	11:26:26 AM																		
10/12/2016	11:23:53 AM																		
10/12/2016	11:21:52 AM	IST-RF4																	
10/12/2016	11:19:44 AM	IST-RF7																	
10/12/2016	11:17:41 AM	IST-RF6																	
10/12/2016	10:50:25 AM	IST-RF6																	
10/12/2016	10:47:45 AM	SS-390 BD																	
10/12/2016	10:45:28 AM	KB 380 CH																	
10/12/2016	10:40:55 AM	RF6																	
10/12/2016	10:09:18 AM	TRIALCD																	
10/12/2016	12:15:59 AM	DCM19 RF8																	
10/12/2016	12:14:38 AM	DCM14 3777																	
10/12/2016	12:13:15 AM	DCM7 04752																	
10/12/2016	12:11:47 AM	DCM6 SET-L																	
10/12/2016	12:10:26 AM	DCM5 40566																	
10/12/2016	12:08:54 AM	DCM21 SET-L																	
10/12/2016	12:03:20 AM	DCM18 2426																	
10/12/2016	12:01:56 AM	DCM17 2423																	
10/12/2016	12:01:16 AM	DCM16 4180																	
10/11/2016	11:59:15 PM	DCM15 2426																	
10/11/2016	11:55:18 PM	DCM10 2422																	
10/11/2016	11:52:29 PM	DCM8 24224																	
10/11/2016	11:49:26 PM	DCM2 1130-0																	
10/11/2016	11:47:25 PM	DCM1 24224026	3RD.		SS-390 BD	AI100New	16.68	0.772	4.38	0.194	0.455	0.0419	0.0418	0.746	0.0551	<0.00050	0.0269	0.0298	76.6
10/11/2016	11:39:43 PM	RF=7	3RD		SS-390 BD	AI100New	16.38	0.753	4.53	0.194	0.474	0.0412	0.0455	0.739	0.0556	0.00072	0.0279	0.0322	76.7
10/11/2016	11:36:56 PM	RF=6	3RD		SS-390 BD	AI100New	16.57	0.751	4.54	0.195	0.456	0.0415	0.0453	0.749	0.0553	<0.00050	0.0283	0.0329	76.5
10/11/2016	11:35:28 PM	RF=8	3RD		KB 380 CH	AI100New	8.58	0.823	3.11	0.252	<0.00100	0.0508	0.0678	1.45	0.0455	0.00064	0.0589	0.0218	85.5
10/11/2016	11:34:05 PM	RF=4	3RD		KB 380 CH	AI100New	8.60	0.826	3.14	0.245	0.00664	0.0479	0.0668	1.51	0.0432	<0.00050	0.0577	0.0221	85.4
10/11/2016	9:46:30 PM	MACH 19 2ND 7L328			KB 380 CH	AI100New	9.11	0.894	3.25	0.262	0.00615	0.0483	0.0725	1.62	0.0452	0.00106	0.0656	0.0241	84.6
10/11/2016	9:44:48 PM	MACH 14 2ND 3778-07			KB 380 CH	AI100New	9.11	0.888	3.22	0.259	0.00207	0.0497	0.0705	1.55	0.0449	0.00117	0.0638	0.0232	84.7

102761 Analyses 1 marked analyses SUPER Num Basic Terminal:1

2:16 PM 8/6/2018

DIA 2000 SE - Analyses management system

File Edit View Formats Extras Basic files Configuration Help

Files Print Statistics Export Filter View Details Login Help Home Web

Standard (no Selection) Start

Date	Time	SampleNo	Comment	Quality	Method	Si	Fe	Cu	Mn	Mg	Cr	Ni	Zn	Ti	Cd	Pb	Sn	Al	SF
10/12/2016	12:47:20 PM	40915	INCOMINI KB 380 CH		AI100New	8.74	0.908	3.42	0.247	0.00599	0.0470	0.0739	1.46	0.0447	<0.00050	0.0595	0.0321	85.0	
10/12/2016	12:07:47 PM	IST-M-19-328	KB 380 CH		AI100New	8.69	0.931	3.32	0.251	0.0121	0.0506	0.0752	1.58	0.0465	0.00076	0.0620	0.0330	85.0	
10/12/2016	12:05:40 PM	IST-M-14-37778-07	KB 380 CH		AI100New	8.76	0.940	3.31	0.255	0.00736	0.0514	0.0755	1.57	0.0457	0.00058	0.0610	0.0325	84.9	
10/12/2016	12:03:03 PM	IST-M-7-2990	KB 380 CH		AI100New	8.88	0.955	3.40	0.255	0.0116	0.0509	0.0776	1.60	0.0444	0.00062	0.0643	0.0341	84.6	
10/12/2016	12:00:46 PM	IST-M-6-90-BE	KB 380 CH		AI100New	8.84	0.952	3.37	0.249	<0.00100	0.0516	0.0768	1.54	0.0460	0.00091	0.0612	0.0328	84.8	
10/12/2016	11:58:35 AM	IST-M-5-40566-07	KB 380 CH		AI100New	8.70	0.931	3.34	0.249	0.00965	0.0499	0.0763	1.57	0.0460	0.00069	0.0626	0.0334	84.9	
10/12/2016	11:56:14 AM	IST-M-21---	MACH-2 SS-390 BD		AI100New	15.95	0.857	4.74	0.247	0.276	0.0500	0.0361	0.780	0.0646	<0.00050	0.0264	0.0494	76.9	
10/12/2016	11:53:50 AM	IST-M-18-242664-R	SS-390 BD		AI100New	16.83	0.850	4.62	0.215	0.524	0.0460	0.0474	0.777	0.0625	<0.00050	0.0297	0.0373	76.0	
10/12/2016	11:49:37 AM	IST-M-17-1650																	
10/12/2016	11:45:11 AM	IST-M-16-4180-034-0560																	
10/12/2016	11:42:36 AM	IST-M-15-8344																	
10/12/2016	11:34:14 AM	IST-M-10-4026																	
10/12/2016	11:32:07 AM	IST-M-9-4026																	
10/12/2016	11:29:32 AM	IST-M-2-1130-034-0562																	
10/12/2016	11:26:26 AM																		
10/12/2016	11:23:53 AM																		
10/12/2016	11:21:52 AM	IST-RF4																	
10/12/2016	11:19:44 AM	IST-RF7																	
10/12/2016	11:17:41 AM	IST-RF6																	
10/12/2016	10:50:25 AM	IST-RF6																	
10/12/2016	10:47:45 AM	SS-390 BD																	
10/12/2016	10:45:28 AM	KB 380 CH																	
10/12/2016	10:40:55 AM	RF6																	
10/12/2016	10:09:18 AM	TRIALCD																	
10/12/2016	12:15:59 AM	DCM19 RFBC3P7L328AE																	
10/12/2016	12:14:38 AM	DCM14 37778-07 3RD																	
10/12/2016	12:13:15 AM	DCM7 04752990AB 3RD																	
10/12/2016	12:11:47 AM	DCM6 SET-UP 3RD																	
10/12/2016	12:10:26 AM	DCM5 40566-07 3RD																	
10/12/2016	12:08:54 AM	DCM21 SET-UP 3RD																	
10/12/2016	12:03:20 AM	DCM18 242664R 3RD																	
10/12/2016	12:01:56 AM	DCM17 24231650 3RD																	
10/12/2016	12:01:16 AM	DCM16 4180-034-0560 3RD																	
10/11/2016	11:59:15 PM	DCM15 24268344R 3RD																	
10/11/2016	11:55:18 PM	DCM10 24224026 3RD																	
10/11/2016	11:52:29 PM	DCM8 24224026 3RD	DOWN																
10/11/2016	11:49:26 PM	DCM2 1130-034-0562 3RD																	
10/11/2016	11:47:25 PM	DCM1 24224026 3RD																	
10/11/2016	11:39:43 PM	RF=7 3RD																	
10/11/2016	11:36:56 PM	RF=6 3RD																	
10/11/2016	11:35:28 PM	RF=8 3RD																	
10/11/2016	11:34:05 PM	RF=4 3RD																	
10/11/2016	9:46:30 PM	MACH 19 2ND 7L328																	
10/11/2016	9:44:48 PM	MACH 14 2ND 3778-07																	

Instrument Description Priority Default Program Color

Quatron Magellan 0 QM

New Delete BGColor FGColor Close

102761 Analyses 1 marked analyses SUPER Num Basic Terminal:1

2:17 PM 8/6/2018

DIA 2000 SE - Analyses management system

File Edit View Formats Extras Basic files Configuration Help

Files Print Statistics Export Filter View Details Login Help Home Web

Standard [no Selection] Start

Date	Time	SampleNo	Comment	Quality	Method	Si	Fe	Cu	Mn	Mg	Cr	Ni	Zn	Ti	Cd	Pb	Sn	Al	SF	
10/12/2016	12:47:20 PM	40915	INCOMINI	KB 380 CH	AI100New	8.74	0.908	3.42	0.247	0.00599	0.0470	0.0739	1.46	0.0447	<0.00050	0.0595	0.0321	85.0		
10/12/2016	12:07:47 PM	IST-M-19-328		KB 380 CH	AI100New	8.69	0.931	3.32	0.251	0.0121	0.0506	0.0752	1.58	0.0465	0.00076	0.0620	0.0330	85.0		
10/12/2016	12:05:40 PM	IST-M-14-37778-07		KB 380 CH	AI100New	8.76	0.940	3.31	0.255	0.00736	0.0514	0.0755	1.57	0.0457	0.00058	0.0610	0.0325	84.9		
10/12/2016	12:03:03 PM	IST-M-7-2990		KB 380 CH	AI100New	8.88	0.955	3.40	0.255	0.0116	0.0509	0.0776	1.60	0.0444	0.00062	0.0643	0.0341	84.6		
10/12/2016	12:00:46 PM	IST-M-6-90-BE		KB 380 CH	AI100New	8.84	0.952	3.37	0.249	<0.00100	0.0516	0.0768	1.54	0.0460	0.00091	0.0612	0.0328	84.8		
10/12/2016	11:58:35 AM	IST-M-5-40566-07		KB 380 CH	AI100New	8.70	0.931	3.34	0.249	0.00965	0.0499	0.0763	1.57	0.0460	0.00069	0.0626	0.0334	84.9		
10/12/2016	11:56:14 AM	IST-M-21-...		MACH-2	SS-390 BD	AI100New	15.95	0.857	4.74	0.247	0.276	0.0500	0.0361	0.780	0.0646	<0.00050	0.0264	0.0494	76.9	
10/12/2016	11:53:50 AM	IST-M-18-242664-R		SS-390 BD	AI100New	16.83	0.850	4.62	0.215	0.524	0.0460	0.0474	0.777	0.0625	<0.00050	0.0297	0.0373	76.0		
10/12/2016	11:49:37 AM	IST-M-17-1650		SS-390 BD	AI100New	16.79	0.838	4.59	0.212	0.505	0.0452	0.0468	0.751	0.0620	<0.00053	0.0293	0.0360	76.1		
10/12/2016	11:45:11 AM	IST-M-16-4180-034-0560		MACH-1	SS-390 BD	AI100New	15.00	0.880	4.80	0.213	0.510	0.0475	0.0505	0.802	0.0644	<0.00050	0.0306	0.0366	77.6	
10/12/2016	11:42:36 AM	IST-M-15-8344		SS-390 BD	AI100New	16.20	0.850	4.74	0.208	0.500	0.0457	0.0507	0.771	0.0632	<0.00056	0.0302	0.0366	76.5		
10/12/2016	11:34:14 AM	IST-M-10-4026		SS-390 BD	AI100New	16.66	0.849	4.71	0.207	0.521	0.0452	0.0510	0.773	0.0621	<0.00050	0.0307	0.0348	76.1		
10/12/2016	11:32:07 AM	IST-M-9-4026		MACH-D	SS-390 BD	AI100New	15.95	0.845	4.65	0.220	0.426	0.0427	0.0356	0.749	0.0644	<0.00050	0.0270	0.0402	76.9	
10/12/2016	11:29:32 AM	IST-M-2-1130-034-0562		SS-39									0.0473	0.811	0.0632	<0.00050	0.0309	0.0356	76.6	
10/12/2016	11:26:26 AM	IST-M-1-SS-39		SS-39									0.0455	0.792	0.0635	<0.00050	0.0294	0.0359	77.0	
10/12/2016	11:23:53 AM	IST-RF8 KB 38		SS-39									0.0760	1.58	0.0471	<0.00050	0.0637	0.0338	85.0	
10/12/2016	11:21:52 AM	IST-RF4		SS-39									0.0774	1.59	0.0456	0.00069	0.0652	0.0334	84.6	
10/12/2016	11:19:44 AM	IST-RF7		SS-39									0.0507	0.779	0.0626	<0.00050	0.0314	0.0364	76.1	
10/12/2016	11:17:41 AM	IST-RF6		SS-39									0.0496	0.787	0.0636	<0.00050	0.0305	0.0363	76.6	
10/12/2016	10:50:25 AM	IST-RF6		SS-39									0.0488	0.778	0.0627	<0.00050	0.0303	0.0366	76.0	
10/12/2016	10:47:45 AM	SS-390 BD		SS-39									0.117	0.449	0.0828	<0.00050	0.0778	0.0857	75.5	
10/12/2016	10:45:28 AM	KB 380 CH		SS-39									0.109	0.870	0.0336	<0.00050	0.190	0.0757	85.6	
10/12/2016	10:40:55 AM	RF6		SS-39									0.0464	0.767	0.0566	<0.00050	0.0295	0.0354	76.4	
10/12/2016	10:09:18 AM	HT# J10A SS-39		SS-39									0.0190	0.654	0.0974	<0.00050	0.0142	0.00771	76.6	
10/12/2016	12:15:59 AM	DCM19 RFBC3P7L328AE 3RD		KB 38									0.0682	1.47	0.0436	0.00094	0.0587	0.0221	85.4	
10/12/2016	12:14:38 AM	DCM14 37778-07 3RD		KB 38									0.0690	1.47	0.0433	0.00105	0.0595	0.0222	85.3	
10/12/2016	12:13:15 AM	DCM7 04752990AB 3RD		KB 38									0.0695	1.47	0.0440	0.00063	0.0601	0.0223	85.4	
10/12/2016	12:11:47 AM	DCM6 SET-UP 3RD		KB 380 CH	AI100New	8.75	0.875	3.21	0.254	<0.00100	0.0499	0.0701	1.46	0.0427	0.00085	0.0603	0.0233	85.2		
10/12/2016	12:10:26 AM	DCM5 40566-07 3RD		KB 380 CH	AI100New	8.75	0.857	3.17	0.252	0.00414	0.0486	0.0687	1.47	0.0435	0.00068	0.0598	0.0228	85.2		
10/12/2016	12:08:54 AM	DCM21 SET-UP 3RD		SS-390 BD	AI100New	16.14	0.768	4.54	0.221	0.332	0.0445	0.0356	0.738	0.0575	0.00066	0.0256	0.0422	77.1		
10/12/2016	12:03:20 AM	DCM18 242664R 3RD		SS-390 BD	AI100New	16.66	0.757	4.60	0.198	0.482	0.0413	0.0475	0.740	0.0558	<0.00050	0.0288	0.0337	76.4		
10/12/2016	12:01:56 AM	DCM17 24231650 3RD		SS-390 BD	AI100New	16.29	0.772	4.68	0.199	0.491	0.0419	0.0476	0.750	0.0559	<0.00050	0.0295	0.0341	76.6		
10/12/2016	12:01:16 AM	DCM16 4180-034-0560 3RD		SS-390 BD	AI100New	16.31	0.770	4.66	0.198	0.478	0.0419	0.0472	0.741	0.0560	0.00066	0.0288	0.0352	76.6		
10/11/2016	11:59:15 PM	DCM15 24268344R 3RD		SS-390 BD	AI100New	16.45	0.756	4.67	0.197	0.482	0.0415	0.0468	0.746	0.0559	<0.00050	0.0290	0.0346	76.5		
10/11/2016	11:55:18 PM	DCM10 24224026 3RD		SS-390 BD	AI100New	16.90	0.750	4.41	0.188	0.463	0.0405	0.0428	0.731	0.0544	<0.00050	0.0261	0.0304	76.4		
10/11/2016	11:52:29 PM	DCM8 24224026 3RD		SS-390 BD	AI100New	16.45	0.745	4.51	0.200	0.394	0.0428	0.0319	0.718	0.0560	<0.00050	0.0245	0.0373	76.8		
10/11/2016	11:49:26 PM	DCM2 1130-034-0562 3RD		SS-390 BD	AI100New	16.17	0.761	4.49	0.199	0.465	0.0424	0.0439	0.786	0.0560	0.00063	0.0291	0.0331	76.9		
10/11/2016	11:47:25 PM	DCM1 24224026 3RD		SS-390 BD	AI100New	16.68	0.772	4.38	0.194	0.455	0.0419	0.0418	0.746	0.0551	<0.00050	0.0269	0.0298	76.6		
10/11/2016	11:39:43 PM	RF=7 3RD		SS-390 BD	AI100New	16.38	0.753	4.53	0.194	0.474	0.0412	0.0455	0.739	0.0556	0.00072	0.0279	0.0322	76.7		
10/11/2016	11:36:56 PM	RF=6 3RD		SS-390 BD	AI100New	16.57	0.751	4.54	0.195	0.456	0.0415	0.0453	0.749	0.0553	<0.00050	0.0283	0.0329	76.5		
10/11/2016	11:35:28 PM	RF=8 3RD		KB 380 CH	AI100New	8.58	0.823	3.11	0.252	<0.00100	0.0508	0.0678	1.45	0.0455	0.00064	0.0589	0.0218	85.5		
10/11/2016	11:34:05 PM	RF=4 3RD		KB 380 CH	AI100New	8.60	0.826	3.14	0.245	0.00664	0.0479	0.0668	1.51	0.0432	<0.00050	0.0577	0.0221	85.4		
10/11/2016	9:46:30 PM	MACH 19 2ND 7L328		KB 380 CH	AI100New	9.11	0.894	3.25	0.262	0.00615	0.0483	0.0725	1.62	0.0452	0.00106	0.0656	0.0241	84.6		
10/11/2016	9:44:48 PM	MACH 14 2ND 3778-07		KB 380 CH	AI100New	9.11	0.888	3.22	0.259	0.00207	0.0497	0.0705	1.55	0.0449	0.00117	0.0638	0.0232	84.7		

102761 Analyses 1 marked analyses SUPER Num Basic Terminal1

2:17 PM 8/6/2018

DIA 2000 SE - Analyses management system

File Edit View Formats Extras Basic files Configuration Help

Files Print Statistics Export Filter View Details Login Help Home Web

Standard [no Selection] Start

Date	Time	SampleNo	Comment	Quality	Method	Si	Fe	Cu	Mn	Mg	Cr	Ni	Zn	Ti	Cd	Pb	Sn	Al	SF
10/12/2016	12:47:20 PM	40915	INCOMINI KB 380 CH	AI100New	8.74	0.908	3.42	0.247	0.00599	0.0470	0.0739	1.46	0.0447	<0.00050	0.0595	0.0321	85.0		
10/12/2016	12:07:47 PM	IST-M-19-328	KB 380 CH	AI100New	8.69	0.931	3.32	0.251	0.0121	0.0506	0.0752	1.58	0.0465	0.00076	0.0620	0.0330	85.0		
10/12/2016	12:05:40 PM	IST-M-14-37778-07	KB 380 CH	AI100New	8.76	0.940	3.31	0.255	0.00736	0.0514	0.0755	1.57	0.0457	0.00058	0.0610	0.0325	84.9		
10/12/2016	12:03:03 PM	IST-M-7-2990	KB 380 CH	AI100New	8.88	0.955	3.40	0.255	0.0116	0.0509	0.0776	1.60	0.0444	0.00062	0.0643	0.0341	84.6		
10/12/2016	12:00:46 PM	IST-M-6-90-BE	KB 380 CH	AI100New	8.84	0.952	3.37	0.249	<0.00100	0.0516	0.0768	1.54	0.0460	0.00091	0.0612	0.0328	84.8		
10/12/2016	11:58:35 AM	IST-M-5-4056													0.0626	0.0334	84.9		
10/12/2016	11:56:14 AM	IST-M-21													0.0624	0.0494	76.9		
10/12/2016	11:53:50 AM	IST-M-18-24													0.0297	0.0373	76.0		
10/12/2016	11:49:37 AM	IST-M-17-18													0.0293	0.0360	76.1		
10/12/2016	11:45:11 AM	IST-M-16-418													0.0306	0.0366	77.6		
10/12/2016	11:42:36 AM	IST-M-15-83													0.0302	0.0366	76.5		
10/12/2016	11:34:14 AM	IST-M-10-402													0.0307	0.0348	76.1		
10/12/2016	11:32:07 AM	IST-M-9-402													0.0270	0.0402	76.9		
10/12/2016	11:29:32 AM	IST-M-2-1130													0.0309	0.0356	76.6		
10/12/2016	11:26:26 AM														0.0294	0.0359	77.0		
10/12/2016	11:23:53 AM														0.0637	0.0338	85.0		
10/12/2016	11:21:52 AM	IST-RF4													0.0652	0.0334	84.6		
10/12/2016	11:19:44 AM	IST-RF7													0.0314	0.0364	76.1		
10/12/2016	11:17:41 AM	IST-RF6													0.0305	0.0363	76.6		
10/12/2016	10:50:25 AM	IST-RF6													0.0303	0.0366	76.0		
10/12/2016	10:47:45 AM	SS-390 BD													0.0778	0.0857	75.5		
10/12/2016	10:45:28 AM	KB 380 CH													0.190	0.0757	85.6		
10/12/2016	10:40:55 AM	RF6													0.0295	0.0354	76.4		
10/12/2016	10:09:18 AM	TRIALCD													0.0142	0.00771	76.6		
10/12/2016	12:15:59 AM	DCM19 RFBC3													0.0587	0.0221	85.4		
10/12/2016	12:14:38 AM	DCM14 37778													0.0595	0.0222	85.3		
10/12/2016	12:13:15 AM	DCM7 047529													0.0601	0.0223	85.4		
10/12/2016	12:11:47 AM	DCM6 SET-UF													0.0603	0.0233	85.2		
10/12/2016	12:10:26 AM	DCM5 40566-0													0.0598	0.0228	85.2		
10/12/2016	12:08:54 AM	DCM21 SET-UF													0.0256	0.0422	77.1		
10/12/2016	12:03:20 AM	DCM18 24266													0.0288	0.0337	76.4		
10/12/2016	12:01:56 AM	DCM17 24231													0.0295	0.0341	76.6		
10/12/2016	12:01:16 AM	DCM16 4180-0													0.0288	0.0352	76.6		
10/11/2016	11:59:15 PM	DCM15 24268													0.0290	0.0346	76.5		
10/11/2016	11:55:18 PM	DCM10 24224													0.0261	0.0304	76.4		
10/11/2016	11:52:29 PM	DCM8 24224026 3RD	DOWN	SS-390 BD	AI100New	16.45	0.745	4.51	0.200	0.394	0.0428	0.0319	0.718	0.0560	<0.00050	0.0245	0.0373	76.8	
10/11/2016	11:49:26 PM	DCM2 1130-034-0562 3RD		SS-390 BD	AI100New	16.17	0.761	4.49	0.199	0.465	0.0424	0.0439	0.786	0.0560	0.00063	0.0291	0.0331	76.9	
10/11/2016	11:47:25 PM	DCM1 24224026 3RD		SS-390 BD	AI100New	16.68	0.772	4.38	0.194	0.455	0.0419	0.0418	0.746	0.0551	<0.00050	0.0269	0.0298	76.6	
10/11/2016	11:39:43 PM	RF=7 3RD		SS-390 BD	AI100New	16.38	0.753	4.53	0.194	0.474	0.0412	0.0455	0.739	0.0556	0.00072	0.0279	0.0322	76.7	
10/11/2016	11:36:56 PM	RF=6 3RD		SS-390 BD	AI100New	16.57	0.751	4.54	0.195	0.456	0.0415	0.0453	0.749	0.0553	<0.00050	0.0283	0.0329	76.5	
10/11/2016	11:35:28 PM	RF=8 3RD		KB 380 CH	AI100New	8.58	0.823	3.11	0.252	<0.00100	0.0508	0.0678	1.45	0.0455	0.00064	0.0589	0.0218	85.5	
10/11/2016	11:34:05 PM	RF=4 3RD		KB 380 CH	AI100New	8.60	0.826	3.14	0.245	0.00664	0.0479	0.0668	1.51	0.0432	<0.00050	0.0577	0.0221	85.4	
10/11/2016	9:46:30 PM	MACH 19 2ND 7L328		KB 380 CH	AI100New	9.11	0.894	3.25	0.262	0.00615	0.0483	0.0725	1.62	0.0452	0.00106	0.0656	0.0241	84.6	
10/11/2016	9:44:48 PM	MACH 14 2ND 3778-07		KB 380 CH	AI100New	9.11	0.888	3.22	0.259	0.00207	0.0497	0.0705	1.55	0.0449	0.00117	0.0638	0.0232	84.7	

102761 Analyses 1 marked analyses SUPER Num Basic Terminal:1

2:17 PM 8/6/2018

DIA 2000 SE - Analyses management system

File Edit View Formats Extras Basic files Configuration Help

Files Print Statistics Export Filter View Details Login Help Home Web

Standard [no Selection] Start

Date	Time	SampleNo	Comment	Quality	Method	Si	Fe	Cu	Mn	Mg	Cr	Ni	Zn	Ti	Cd	Pb	Sn	Al	SF
10/12/2016	12:47:20 PM	40915	INCOMINI KB 380 CH	AI100New	8.74	0.908	3.42	0.247	0.00599	0.0470	0.0739	1.46	0.0447	<0.00050	0.0595	0.0321	85.0		
10/12/2016	12:07:47 PM	IST--M--19--328	KB 380 CH	AI100New	8.68	0.931	3.32	0.251	0.0121	0.0506	0.0752	1.58	0.0465	0.00076	0.0620	0.0330	85.0		
10/12/2016	12:05:40 PM	IST--M--14--37778-07	KB 380 CH	AI100New	8.76	0.940	3.31	0.255	0.00736	0.0514	0.0755	1.57	0.0457	0.00058	0.0610	0.0325	84.9		
10/12/2016	12:03:03 PM	IST--M--7--299	KB 380 CH	AI100New	8.68	0.955	3.40	0.255	0.0116	0.0506	0.0739	1.58	0.0444	0.00052	0.0643	0.0341	84.6		
10/12/2016	12:00:46 PM	IST--M--6--405																	
10/12/2016	11:58:35 AM	IST--M--5--405																	
10/12/2016	11:56:14 AM	IST--M--21--2																	
10/12/2016	11:53:50 AM	IST--M--18--2																	
10/12/2016	11:49:37 AM	IST--M--17--1																	
10/12/2016	11:45:11 AM	IST--M--16--416	AI100New																
10/12/2016	11:42:36 AM	IBST--M--15--3	AI100New i																
10/12/2016	11:34:14 AM	IST--M--10--40	AI100New																
10/12/2016	11:32:07 AM	IST--M--9--40	Int Die																
10/12/2016	11:29:32 AM	IST--M--2--1130	Int Die i																
10/12/2016	11:26:26 AM																		
10/12/2016	11:23:53 AM																		
10/12/2016	11:21:52 AM	IST--RF4																	
10/12/2016	11:19:44 AM	IST--RF7																	
10/12/2016	11:17:41 AM	IST--RF6																	
10/12/2016	10:50:25 AM	IST--RF6																	
10/12/2016	10:47:45 AM	SS-390 BD																	
10/12/2016	10:45:28 AM	KB 380 CH																	
10/12/2016	10:40:55 AM	RF6																	
10/12/2016	10:09:18 AM	TRIALCD																	
10/12/2016	12:15:59 AM	DCM19 RF80																	
10/12/2016	12:14:38 AM	DCM14 3777																	
10/12/2016	12:13:15 AM	DCM7 04752																	
10/12/2016	12:11:47 AM	DCM6 SET-L																	
10/12/2016	12:10:26 AM	DCM5 40566																	
10/12/2016	12:08:54 AM	DCM21 SET-L																	
10/12/2016	12:03:20 AM	DCM18 2426																	
10/12/2016	12:01:56 AM	DCM17 2423																	
10/12/2016	12:01:16 AM	DCM16 4180																	
10/11/2016	11:59:15 PM	DCM15 2426																	
10/11/2016	11:55:18 PM	DCM10 2422																	
10/11/2016	11:52:29 PM	DCM8 24224																	
10/11/2016	11:49:26 PM	DCM2 1130-05																	
10/11/2016	11:47:25 PM	DCM1 24224026 3RD.																	
10/11/2016	11:39:43 PM	RF=7 3RD																	
10/11/2016	11:36:56 PM	RF=6 3RD																	
10/11/2016	11:35:28 PM	RF=8 3RD																	
10/11/2016	11:34:05 PM	RF=4 3RD																	
10/11/2016	9:46:30 PM	MACH 19 2ND 7L328																	
10/11/2016	9:44:48 PM	MACH 14 2ND 3778-07																	

102761 Analyses 1 marked analyses SUPER Num Basic Terminal:1

2:18 PM 8/6/2018

Display format

Header of display format

Display	Base element
AI100	
AI100New	
AI100New i	
AI100New	
Int Die	
Int Die i	

ID-field

No.	Ident	Displayname
1	Date	Date
2	Instrument	Instrument
3	Program	Program
4	QualityOK	QualityOK
5	Quality	Quality
6	QualityVersion	QualityVersion
7	SampleNo	SampleNo
8	Status	Status
9	Time	Time

Element

No.	Element	Dimension	No. of decim	Four	Quality	Disj
1	Al	%	Dynamic	S	No	Al
2	Cd	%	Dynamic	S	No	Cd
3	Cr	%	Dynamic	S	No	Cr
4	Cu	%	Dynamic	S	No	Cu
5	Fe	%	Dynamic	S	No	Fe
6	Mg	%	Dynamic	S	No	Mg
7	Mn	%	Dynamic	S	No	Mn
8	Ni	%	Dynamic	S	No	Ni
9	Pb	%	Dynamic	S	No	Pb
10	Si	%	Dynamic	S	No	Si
11	Sn	%	Dynamic	S	No	Sn
12	Ti	%	Dynamic	S	No	Ti
13	Zn	%	Dynamic	S	No	Zn

New Copy Delete Extra Close



DIA 2000 SE - Analyses management system

File Edit View Formats Extras Basic files Configuration Help

Files Print Statistics Export Filter View Details Login Help Home Web

Standard [no Selection] Start

Date	Time	SampleNo	Comment	Quality	Method	Si	Fe	Cu	Mn	Mg	Cr	Ni	Zn	Ti	Cd	Pb	Sn	Al	SF
10/12/2016	12:47:20 PM	40915	INCOMINI KB 380 CH	AI100New	8.74	0.908	3.42	0.247	0.00599	0.0470	0.0739	1.46	0.0447	<0.00050	0.0595	0.0321	85.0		
10/12/2016	12:07:47 PM	IST-M-19-328	KB 380 CH	AI100New	8.68	0.931	3.32	0.251	0.0121	0.0506	0.0752	1.58	0.0465	0.00076	0.0620	0.0330	85.0		
10/12/2016	12:05:40 PM	IST-M-14-32778-07	KB 380 CH	AI100New	8.76	0.940	3.21	0.255	0.00726	0.0514	0.0755	1.57	0.0457	0.00058	0.0610	0.0325	84.9		
10/12/2016	12:03:03 PM	IST-M-7-293														0.0643	0.0341	84.6	
10/12/2016	12:00:46 PM	IST-M-6-90														0.0612	0.0328	84.8	
10/12/2016	11:58:35 AM	IST-M-5-40														0.0626	0.0334	84.9	
10/12/2016	11:56:14 AM	IST-M-21-...														0.0264	0.0494	76.9	
10/12/2016	11:53:50 AM	IST-M-18-...														0.0297	0.0373	76.0	
10/12/2016	11:49:37 AM	IST-M-17-...														0.0293	0.0360	76.1	
10/12/2016	11:45:11 AM	IST-M-16-41														0.0306	0.0366	77.6	
10/12/2016	11:42:36 AM	IST-M-15-...														0.0302	0.0366	76.5	
10/12/2016	11:34:14 AM	IST-M-10-4														0.0307	0.0348	76.1	
10/12/2016	11:32:07 AM	IST-M-9-40														0.0270	0.0402	76.9	
10/12/2016	11:29:32 AM	IST-M-2-113														0.0309	0.0356	76.6	
10/12/2016	11:26:26 AM															0.0294	0.0359	77.0	
10/12/2016	11:23:53 AM															0.0637	0.0338	85.0	
10/12/2016	11:21:52 AM	IST-RF4														0.0652	0.0334	84.6	
10/12/2016	11:19:44 AM	IST-RF7														0.0314	0.0364	76.1	
10/12/2016	11:17:41 AM	IST RF6														0.0305	0.0363	76.6	
10/12/2016	10:50:25 AM	IST-RF6														0.0303	0.0366	76.0	
10/12/2016	10:47:45 AM	SS-390 BD														0.0778	0.0857	75.5	
10/12/2016	10:45:28 AM	KB 380 CH														0.190	0.0757	85.6	
10/12/2016	10:40:55 AM	RF6														0.0295	0.0354	76.4	
10/12/2016	10:09:18 AM	TRIALCD														0.0142	0.00771	76.6	
10/12/2016	12:15:59 AM	DCM19 RF8														0.0587	0.0221	85.4	
10/12/2016	12:14:38 AM	DCM14 377														0.0595	0.0222	85.3	
10/12/2016	12:13:15 AM	DCM7 04752														0.0601	0.0223	85.4	
10/12/2016	12:11:47 AM	DCM6 SET4														0.0603	0.0233	85.2	
10/12/2016	12:10:26 AM	DCM5 40568														0.0598	0.0228	85.2	
10/12/2016	12:08:54 AM	DCM21 SET4														0.0256	0.0422	77.1	
10/12/2016	12:03:20 AM	DCM18 2426														0.0288	0.0337	76.4	
10/12/2016	12:01:56 AM	DCM17 2423														0.0295	0.0341	76.6	
10/12/2016	12:01:16 AM	DCM16 4180														0.0288	0.0352	76.6	
10/11/2016	11:59:15 PM	DCM15 2426														0.0290	0.0346	76.5	
10/11/2016	11:55:18 PM	DCM10 2422														0.0261	0.0304	76.4	
10/11/2016	11:52:29 PM	DCM8 24224														0.0245	0.0373	76.8	
10/11/2016	11:49:26 PM	DCM2 1130-0														0.0291	0.0331	76.9	
10/11/2016	11:47:25 PM	DCM1 24224														0.0269	0.0298	76.6	
10/11/2016	11:39:43 PM	RF=7	3RD	SS-390 BD	AI100New	16.38	0.753	4.53	0.194	0.474	0.0412	0.0455	0.739	0.0556	0.00072	0.0279	0.0322	76.7	
10/11/2016	11:36:56 PM	RF=6	3RD	SS-390 BD	AI100New	16.57	0.751	4.54	0.195	0.456	0.0415	0.0453	0.749	0.0553	<0.00050	0.0283	0.0329	76.5	
10/11/2016	11:35:28 PM	RF=8	3RD	KB 380 CH	AI100New	8.58	0.823	3.11	0.252	<0.00100	0.0508	0.0678	1.45	0.0455	0.00064	0.0589	0.0218	85.5	
10/11/2016	11:34:05 PM	RF=4	3RD	KB 380 CH	AI100New	8.60	0.826	3.14	0.245	0.00664	0.0479	0.0668	1.51	0.0432	<0.00050	0.0577	0.0221	85.4	
10/11/2016	9:46:30 PM	MACH 19 2ND 7L328		KB 380 CH	AI100New	9.11	0.894	3.25	0.262	0.00615	0.0483	0.0725	1.62	0.0452	0.00106	0.0656	0.0241	84.6	
10/11/2016	9:44:48 PM	MACH 14 2ND 3778-07		KB 380 CH	AI100New	9.11	0.888	3.22	0.259	0.00207	0.0497	0.0705	1.55	0.0449	0.00117	0.0638	0.0232	84.7	

102761 Analyses 1 marked analyses SUPER Num Basic Terminal:1

2:18 PM 8/6/2018

DIA 2000 SE - Analyses management system

File Edit View Formats Extras Basic files Configuration Help

Files Print Statistics Export Filter View Details Login Help Home Web

Standard [no Selection] Start

Date	Time	SampleNo	Comment	Quality	Methode	Si	Fe	Cu	Mn	Mg	Cr	Ni	Zn	Ti	Cd	Pb	Sn	Al	SF
10/12/2016	12:07:20 PM	40915	INCOMINI KB 380 CH	AI100New	8.74	0.908	3.42	0.247	0.00599	0.0470	0.0739	1.46	0.0447	<0.00050	0.0595	0.0321	85.0		
10/12/2016	12:05:40																		
10/12/2016	12:03:03																		
10/12/2016	12:00:46																		
10/12/2016	11:58:35																		
10/12/2016	11:56:14																		
10/12/2016	11:53:50																		
10/12/2016	11:49:37																		
10/12/2016	11:45:11																		
10/12/2016	11:42:36																		
10/12/2016	11:34:14																		
10/12/2016	11:32:07																		
10/12/2016	11:29:32																		
10/12/2016	11:26:26																		
10/12/2016	11:23:53																		
10/12/2016	11:21:52																		
10/12/2016	11:19:44																		
10/12/2016	11:17:41																		
10/12/2016	10:50:25																		
10/12/2016	10:47:45																		
10/12/2016	10:45:28																		
10/12/2016	10:40:55																		
10/12/2016	10:09:18																		
10/12/2016	12:15:59																		
10/12/2016	12:14:38																		
10/12/2016	12:13:15																		
10/12/2016	12:11:47																		
10/12/2016	12:10:26																		
10/12/2016	12:08:54																		
10/12/2016	12:03:20																		
10/12/2016	12:01:56																		
10/12/2016	12:01:16																		
10/11/2016	11:59:15																		
10/11/2016	11:55:18																		
10/11/2016	11:52:23																		
10/11/2016	11:49:26																		
10/11/2016	11:47:25																		
10/11/2016	11:39:43 PM	RF=7	3RD	SS-390 BD	AI100New	16.38	0.753	4.53	0.194	0.474	0.0412	0.0455	0.739	0.0556	0.00072	0.0279	0.0322	76.7	
10/11/2016	11:36:56 PM	RF=6	3RD	SS-390 BD	AI100New	16.57	0.751	4.54	0.195	0.456	0.0415	0.0453	0.749	0.0553	<0.00050	0.0283	0.0329	76.5	
10/11/2016	11:35:28 PM	RF=8	3RD	KB 380 CH	AI100New	8.58	0.823	3.11	0.252	<0.00100	0.0508	0.0678	1.45	0.0455	0.00064	0.0589	0.0218	85.5	
10/11/2016	11:34:05 PM	RF=4	3RD	KB 380 CH	AI100New	8.60	0.826	3.14	0.245	0.00664	0.0479	0.0668	1.51	0.0432	<0.00050	0.0577	0.0221	85.4	
10/11/2016	9:46:30 PM	MACH 19 2ND 7L328		KB 380 CH	AI100New	9.11	0.894	3.25	0.262	0.00615	0.0483	0.0725	1.62	0.0452	0.00106	0.0656	0.0241	84.6	
10/11/2016	9:44:48 PM	MACH 14 2ND 3778-07		KB 380 CH	AI100New	9.11	0.888	3.22	0.259	0.00207	0.0497	0.0705	1.55	0.0449	0.00117	0.0638	0.0232	84.7	

102761 Analyses 1 marked analyses SUPER Num Basic Terminal:1

2:18 PM 8/6/2018

DIA 2000 SE - Analyses management system

File Edit View Formats Extras Basic files Configuration Help

Files

Print

Statistics

Export

Filter

View

Details

Login

Help

Home

Web

Standard

(no Selection)

Start

#	Date	Time	SampleNo	Comment	Quality	Method	Si	Fe	Cu	Mn	Mg	Cr	Ni	Zn	Ti	Cd	Pb	Sn	Al	SF		
5	10/12/2016	12:47:20 PM	40915	INCOMINI	KB 380 CH	AI100New	8.74	0.908	3.42	0.247	0.00599	0.0470	0.0739	1.46	0.0447	<0.00050	0.0595	0.0321	85.0			
	10/12/2016	12:07:47 PM	IST-M-19-328		KB 380 CH	AI100New	8.68	0.931	3.32	0.251	0.0121	0.0506	0.0752	1.58	0.0465	0.00076	0.0620	0.0330	85.0			
	10/12/2016	12:05:40 PM	IST-M-14-37778-07		KB 380 CH	AI100New	8.76	0.940	3.31	0.255	0.00736	0.0514	0.0755	1.57	0.0457	0.00058	0.0610	0.0325	84.9			
	10/12/2016	12:03:03 PM	IST-M-7-2990		KB 380 CH	AI100New	8.88	0.955	3.40	0.255	0.0116	0.0509	0.0776	1.60	0.0444	0.00062	0.0643	0.0341	84.6			
	10/12/2016	12:00:46 PM	IST-M-6-90-BE		KB 380 CH	AI100New	8.84	0.952	3.37	0.249	<0.00100	0.0516	0.0768	1.54	0.0460	0.00091	0.0612	0.0328	84.8			
	10/12/2016	11:58:35 AM	IST-M-5-40566-07		KB 380 CH	AI100New	8.70	0.931	3.34	0.249	0.00965	0.0499	0.0763	1.57	0.0460	0.00069	0.0626	0.0334	84.9			
	10/12/2016	11:56:14 AM	IST-M-21-		MACH-2	SS-390 BD	AI100New	15.95	0.857	4.74	0.247	0.276	0.0500	0.0361	0.780	0.0646	<0.00050	0.0264	0.0494	76.9		
	10/12/2016	11:53:50 AM	IST-M-18-242664-R		SS-390 BD	AI100New	16.83	0.850	4.62	0.215	0.524	0.0460	0.0474	0.777	0.0625	<0.00050	0.0297	0.0373	76.0			
	10/12/2016	11:49:37 AM	IST-M-17-1650		SS-390 BD	AI100New	16.79	0.838	4.59	0.212	0.505	0.0452	0.0468	0.751	0.0620	<0.00053	0.0293	0.0360	76.1			
	10/12/2016	11:45:11 AM	IST-M-16-4180-034-0560		MACH-1	SS-390 BD	AI100New	15.00	0.880	4.80	0.213	0.510	0.0475	0.0505	0.802	0.0644	<0.00050	0.0306	0.0366	77.6		
	10/12/2016	11:42:36 AM	IST-M-15-8344		SS-390 BD	AI100New	16.20	0.850	4.74	0.208	0.500	0.0457	0.0507	0.771	0.0632	<0.00056	0.0302	0.0366	76.5			
	10/12/2016	11:34:14 AM	IST-M-10-4026		SS-390 BD	AI100New	16.66	0.849	4.71	0.207	0.521	0.0452	0.0510	0.773	0.0621	<0.00050	0.0307	0.0348	76.1			
	10/12/2016	11:32:07 AM	IST-M-8-4026		MACH-D	SS-390 BD	AI100New	15.95	0.845	4.65	0.220	0.426	0.0477	0.0356	0.749	0.0644	<0.00050	0.0270	0.0402	76.9		
	10/12/2016	11:29:32 AM	IST-M-2-1130-034-0562		SS-390 BD	AI100New	16.15	0.857	4.60	0.213	0.544	0.0467	0.0473	0.811	0.0632	<0.00050	0.0309	0.0356	76.6			
	10/12/2016	11:26:26 AM	IST-M-1		SS-390 BD	AI100New	15.78	0.880	4.61	0.219	0.523	0.0477	0.0455	0.792	0.0635	<0.00050	0.0294	0.0359	77.0			
	10/12/2016	11:23:53 AM	IST-RF8		KB 380 CH	AI100New	8.62	0.930	3.38	0.245	0.00827	0.0503	0.0760	1.58	0.0471	<0.00050	0.0637	0.0338	85.0			
	10/12/2016	11:21:52 AM	IST-RF4		KB 380 CH	AI100New	8.89	0.977	3.42	0.254	0.00879	0.0520	0.0774	1.59	0.0456	0.00069	0.0652	0.0334	84.6			
	10/12/2016	11:19:44 AM	IST-RF7		SS-390 BD	AI100New	16.54	0.863	4.78	0.207	0.507	0.0455	0.0507	0.779	0.0626	<0.00050	0.0314	0.0364	76.1			
	10/12/2016	11:17:41 AM	IST-RF6		SS-390 BD	AI100New	16.05	0.869	4.80	0.208	0.508	0.0466	0.0496	0.787	0.0636	<0.00050	0.0305	0.0363	76.6			
	10/12/2016	10:50:25 AM	IST-RF6		SS-390 BD	AI100New	16.61	0.859	4.77	0.210	0.511	0.0467	0.0488	0.778	0.0627	<0.00050	0.0303	0.0366	76.0			
	10/12/2016	10:47:45 AM	SS-390 BD		AI100New	17.45	0.848	4.50	0.239	0.620	0.0505	0.117	0.449	0.828	<0.00050	0.0778	0.0857	75.5				
	10/12/2016	10:45:28 AM	KB 380 CH		AI100New	7.77	0.607	4.13	0.568	0.0525	0.0309	0.109	0.870	0.0336	<0.00050	0.180	0.0757	85.6				
	10/12/2016	10:40:55 AM	RF6		SS-390 BD	AI100New	16.40	0.795	4.77	0.195	0.487	0.0429	0.0464	0.767	0.0566	<0.00050	0.0295	0.0354	76.4			
	10/12/2016	10:09:18 AM	TRIALCO		HT# J10A	SS-390 BD	AI100New	16.50	0.795	4.43	0.259	0.579	0.0421	0.0190	0.654	0.0974	<0.00050	0.0142	0.00771	76.6		
	10/12/2016	12:15:59 AM	DCM19	RFBC3P7L328AE 3RD		KB 380 CH	AI100New	8.71	0.845	3.12	0.253	0.00637	0.0487	0.0682	1.47	0.0436	0.00094	0.0587	0.0221	85.4		
	10/12/2016	12:14:38 AM	DCM14	37778-07 3RD		KB 380 CH	AI100New	8.69	0.846	3.16	0.251	0.00385	0.0483	0.0690	1.47	0.0433	0.00105	0.0595	0.0222	85.3		
	10/12/2016	12:13:15 AM	DCM7	04752990AB 3RD		KB 380 CH	AI100New	8.63	0.847	3.15	0.252	0.00539	0.0487	0.0695	1.47	0.0440	0.00063	0.0601	0.0223	85.4		
	10/12/2016	12:11:47 AM	DCM6	SET-UP 3RD		KB 380 CH	AI100New	8.79	0.875	3.21	0.254	<0.00100	0.0499	0.0701	1.46	0.0427	0.00085	0.0603	0.0233	85.2		
	10/12/2016	12:10:26 AM	DCM5	40566-07 3RD		KB 380 CH	AI100New	8.75	0.857	3.17	0.252	0.00414	0.0486	0.0687	1.47	0.0435	0.00068	0.0598	0.0228	85.2		
	10/12/2016	12:08:54 AM	DCM21	SET-UP 3RD	DOWN	SS-390 BD	AI100New	16.14	0.768	4.54	0.221	0.332	0.0445	0.0356	0.738	0.0575	0.00066	0.0256	0.0422	77.1		
	10/12/2016	12:03:20 AM	DCM18	242664R 3RD		SS-390 BD	AI100New	16.66	0.757	4.60	0.198	0.482	0.0413	0.0475	0.740	0.0558	<0.00050	0.0288	0.0337	76.4		
	10/12/2016	12:01:56 AM	DCM17	24231650 3RD		SS-390 BD	AI100New	16.29	0.772	4.68	0.199	0.491	0.0419	0.0476	0.750	0.0559	<0.00050	0.0295	0.0341	76.6		
	10/12/2016	12:01:16 AM	DCM16	4180-034-0560 3RD		SS-390 BD	AI100New	16.31	0.770	4.66	0.198	0.478	0.0419	0.0472	0.741	0.0560	0.00066	0.0288	0.0352	76.6		
	10/11/2016	11:59:15 PM	DCM15	24268344R 3RD		SS-390 BD	AI100New	16.45	0.756	4.67	0.197	0.482	0.0415	0.0468	0.746	0.0559	<0.00050	0.0290	0.0346	76.5		
	10/11/2016	11:55:18 PM	DCM10	24224026 3RD		SS-390 BD	AI100New	16.90	0.750	4.41	0.188	0.463	0.0405	0.0428	0.731	0.0544	<0.00050	0.0261	0.0304	76.4		
	10/11/2016	11:52:29 PM	DCM8	24224026 3RD	DOWN	SS-390 BD	AI100New	16.45	0.745	4.51	0.200	0.394	0.0428	0.0319	0.718	0.0560	<0.00050	0.0245	0.0373	76.8		
	10/11/2016	11:49:26 PM	DCM2	1130-034-0562 3RD		SS-390 BD	AI100New	16.17	0.761	4.49	0.199	0.465	0.0424	0.0439	0.786	0.0560	0.00063	0.0291	0.0331	76.9		
	10/11/2016	11:47:25 PM	DCM1	24224026 3RD		SS-390 BD	AI100New	16.68	0.772	4.38	0.194	0.455	0.0419	0.0418	0.746	0.0551	<0.00050	0.0269	0.0298	76.6		
	10/11/2016	11:39:43 PM	RF=7	3RD		SS-390 BD	AI100New	16.38	0.753	4.53	0.194	0.474	0.0412	0.0455	0.739	0.0556	0.00072	0.0279	0.0322	76.7		
	10/11/2016	11:36:56 PM	RF=6	3RD		SS-390 BD	AI100New	16.57	0.751	4.54	0.195	0.456	0.0415	0.0453	0.749	0.0553	<0.00050	0.0283	0.0329	76.5		
	10/11/2016	11:35:28 PM	RF=8	3RD		KB 380 CH	AI100New	8.58	0.823	3.11	0.252	<0.00100	0.0508	0.0678	1.45	0.0455	0.00064	0.0589	0.0218	85.5		
	10/11/2016	11:34:05 PM	RF=4	3RD		KB 380 CH	AI100New	8.60	0.826	3.14	0.245	0.00664	0.0479	0.0668	1.51	0.0432	<0.00050	0.0577	0.0221	85.4		
	10/11/2016	9:46:30 PM	MACH 19 2ND	7L328		KB 380 CH	AI100New	9.11	0.894	3.25	0.262	0.00615	0.0483	0.0725	1.62	0.0452	0.00106	0.0656	0.0241	84.6		
	10/11/2016	9:44:48 PM	MACH 14 2ND	3778-07		KB 380 CH	AI100New	9.11	0.888	3.22	0.259	0.00207	0.0497	0.0705	1.55	0.0449	0.00117	0.0638	0.0232	84.7		

102761 Analyses

1 marked analyses

SUPER

Num

Basic

Terminal1

W

D

2:18 PM 8/6/2018

DIA 2000 SE - Analyses management system

File Edit View Formats Extras Basic files Configuration Help

Files Print Statistics Export Filter View Details Login Help Home Web

Standard [no Selection] Start

Date	Time	SampleNo	Comment	Quality	Method	Si	Fe	Cu	Mn	Mg	Cr	Ni	Zn	Ti	Cd	Pb	Sn	Al	SF
10/12/2016	12:47:20 PM	40915	INCOMING	KB 380 CH	AI100New	8.74	0.908	3.42	0.247	0.00599	0.0470	0.0739	1.46	0.0447	<0.00050	0.0595	0.0321	85.0	
10/12/2016	12:07:47 PM	IST-M-19-328		KB 380 CH	AI100New	8.68	0.931	3.32	0.251	0.0121	0.0506	0.0752	1.58	0.0465	0.00076	0.0620	0.0330	85.0	
10/12/2016	12:05:40 PM	IST-M-14-37778-07		KB 380 CH	AI100New	8.76	0.940	3.31	0.255	0.00736	0.0514	0.0755	1.57	0.0457	0.00058	0.0610	0.0325	84.9	
10/12/2016	12:03:03 PM	IST-M-7																	
10/12/2016	12:00:46 PM	IST-M-4																	
10/12/2016	11:58:35 AM	IST-M-3																	
10/12/2016	11:56:14 AM	IST-M-2																	
10/12/2016	11:53:50 AM	IST-M-1																	
10/12/2016	11:49:37 AM	IST-M-1																	
10/12/2016	11:45:11 AM	IST-M-1																	
10/12/2016	11:42:36 AM	IST-M-1																	
10/12/2016	11:34:14 AM	IST-M-1																	
10/12/2016	11:32:07 AM	IST-M-1																	
10/12/2016	11:29:32 AM	IST-M-2																	
10/12/2016	11:26:26 AM																		
10/12/2016	11:23:53 AM																		
10/12/2016	11:21:52 AM	IST-RF6																	
10/12/2016	11:19:44 AM	IST-RF7																	
10/12/2016	11:17:41 AM	IST-RF6																	
10/12/2016	10:50:25 AM	IST-RF6																	
10/12/2016	10:47:45 AM	SS-390 B																	
10/12/2016	10:45:28 AM	KB 380 CH																	
10/12/2016	10:40:55 AM	RF6																	
10/12/2016	10:09:18 AM	TRIALCD																	
10/12/2016	12:15:59 AM	DCM13																	
10/12/2016	12:14:38 AM	DCM14																	
10/12/2016	12:13:15 AM	DCM7																	
10/12/2016	12:11:47 AM	DCM6																	
10/12/2016	12:10:26 AM	DCM5																	
10/12/2016	12:08:54 AM	DCM21																	
10/12/2016	12:03:20 AM	DCM18																	
10/12/2016	12:01:56 AM	DCM17																	
10/12/2016	12:01:16 AM	DCM16																	
10/11/2016	11:59:15 PM	DCM15																	
10/11/2016	11:55:18 PM	DCM10																	
10/11/2016	11:52:29 PM	DCM8																	
10/11/2016	11:49:26 PM	DCM2																	
10/11/2016	11:47:25 PM	DCM1	24224026	3RD	SS-390 BD	AI100New	16.68	0.772	4.38	0.194	0.455	0.0419	0.0418	0.746	0.0551	<0.00050	0.0269	0.0298	76.6
10/11/2016	11:39:43 PM	RF=7	3RD		SS-390 BD	AI100New	16.38	0.753	4.53	0.194	0.474	0.0412	0.0455	0.739	0.0556	0.00072	0.0279	0.0322	76.7
10/11/2016	11:36:56 PM	RF=6	3RD		SS-390 BD	AI100New	16.57	0.751	4.54	0.195	0.456	0.0415	0.0453	0.749	0.0553	<0.00050	0.0283	0.0329	76.5
10/11/2016	11:35:28 PM	RF=8	3RD		KB 380 CH	AI100New	8.58	0.823	3.11	0.252	<0.00100	0.0508	0.0678	1.45	0.0455	0.00064	0.0589	0.0218	85.5
10/11/2016	11:34:05 PM	RF=4	3RD		KB 380 CH	AI100New	8.60	0.826	3.14	0.245	0.00664	0.0479	0.0668	1.51	0.0432	<0.00050	0.0577	0.0221	85.4
10/11/2016	9:46:30 PM	MACH 19 2ND 7L328			KB 380 CH	AI100New	9.11	0.894	3.25	0.262	0.00615	0.0483	0.0725	1.62	0.0452	0.00106	0.0556	0.0241	84.6
10/11/2016	9:44:48 PM	MACH 14 2ND 3778-07			KB 380 CH	AI100New	9.11	0.888	3.22	0.259	0.00207	0.0497	0.0705	1.55	0.0449	0.00117	0.0638	0.0232	84.7

102761 Analyses 1 marked analyses SUPER Num Basic Terminal:1

2:19 PM 8/6/2018

DIA 2000 SE - Analyses management system

File Edit View Formats Extras Basic files Configuration Help

Files Print Statistics Export Filter View Details Login Help Home Web

Standard [no Selection] Start

Date	Time	SampleNo	Comment	Quality	Method	Si	Fe	Cu	Mn	Mg	Cr	Ni	Zn	Ti	Cd	Pb	Sn	Al	SF
10/12/2016	12:47:20 PM	40915	INCOMINI KB 380 CH	AI100New	8.74	0.908	3.42	0.247	0.00599	0.0470	0.0739	1.46	0.0447	<0.00050	0.0595	0.0321	85.0		
10/12/2016	12:07:47 PM	IST-M-19-328	KB 380 CH	AI100New	8.69	0.931	3.32	0.251	0.0121	0.0506	0.0752	1.58	0.0465	0.00076	0.0620	0.0330	85.0		
10/12/2016	12:05:40 PM	IST-M-14-37778-07	KB 380 CH	AI100New	8.76	0.940	3.31	0.255	0.00736	0.0514	0.0755	1.57	0.0457	0.00058	0.0610	0.0325	84.9		
10/12/2016	12:03:03 PM	IST-M-7-2990	KB 380 CH	AI100New	8.88	0.955	3.40	0.255	0.0116	0.0509	0.0776	1.60	0.0444	0.00062	0.0643	0.0341	84.6		
10/12/2016	12:00:46 PM	IST-M-6-90-BE	KB 380 CH	AI100New	8.84	0.952	3.37	0.249	<0.00100	0.0516	0.0768	1.54	0.0460	0.00091	0.0612	0.0328	84.8		
10/12/2016	11:58:35 AM	IST-M-5-4056																	
10/12/2016	11:56:14 AM	IST-M-21																	
10/12/2016	11:53:50 AM	IST-M-18-24																	
10/12/2016	11:49:37 AM	IST-M-17-18																	
10/12/2016	11:45:11 AM	IST-M-16-418																	
10/12/2016	11:42:36 AM	IST-M-15-83																	
10/12/2016	11:34:14 AM	IST-M-10-402																	
10/12/2016	11:32:07 AM	IST-M-9-402																	
10/12/2016	11:29:32 AM	IST-M-2-1130																	
10/12/2016	11:26:26 AM																		
10/12/2016	11:23:53 AM																		
10/12/2016	11:21:52 AM	IST-RF4																	
10/12/2016	11:19:44 AM	IST-RF7																	
10/12/2016	11:17:41 AM	IST-RF6																	
10/12/2016	10:50:25 AM	IST-RF6																	
10/12/2016	10:47:45 AM	SS-390 BD																	
10/12/2016	10:45:28 AM	KB 380 CH																	
10/12/2016	10:40:55 AM	RF6																	
10/12/2016	10:09:18 AM	TRIALCD																	
10/12/2016	12:15:59 AM	DCM19 RFBC3																	
10/12/2016	12:14:38 AM	DCM14 37778																	
10/12/2016	12:13:15 AM	DCM7 047529																	
10/12/2016	12:11:47 AM	DCM6 SET-UF																	
10/12/2016	12:10:26 AM	DCM5 40566-0																	
10/12/2016	12:08:54 AM	DCM21 SET-UF																	
10/12/2016	12:03:20 AM	DCM18 24266																	
10/12/2016	12:01:56 AM	DCM17 24231																	
10/12/2016	12:01:16 AM	DCM16 4180-0																	
10/11/2016	11:59:15 PM	DCM15 24268																	
10/11/2016	11:55:18 PM	DCM10 24224																	
10/11/2016	11:52:29 PM	DCM8 24224026 3RD	DOWN	SS-390 BD	AI100New	16.45	0.745	4.51	0.200	0.394	0.0428	0.0319	0.718	0.0560	<0.00050	0.0245	0.0373	76.8	
10/11/2016	11:49:26 PM	DCM2 1130-034-0562 3RD		SS-390 BD	AI100New	16.17	0.761	4.49	0.199	0.465	0.0424	0.0439	0.786	0.0560	0.00063	0.0291	0.0331	76.9	
10/11/2016	11:47:25 PM	DCM1 24224026 3RD		SS-390 BD	AI100New	16.68	0.772	4.38	0.194	0.455	0.0419	0.0418	0.746	0.0551	<0.00050	0.0269	0.0298	76.6	
10/11/2016	11:39:43 PM	RF=7 3RD		SS-390 BD	AI100New	16.38	0.753	4.53	0.194	0.474	0.0412	0.0455	0.739	0.0556	0.00072	0.0279	0.0322	76.7	
10/11/2016	11:36:56 PM	RF=6 3RD		SS-390 BD	AI100New	16.57	0.751	4.54	0.195	0.456	0.0415	0.0453	0.749	0.0553	<0.00050	0.0283	0.0329	76.5	
10/11/2016	11:35:28 PM	RF=8 3RD		KB 380 CH	AI100New	8.58	0.823	3.11	0.252	<0.00100	0.0508	0.0678	1.45	0.0455	0.00064	0.0589	0.0218	85.5	
10/11/2016	11:34:05 PM	RF=4 3RD		KB 380 CH	AI100New	8.60	0.826	3.14	0.245	0.00664	0.0479	0.0668	1.51	0.0432	<0.00050	0.0577	0.0221	85.4	
10/11/2016	9:46:30 PM	MACH 19 2ND 7L328		KB 380 CH	AI100New	9.11	0.894	3.25	0.262	0.00615	0.0483	0.0725	1.62	0.0452	0.00106	0.0656	0.0241	84.6	
10/11/2016	9:44:48 PM	MACH 14 2ND 3778-07		KB 380 CH	AI100New	9.11	0.888	3.22	0.259	0.00207	0.0497	0.0705	1.55	0.0449	0.00117	0.0638	0.0232	84.7	

102761 Analyses 1 marked analyses SUPER Num Basic Terminal:1

2:19 PM 8/6/2018

DIA 2000 SE - Analyses management system

File Edit View Formats Extras Basic files Configuration Help

Files Print Statistics Export Filter View Details Login Help Home Web

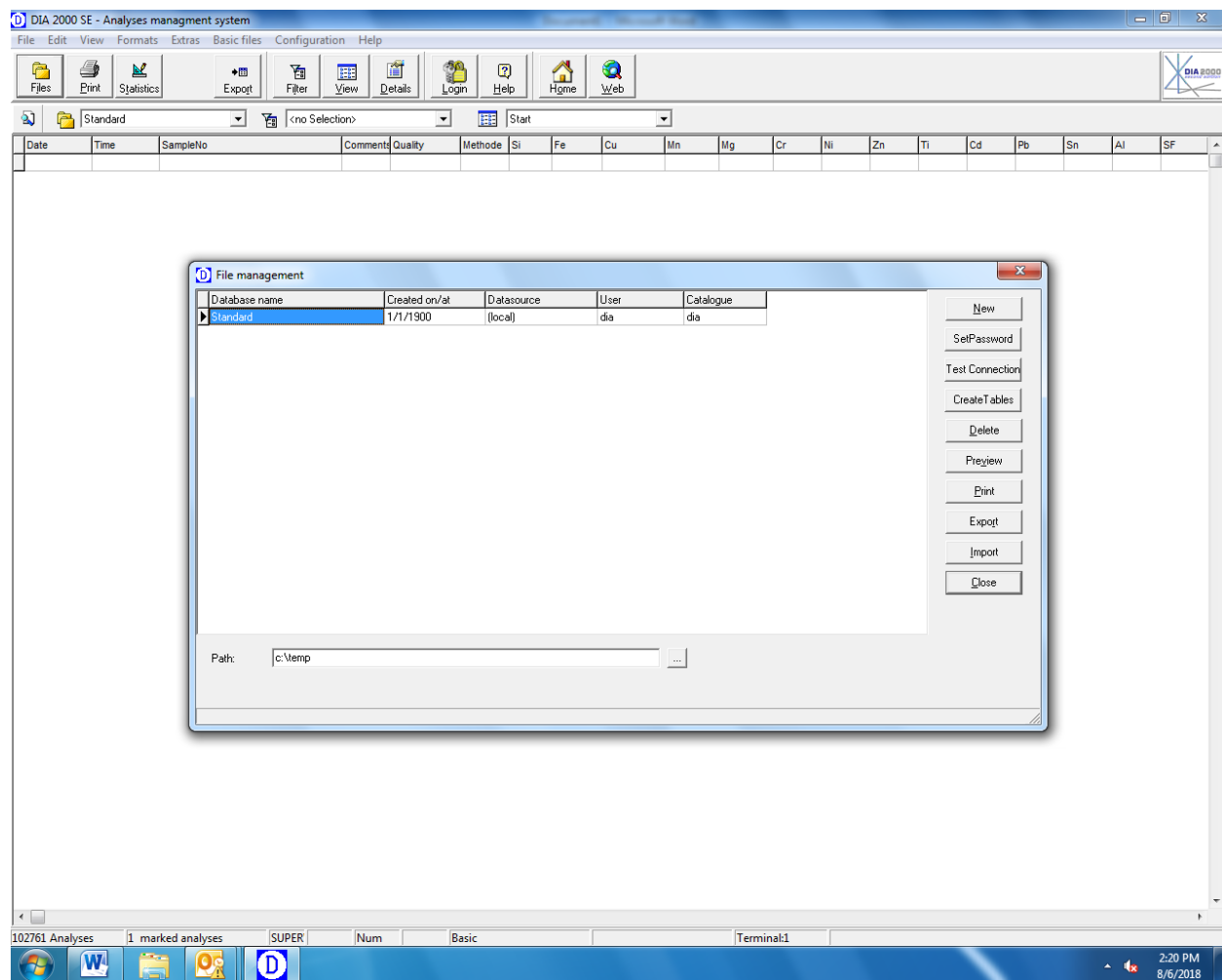
Standard [no Selection] Start

Date	Time	SampleNo	Comment	Quality	Method	Si	Fe	Cu	Mn	Mg	Cr	Ni	Zn	Ti	Cd	Pb	Sn	Al	SF
10/12/2016	12:07:47 PM	40915	INCOMINI KB 380 CH	AI100New	8.74	0.908	3.42	0.247	0.00599	0.0470	0.0739	1.46	0.0447	<0.00050	0.0595	0.0321	85.0		
10/12/2016	12:07:47 PM	IST-M-19-328	KB 380 CH	AI100New	8.69	0.931	3.32	0.251	0.0121	0.0506	0.0752	1.58	0.0465	0.00076	0.0620	0.0330	85.0		
10/12/2016	12:05:40 PM	IST-M-14-37778-07	KB 380 CH	AI100New	8.76	0.940	3.31	0.255	0.00736	0.0514	0.0755	1.57	0.0457	0.00058	0.0610	0.0325	84.9		
10/12/2016	12:03:03 PM	IST-M-7-2990	KB 380 CH	AI100New	8.88	0.955	3.40	0.255	0.0116	0.0509	0.0776	1.60	0.0444	0.00062	0.0643	0.0341	84.6		
10/12/2016	12:00:46 PM	IST-M-6-90-BE	KB 380 CH	AI100New	8.84	0.952	3.37	0.249	<0.00100	0.0516	0.0768	1.54	0.0460	0.00091	0.0612	0.0328	84.8		
10/12/2016	11:58:35 AM	IST-M-5-40566-07	KB 380 CH	AI100New	8.84	0.952	3.37	0.249	<0.00100	0.0516	0.0768	1.54	0.0460	0.00091	0.0612	0.0328	84.8		
10/12/2016	11:56:14 AM	IST-M-21-...	KB 380 CH	AI100New	8.84	0.952	3.37	0.249	<0.00100	0.0516	0.0768	1.54	0.0460	0.00091	0.0612	0.0328	84.8		
10/12/2016	11:53:50 AM	IST-M-18-242664-R	KB 380 CH	AI100New	8.84	0.952	3.37	0.249	<0.00100	0.0516	0.0768	1.54	0.0460	0.00091	0.0612	0.0328	84.8		
10/12/2016	11:49:37 AM	IST-M-17-1650	KB 380 CH	AI100New	8.84	0.952	3.37	0.249	<0.00100	0.0516	0.0768	1.54	0.0460	0.00091	0.0612	0.0328	84.8		
10/12/2016	11:45:11 AM	IST-M-16-4180-034-0560	KB 380 CH	AI100New	8.84	0.952	3.37	0.249	<0.00100	0.0516	0.0768	1.54	0.0460	0.00091	0.0612	0.0328	84.8		
10/12/2016	11:42:36 AM	IST-M-15-8344	KB 380 CH	AI100New	8.84	0.952	3.37	0.249	<0.00100	0.0516	0.0768	1.54	0.0460	0.00091	0.0612	0.0328	84.8		
10/12/2016	11:34:14 AM	IST-M-10-4026	KB 380 CH	AI100New	8.84	0.952	3.37	0.249	<0.00100	0.0516	0.0768	1.54	0.0460	0.00091	0.0612	0.0328	84.8		
10/12/2016	11:32:07 AM	IST-M-9-4026	KB 380 CH	AI100New	8.84	0.952	3.37	0.249	<0.00100	0.0516	0.0768	1.54	0.0460	0.00091	0.0612	0.0328	84.8		
10/12/2016	11:29:32 AM	IST-M-2-1130-034-0562	KB 380 CH	AI100New	8.84	0.952	3.37	0.249	<0.00100	0.0516	0.0768	1.54	0.0460	0.00091	0.0612	0.0328	84.8		
10/12/2016	11:26:26 AM	IST-M-1-4026	KB 380 CH	AI100New	8.84	0.952	3.37	0.249	<0.00100	0.0516	0.0768	1.54	0.0460	0.00091	0.0612	0.0328	84.8		
10/12/2016	11:23:53 AM	IST-M-1-4026	KB 380 CH	AI100New	8.84	0.952	3.37	0.249	<0.00100	0.0516	0.0768	1.54	0.0460	0.00091	0.0612	0.0328	84.8		
10/12/2016	11:21:52 AM	IST-RF4	KB 380 CH	AI100New	8.84	0.952	3.37	0.249	<0.00100	0.0516	0.0768	1.54	0.0460	0.00091	0.0612	0.0328	84.8		
10/12/2016	11:19:44 AM	IST-RF7	KB 380 CH	AI100New	8.84	0.952	3.37	0.249	<0.00100	0.0516	0.0768	1.54	0.0460	0.00091	0.0612	0.0328	84.8		
10/12/2016	11:17:41 AM	IST-RF6	KB 380 CH	AI100New	8.84	0.952	3.37	0.249	<0.00100	0.0516	0.0768	1.54	0.0460	0.00091	0.0612	0.0328	84.8		
10/12/2016	10:50:25 AM	IST-RF6	KB 380 CH	AI100New	8.84	0.952	3.37	0.249	<0.00100	0.0516	0.0768	1.54	0.0460	0.00091	0.0612	0.0328	84.8		
10/12/2016	10:47:45 AM	SS-390 BD	KB 380 CH	AI100New	8.84	0.952	3.37	0.249	<0.00100	0.0516	0.0768	1.54	0.0460	0.00091	0.0612	0.0328	84.8		
10/12/2016	10:45:28 AM	KB 380 CH	KB 380 CH	AI100New	8.84	0.952	3.37	0.249	<0.00100	0.0516	0.0768	1.54	0.0460	0.00091	0.0612	0.0328	84.8		
10/12/2016	10:40:55 AM	RF6	KB 380 CH	AI100New	8.84	0.952	3.37	0.249	<0.00100	0.0516	0.0768	1.54	0.0460	0.00091	0.0612	0.0328	84.8		
10/12/2016	10:09:18 AM	TRIALCD	KB 380 CH	AI100New	8.84	0.952	3.37	0.249	<0.00100	0.0516	0.0768	1.54	0.0460	0.00091	0.0612	0.0328	84.8		
10/12/2016	12:15:59 AM	DCM19 RFBC3P7L328AE 3RD	KB 380 CH	AI100New	8.84	0.952	3.37	0.249	<0.00100	0.0516	0.0768	1.54	0.0460	0.00091	0.0612	0.0328	84.8		
10/12/2016	12:14:38 AM	DCM14 37778-07 3RD	KB 380 CH	AI100New	8.84	0.952	3.37	0.249	<0.00100	0.0516	0.0768	1.54	0.0460	0.00091	0.0612	0.0328	84.8		
10/12/2016	12:13:15 AM	DCM7 04752990AB 3RD	KB 380 CH	AI100New	8.84	0.952	3.37	0.249	<0.00100	0.0516	0.0768	1.54	0.0460	0.00091	0.0612	0.0328	84.8		
10/12/2016	12:11:47 AM	DCM6 SET-UP 3RD	KB 380 CH	AI100New	8.84	0.952	3.37	0.249	<0.00100	0.0516	0.0768	1.54	0.0460	0.00091	0.0612	0.0328	84.8		
10/12/2016	12:10:26 AM	DCM5 40566-07 3RD	KB 380 CH	AI100New	8.84	0.952	3.37	0.249	<0.00100	0.0516	0.0768	1.54	0.0460	0.00091	0.0612	0.0328	84.8		
10/12/2016	12:08:54 AM	DCM21 SET-UP 3RD	KB 380 CH	AI100New	8.84	0.952	3.37	0.249	<0.00100	0.0516	0.0768	1.54	0.0460	0.00091	0.0612	0.0328	84.8		
10/12/2016	12:03:20 AM	DCM18 242664R 3RD	KB 380 CH	AI100New	8.84	0.952	3.37	0.249	<0.00100	0.0516	0.0768	1.54	0.0460	0.00091	0.0612	0.0328	84.8		
10/12/2016	12:01:56 AM	DCM17 24231650 3RD	KB 380 CH	AI100New	8.84	0.952	3.37	0.249	<0.00100	0.0516	0.0768	1.54	0.0460	0.00091	0.0612	0.0328	84.8		
10/12/2016	12:01:16 AM	DCM16 4180-034-0560 3RD	KB 380 CH	AI100New	8.84	0.952	3.37	0.249	<0.00100	0.0516	0.0768	1.54	0.0460	0.00091	0.0612	0.0328	84.8		
10/11/2016	11:59:15 PM	DCM15 24268344R 3RD	KB 380 CH	AI100New	8.84	0.952	3.37	0.249	<0.00100	0.0516	0.0768	1.54	0.0460	0.00091	0.0612	0.0328	84.8		
10/11/2016	11:55:18 PM	DCM10 24224026 3RD	KB 380 CH	AI100New	8.84	0.952	3.37	0.249	<0.00100	0.0516	0.0768	1.54	0.0460	0.00091	0.0612	0.0328	84.8		
10/11/2016	11:52:29 PM	DCM8 24224026 3RD	KB 380 CH	AI100New	8.84	0.952	3.37	0.249	<0.00100	0.0516	0.0768	1.54	0.0460	0.00091	0.0612	0.0328	84.8		
10/11/2016	11:49:26 PM	DCM2 1130-034-0562 3RD	KB 380 CH	AI100New	8.84	0.952	3.37	0.249	<0.00100	0.0516	0.0768	1.54	0.0460	0.00091	0.0612	0.0328	84.8		
10/11/2016	11:47:25 PM	DCM1 24224026 3RD	KB 380 CH	AI100New	8.84	0.952	3.37	0.249	<0.00100	0.0516	0.0768	1.54	0.0460	0.00091	0.0612	0.0328	84.8		
10/11/2016	11:39:43 PM	RF=7 3RD	KB 380 CH	AI100New	8.84	0.952	3.37	0.249	<0.00100	0.0516	0.0768	1.54	0.0460	0.00091	0.0612	0.0328	84.8		
10/11/2016	11:36:56 PM	RF=6 3RD	KB 380 CH	AI100New	8.84	0.952	3.37	0.249	<0.00100	0.0516	0.0768	1.54	0.0460	0.00091	0.0612	0.0328	84.8		
10/11/2016	11:35:28 PM	RF=8 3RD	KB 380 CH	AI100New	8.84	0.952	3.37	0.249	<0.00100	0.0516	0.0768	1.54	0.0460	0.00091	0.0612	0.0328	84.8		
10/11/2016	11:34:05 PM	RF=4 3RD	KB 380 CH	AI100New	8.84	0.952	3.37	0.249	<0.00100	0.0516	0.0768	1.54	0.0460	0.00091	0.0612	0.0328	84.8		
10/11/2016	9:46:30 PM	MACH 19 2ND 7L328	KB 380 CH	AI100New	8.84	0.952	3.37	0.249	<0.00100	0.0516	0.0768	1.54	0.0460	0.00091	0.0612	0.0328	84.8		
10/11/2016	9:44:48 PM	MACH 14 2ND 3778-07	KB 380 CH	AI100New	8.84	0.952	3.37	0.249	<0.00100	0.0516	0.0768	1.54	0.0460	0.00091	0.0612	0.0328	84.8		

102761 Analyses 1 marked analyses SUPER Num Basic Terminal:1

2:20 PM 8/6/2018





QMatrix

Method Analysis Edit View Standardization Calibration Extras Help

Concentrations

Sample Identification										
	Quality	Fe	Cu	Mn	Mg	Cr	Ni	Zn	Ti	Cd
	%	%	%	%	%	%	%	%	%	%
1										
2										
3										
4										
5										
↑										
∅										
↓										
σ										
∪										

Alarmsystem

Software Exception: [QEXG\_SOCKET] Timeout while connecting to host: IP [192.168.10.50] Port [1500] Code: 0!

```
CQSocket::Connect()
CQDLClient::ConnectAndSend
CQDLClient::DoTransfer( C_QDL_GIVE_QSOURCE_VERSION, CQDLMessage* )
CQIC_SubSys::DoQDLTransfer()
CQIC_SubSys_Source::GiveQSourceVersion()
CQICControl::Init()
CQIC_Shell::Open()
CQIC_Shell::OpenThreadFunction()
CNewLabView::OnMsgWM_QIC_OPENED_BY_THREAD(1)
```

Errorcode

Decimal: 0

Hex: 0

Hex: 8/6/2018

2:21:31 PM

OK Retry Ignore Cancel

	Pb	Sn
	%	%
1		
2		
3		
4		
5		
↑		
∅		
↓		
σ		
∪		

For Help, press F1

Mask: 0 Measurements: 17064 Instrument: INITIALIZING Method SUPERVISOR

2:21 PM 8/6/2018

QMatrix

Method Analysis Edit View Standardization Calibration Extras Help

Concentrations

Sample Identification										
Quality	Si	Fe	Cu	Mn	Mg	Cr	Ni	Zn	Ti	Cd
%	%	%	%	%	%	%	%	%	%	%
1										
2										
3										
4										
5										
↑										
∅										
↓										
σ										
u										
	Pb									
	%									
1										
2										
3										
4										
5										
↑										
∅										
↓										
σ										
u										

Measurement channels

Sequence	Used	Channelsymbol	Integrator	Source	Frequency	Mask
QIAI41A 200 01000	<input checked="" type="checkbox"/>	Al2660-u	013	00041	200 Hz	4200
	<input type="checkbox"/>	Cd2288-u	014			
	<input type="checkbox"/>	Cr4254-u	003			
	<input type="checkbox"/>	Cu3247-u	010			
	<input checked="" type="checkbox"/>	Fe3719-u	007			
	<input checked="" type="checkbox"/>	Mg3829-u	006			
	<input type="checkbox"/>	Mn2933-u	012			
	<input type="checkbox"/>	Ni3524-u	008			
	<input type="checkbox"/>	Pb4057-u	004			
	<input checked="" type="checkbox"/>	Sn3175-u	011			
	<input type="checkbox"/>	Ti3372-u	009			
	<input checked="" type="checkbox"/>	Zn4810-u	002			
QIAI40S 300 01000	<input checked="" type="checkbox"/>	Al2660-o	013	00040	300 Hz	
	<input checked="" type="checkbox"/>	Cd2288-o	014			
	<input checked="" type="checkbox"/>	Cr4254-o	003			
	<input checked="" type="checkbox"/>	Cu3247-o	010			
	<input checked="" type="checkbox"/>	Cu5105-o	001			
	<input checked="" type="checkbox"/>	Fe3719-o	007			
	<input checked="" type="checkbox"/>	Mg3829-o	006			
	<input checked="" type="checkbox"/>	Mn2933-o	012			
	<input checked="" type="checkbox"/>	Ni3524-o	008			
	<input checked="" type="checkbox"/>	Pb4057-o	004			
	<input checked="" type="checkbox"/>	Si3905-o	005			
	<input checked="" type="checkbox"/>	Sn3175-o	011			
	<input checked="" type="checkbox"/>	Ti3372-o	009			
	<input checked="" type="checkbox"/>	Zn4810-o	002			

Meas. Parameters Chan. Referencing Concentration Ranges Standardization Samples

Close

For Help, press F1

Mask: 0 Measurements: 17064 Instrument: FAILURE

Alt00New SUPERVISOR

2:22 PM 8/6/2018

QMatrix

Method Analysis Edit View Standardization Calibration Extras Help

Concentrations

Sample Identification

Quality	Si	Fe	Cu	Mn	Mg	Cr	Ni	Zn	Ti	Cd
%	%	%	%	%	%	%	%	%	%	%
1										
2										
3										
4										
5										
↑										
∅										
↓										
σ										
u										
Pb										
%										
1										
2										
3										
4										
5										
↑										
∅										
↓										
σ										
u										

Measurement channels

Sequence	Reference	Used	Channelsymbol	Matrix Correction	Wavelength	Linetype
QIA41A 200 01000	Al2660-u	<input checked="" type="checkbox"/>	Zn4810-u	<input checked="" type="checkbox"/>	481.1875 nm	I
		<input type="checkbox"/>	Cd2288-u	<input checked="" type="checkbox"/>	228.8728 nm	I
		<input type="checkbox"/>	Cr4254-u	<input checked="" type="checkbox"/>	425.5529 nm	I
		<input type="checkbox"/>	Cu3247-u	<input checked="" type="checkbox"/>	324.8477 nm	I
		<input checked="" type="checkbox"/>	Fe3719-u	<input checked="" type="checkbox"/>	372.0993 nm	I
		<input checked="" type="checkbox"/>	Mg3829-u	<input checked="" type="checkbox"/>	383.0437 nm	I
		<input type="checkbox"/>	Mn2933-u	<input checked="" type="checkbox"/>	293.3918 nm	II
		<input type="checkbox"/>	Ni3524-u	<input checked="" type="checkbox"/>	352.5548 nm	I
		<input type="checkbox"/>	Pb4057-u	<input checked="" type="checkbox"/>	405.8966 nm	I
		<input type="checkbox"/>	Sn3175-u	<input checked="" type="checkbox"/>	317.5969 nm	I
		<input type="checkbox"/>	Ti3372-u	<input checked="" type="checkbox"/>	337.3769 nm	II
QIA40S 300 01000	Al2660-o	<input checked="" type="checkbox"/>	Zn4810-o	<input checked="" type="checkbox"/>	481.1875 nm	I
		<input checked="" type="checkbox"/>	Cr4254-o	<input checked="" type="checkbox"/>	425.5529 nm	I
		<input checked="" type="checkbox"/>	Cu3247-o	<input checked="" type="checkbox"/>	324.8477 nm	I
		<input checked="" type="checkbox"/>	Cu5105-o	<input checked="" type="checkbox"/>	510.6963 nm	I
		<input checked="" type="checkbox"/>	Fe3719-o	<input checked="" type="checkbox"/>	372.0993 nm	I
		<input checked="" type="checkbox"/>	Mg3829-o	<input checked="" type="checkbox"/>	383.0437 nm	I
		<input checked="" type="checkbox"/>	Mn2933-o	<input checked="" type="checkbox"/>	293.3918 nm	II
		<input checked="" type="checkbox"/>	Ni3524-o	<input checked="" type="checkbox"/>	352.5548 nm	I
		<input checked="" type="checkbox"/>	Pb4057-o	<input checked="" type="checkbox"/>	405.8966 nm	I
		<input checked="" type="checkbox"/>	Si3905-o	<input checked="" type="checkbox"/>	390.6629 nm	I
		<input checked="" type="checkbox"/>	Sn3175-o	<input checked="" type="checkbox"/>	317.5969 nm	I
		<input checked="" type="checkbox"/>	Ti3372-o	<input checked="" type="checkbox"/>	337.3769 nm	II
		<input checked="" type="checkbox"/>	Cd2288-o	<input checked="" type="checkbox"/>	228.8728 nm	I

Meas. Parameters Chan. Referencing Concentration Ranges Standardization Samples

Close

For Help, press F1

Mask: 0 Measurements: 17064 Instrument: FAILURE

Alt00New SUPERVISOR

2:22 PM 8/6/2018

QMatrix

Method Analysis Edit View Standardization Calibration Extras Help

Concentrations

Sample Identification

Quality	Si	Fe	Cu	Mn	Mg	Cr	Ni	Zn	Ti	Cd
	%	%	%	%	%	%	%	%	%	%
1										
2										
3										
4										
5										
↑										
∅										
↓										
σ										
u										
1	Pb									
2	%									
3										
4										
5										
↑										
∅										
↓										
σ										
u										

Measurement channels

Element	Used	Channelsymbol	Min Concentration	Max Concentration
Si	<input checked="" type="checkbox"/>	Si3905-o	1.00000	22.00000
Fe	<input checked="" type="checkbox"/>	Fe3719-u	0.00200	0.20000
	<input checked="" type="checkbox"/>	Fe3719-o	0.15000	3.05000
Cu	<input checked="" type="checkbox"/>	Cu3247-o	0.00100	0.45000
	<input checked="" type="checkbox"/>	Cu5105-o	0.35000	5.00000
	<input type="checkbox"/>	Cu3247-u	0.00001	100.00000
Mn	<input checked="" type="checkbox"/>	Mn2933-o	0.00100	0.70000
	<input type="checkbox"/>	Mn2933-u	0.00001	100.00000
Mg	<input checked="" type="checkbox"/>	Mg3829-u	0.00100	0.20000
	<input checked="" type="checkbox"/>	Mg3829-o	0.15000	0.70000
Cr	<input checked="" type="checkbox"/>	Cr4254-o	0.00100	0.37000
	<input type="checkbox"/>	Cr4254-u	0.00001	100.00000
Ni	<input checked="" type="checkbox"/>	Ni3524-o	0.00100	1.00000
	<input type="checkbox"/>	Ni3524-u	0.00001	100.00000
Zn	<input checked="" type="checkbox"/>	Zn4810-u	0.00100	0.20000
	<input checked="" type="checkbox"/>	Zn4810-o	0.15000	3.50000
Ti	<input checked="" type="checkbox"/>	Ti3372-o	0.00100	0.45000
	<input type="checkbox"/>	Ti3372-u	0.00001	100.00000
Cd	<input checked="" type="checkbox"/>	Cd2288-o	0.00050	0.35000
	<input type="checkbox"/>	Cd2288-u	0.00001	100.00000
Pb	<input checked="" type="checkbox"/>	Pb4057-o	0.00100	1.00000
	<input type="checkbox"/>	Pb4057-u	0.00001	100.00000
Sn	<input checked="" type="checkbox"/>	Sn3175-u	0.00100	0.12000
	<input checked="" type="checkbox"/>	Sn3175-o	0.08000	1.00000

Meas. Parameters Chan. Referencing Concentration Ranges Standardization Samples

Close

For Help, press F1

Mask: 0 Measurements: 17064 Instrument: FAILURE

Alt00New SUPERVISOR

2:22 PM 8/6/2018

QMatrix

Method Analysis Edit View Standardization Calibration Extras Help

Concentrations

Sample Identification

Quality	Si	Fe	Cu	Mn	Mg	Cr	Ni	Zn	Ti	Cd
%	%	%	%	%	%	%	%	%	%	%
1										
2										
3										
4										
5										
↑										
∅										
↓										
σ										
u										
1	Pb									
2	%									
3										
4										
5										
↑										
∅										
↓										
σ										
u										

Measurement channels

Used	Channelsymbol	Low Sample	Expected	Auto.av.abs	Auto.av.rel	High Sample	Expected	Auto.av.abs	Auto.av.rel
✓	Si3905-o	RA10/9	2872	0	0.0	RA18/92	150202	0	0.0
✓	Fe3719-o	RA10/9	13959	0	0.0	RA19/58	155289	0	0.0
✓	Fe3719-u	RA10/9	15391	0	0.0	RA18/92	373219	0	0.0
✓	Cu3247-u	RA10/9	4808	0	0.0	RA19/58	756952	0	0.0
✓	Cu5105-o	RA10/9	9659	0	0.0	RA18/92	400441	0	0.0
✓	Cu3247-o	RA10/9	4309	0	0.0	RA19/58	348253	0	0.0
✓	Mn2933-o	RA10/9	8051	0	0.0	RA18/92	187942	0	0.0
✓	Mn2933-u	RA10/9	9054	0	0.0	RA18/92	307841	0	0.0
✓	Mg3829-o	RA10/9	8867	0	0.0	RA18/92	44164	0	0.0
✓	Mg3829-u	RA10/9	10164	0	0.0	RA19/58	159791	0	0.0
✓	Cr4254-u	RA10/9	4125	0	0.0	RA19/58	257587	0	0.0
✓	Cr4254-o	RA10/9	3528	0	0.0	RA19/58	55416	0	0.0
✓	Ni3524-o	RA10/9	10060	0	0.0	RA19/58	543435	0	0.0
✓	Ni3524-u	RA10/9	11572	0	0.0	RA19/58	1600737	0	0.0
✓	Zn4810-u	RA10/9	694	0	0.0	RA18/92	11585	0	0.0
✓	Zn4810-o	RA10/9	600	0	0.0	RA19/58	71649	0	0.0
✓	Ti3372-o	RA10/9	11677	0	0.0	RA19/58	819789	0	0.0
✓	Ti3372-u	RA10/9	12954	0	0.0	RA19/58	1296804	0	0.0
✓	Cd2288-u	RA10/9	12948	0	0.0	RA19/58	75156	0	0.0
✓	Cd2288-o	RA10/9	8038	0	0.0	RA19/58	30462	0	0.0
✓	Pb4057-u	RA10/9	14116	0	0.0	RA18/92	763354	0	0.0
✓	Pb4057-o	RA10/9	11622	0	0.0	RA18/92	170351	0	0.0
✓	Sn3175-u	RA10/9	11676	0	0.0	RA18/92	428492	0	0.0
✓	Sn3175-o	RA10/9	9951	0	0.0	RA18/92	117181	0	0.0
✓	Al2660-u	RA18/92	0	0	0.0	RA10/9	0	0	0.0
✓	Al2660-o	RA18/92	0	0	0.0	RA10/9	0	0	0.0

Meas. Parameters Chan. Referencing Concentration Ranges Standardization Samples

Close

For Help, press F1

Mask: 0 Measurements: 17064 Instrument: FAILURE

Alt00New SUPERVISOR

2:22 PM 8/6/2018

QMatrix

Method Analysis Edit View Standardization Calibration Extras Help

Concentrations

Sample Identification										
Quality	Si	Fe	Cu	Mn	Mg	Cr	Ni	Zn	Ti	Cd
%	%	%	%	%	%	%	%	%	%	%
1										
2										
3										
4										
5										
↑										
∅										
↓										
σ										
u										
Pb	Sn	Al	S							
%	%	%	%	%	%	%	%	%	%	%
1										
2										
3										
4										
5										
↑										
∅										
↓										
σ										
u										

Standardization samples

Existing standardization samples

Sample name	Measured
RA10/9	<input type="checkbox"/>
RA18/92	<input type="checkbox"/>
RA19/58	<input type="checkbox"/>

Measure selected sample

Complete measurement of standardization samples

For Help, press F1

Mask: 0 Measurements: 17064 Instrument: FAILURE

Alt00New SUPERVISOR

2:23 PM 8/6/2018



QMatrix

Method Analysis Edit View Standardization Calibration Extras Help

Concentrations

Sample Identification

Quality	Si	Fe	Cu	Mn	Mg	Cr	Ni	Zn	Ti	Cd
%	%	%	%	%	%	%	%	%	%	%
1										
2										
3										
4										
5										
↑										
↓										
σ										
u										
1										
2										
3										
4										
5										
↑										
↓										
σ										
u										

Standardization data of method (Edit)

The Method AI100New was last standardized on 10/10/2016 9:36:48 AM

Channel	Name	Low Sample Expected	Measured	Name	High Sample Expected	Measured	Factor	Offset
Fe3719-u	RA10/9	16391	157003	RA18/92	373219	1722733	0.23	-19390
Mg3829-u	RA10/9	10164	86631	RA18/92	159791	898694	0.18	-5595
Sn3175-u	RA10/9	11676	31302	RA18/92	428492	1221076	0.35	710
Zn4810-u	RA10/9	694	4884	RA18/92	11585	77743	0.15	-36
Cd2288-o	RA10/9	8038	1788	RA19/58	30462	7420	3.98	920
Cr4254-o	RA10/9	3528	32475	RA19/58	55416	524863	0.11	106
Cu3247-o	RA10/9	4309	35610	RA19/58	348253	962313	0.37	-8908
Cu5105-o	RA10/9	9669	82978	RA18/92	400441	3338721	0.12	-291
Fe3719-o	RA10/9	13959	75165	RA19/58	159289	776509	0.21	-1617
Mg3829-o	RA10/9	8867	61149	RA18/92	44164	287634	0.16	-663
Mn2933-o	RA10/9	8051	10909	RA18/92	187942	327059	0.57	1843
Ni3524-o	RA10/9	10060	48311	RA19/58	543435	2993363	0.18	1310
Pb4057-o	RA10/9	11622	78527	RA18/92	170351	1118442	0.15	-364
Si3905-o	RA10/9	2872	20736	RA18/92	150202	1210478	0.12	304
Sn3175-o	RA10/9	9951	28557	RA18/92	117181	388210	0.30	1437
Ti3372-o	RA10/9	11677	50694	RA19/58	813789	3277556	0.25	-1018
Zn4810-o	RA10/9	600	3685	RA19/58	71649	540375	0.13	112
AI2660-u	RA18/92		5446	RA10/9		7198		
AI2660-o	RA18/92		3900	RA10/9		3760		

Print Cancel Close

For Help, press F1

Mask: 0 Measurements: 17064 Instrument: FAILURE

AI100New SUPERVISOR

2:23 PM 8/6/2018

QMatrix

Method Analysis Edit View Standardization Calibration Extras Help

000

Concentrations

Sample Identification

	Quality	Fe	Cu	Mn	Mg	Cr	Ni	Zn	Ti	Cd
	%	%	%	%	%	%	%	%	%	%
1										
2										
3										
4										
5										
↑										
∅										
↓										
σ										
∪										

	Pb	Sn
	%	%
1		
2		
3		
4		
5		
↑		
∅		
↓		
σ		
∪		

Alarmsystem

Software Exception: [QEXG\_SOCKET] Timeout while connecting to host: IP [192.168.10.50] Port [1500] Code: 0!

CQSocket::Connect()  
CQDLClient::ConnectAndSend  
CQDLClient::DoTransfer( C\_QDL\_GIVE\_QSOURCE\_VERSION, CQDLMessage\* )  
CQIC\_SubSys::DoQDLTransfer()  
CQIC\_SubSys\_Source::GiveQSourceVersion()  
CQIControl::Init()  
CQIC\_Shell::Open()  
CQIC\_Shell::OpenThreadFunction()  
CNewLabView::OnMsgWM\_QIC\_OPENED\_BY\_THREAD(1)

Errorcode

Decimal: 0

Hex: 0

Hex: 8/6/2018

2:25:05 PM

OK

Retry

Ignore

Cancel

For Help, press F1

Mask: 0 Measurements: 17064 Instrument: INITIALIZING

Method SUPERVISOR

2:25 PM  
8/6/2018

For Help, press F1 Mask: 0 Measurements: 17064 Instrument: FAILURE AIT00New SUPERVISOR 2:25 PM 8/5/2018

QMatrix

Method Analysis Edit View Standardization Calibration Extras Help

Concentrations

Sample Identification										
Quality	Si	Fe	Cu	Mn	Mg	Cr	Ni	Zn	Ti	Cd
%	%	%	%	%	%	%	%	%	%	%
1										
2										
3										
4										
5										
↑										
∅										
↓										
σ										
∪										
Pb	Sn	Al								
%	%	%								
1										
2										
3										
4										
5										
↑										
∅										
↓										
σ										
∪										

List of typstandardisation samples

Samplename	last measured
KB 380 CH	10/12/2016 10:45:21 AM
KC-413 Y	10/10/2016 9:49:15 AM
SS 360 BC	10/10/2016 9:54:15 AM
SS-390 BD	10/12/2016 10:47:40 AM

Close

Edit

New

Delete

For Help, press F1

Mask: 0 Measurements: 17064 Instrument: FAILURE

Alt00New SUPERVISOR

2:23 PM 8/6/2018

QMatrix

Method Analysis Edit View Standardization Calibration Extras Help

Concentrations

Sample Identification										
Quality	Si	Fe	Cu	Mn	Mg	Cr	Ni	Zn	Ti	Cd
%	%	%	%	%	%	%	%	%	%	%
1										
2										
3										
4										
5										
↑										
∅										
↓										
σ										
∪										
1										
2										
3										
4										
5										
↑										
∅										
↓										
σ										
∪										
1										
2										
3										
4										
5										
↑										
∅										
↓										
σ										
∪										
1										
2										
3										
4										
5										
↑										
∅										
↓										
σ										
∪										
1										
2										
3										
4										
5										
↑										
∅										
↓										
σ										
∪										
1										
2										
3										
4										
5										
↑										
∅										
↓										
σ										
∪										
1										
2										
3										
4										
5										
↑										
∅										
↓										
σ										
∪										
1										
2										
3										
4										
5										
↑										
∅										
↓										
σ										
∪										
1										
2										
3										
4										
5										
↑										
∅										
↓										
σ										
∪										
1										
2										
3										
4										
5										
↑										
∅										
↓										
σ										
∪										
1										
2										
3										
4										
5										
↑										
∅										
↓										
σ										
∪										
1										
2										
3										
4										
5										
↑										
∅										
↓										
σ										
∪										
1										
2										
3										
4										
5										
↑										
∅										
↓										
σ										
∪										
1										
2										
3										
4										
5										
↑										
∅										
↓										
σ										
∪										
1										
2										
3										
4										
5										
↑										
∅										
↓										
σ										
∪										
1										
2										
3										
4										
5										
↑										
∅										
↓										
σ										
∪										
1										
2										
3										
4										
5										
↑										
∅										
↓										
σ										
∪										
1										
2										
3										
4										
5										
↑										
∅										
↓										
σ										
∪										
1										
2										
3										
4										
5										
↑										
∅										
↓										
σ										
∪										
1										
2										
3										
4										
5										
↑										
∅										
↓										
σ										
∪										
1										
2										
3										
4										
5										
↑										
∅										
↓										
σ										
∪										
1										
2										
3										
4										
5										
↑										
∅										
↓										
σ										
∪										
1										
2										
3										
4										
5										
↑										
∅										
↓										
σ										
∪										
1										
2										
3										
4										
5										
↑										
∅										
↓										
σ										
∪										
1										
2										
3										

QMatrix

Method Analysis Edit View Standardization Calibration Extras Help

Concentrations

Sample Identification

Quality	Si	Fe	Cu	Mn	Mg	Cr	Ni	Zn	Ti	Cd
%	%	%	%	%	%	%	%	%	%	%
1										
2										
3										
4										
5										
↑										
∅										
↓										
σ										
u										
↑										
∅										
↓										
σ										
u										

Set expected values

Channels

Channel	Low sample	High sample		
Exp. value	Std.Dev.	Exp. value	Std.Dev.	
Fe3719-u	16391	1	373219	1
Mg3829-u	10164	1	159791	1
Sn3175-u	11676	1	428492	2
Zn4810-u	694	10	11585	1
Cd2288-o	8038	1	30462	0
Cr4254-o	3528	2	55416	2
Cu3247-o	4309	12	348253	1
Cu5105-o	9669	2	400441	1
Fe3719-o	13959	1	159289	1
Mg3829-o	8867	2	44164	2
Mn2933-o	8051	1	187942	0
Ni3524-o	10060	2	543435	1
Pb4057-o	11622	2	170351	1
Si3905-o	2872	2	150202	1
Sn3175-o	9951	2	117181	1
Ti3372-o	11677	1	819789	1
Zn4810-o	600	3	71649	3

Low sample

RA10/9	Meas. value	Include
1/17/2011 2:49:33	16522	<input checked="" type="checkbox"/>
1/17/2011 9:37:27	16260	<input checked="" type="checkbox"/>

Expected value: 16391  
Std.Dev. [%]: 1  
Measured value: 16260

Apply value to channel parameters

High sample

RA18/92	Meas. value	Include
1/17/2011 2:27:47	370854	<input checked="" type="checkbox"/>
1/17/2011 9:40:27	375583	<input checked="" type="checkbox"/>

Expected value: 373219  
Std.Dev. [%]: 1  
Measured value: 375583

Apply value to channel parameters

Factor/Offset

Current setting	Factor	Offset
After 'Apply value to channel parameters'	0.99	243.69

Close

For Help, press F1

Mask: 0 Measurements: 17064 Instrument: FAILURE

Alt00New SUPERVISOR

2:24 PM 8/6/2018